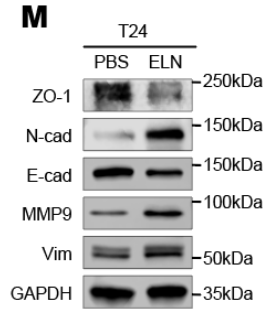


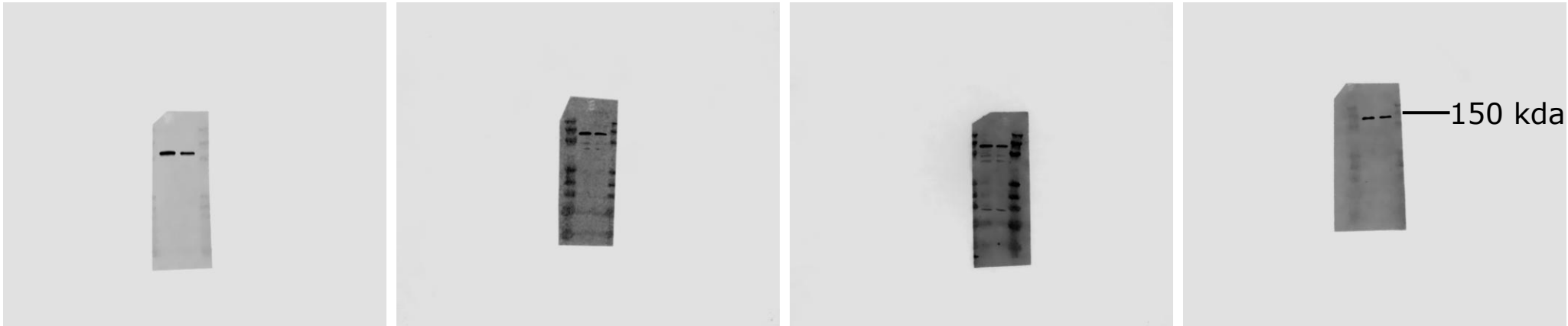
# Figure 2, M

The Image captured by the LICOR instrument processed using Image Studio Ver 5.2.

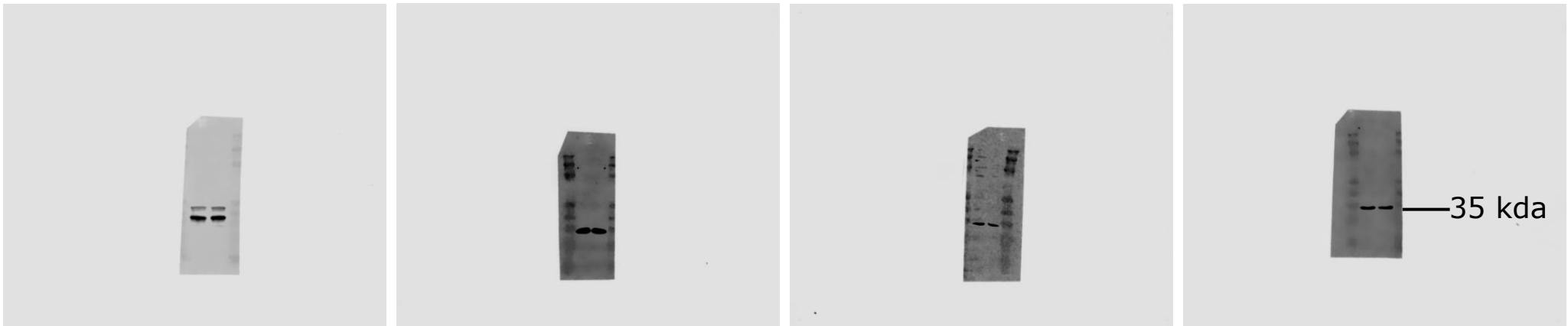
Uncropped/unedited images ↓



E-cadherin

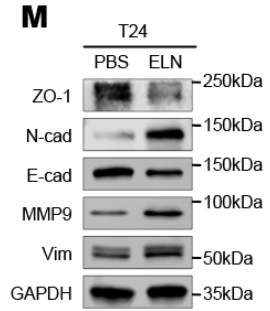


GAPDH



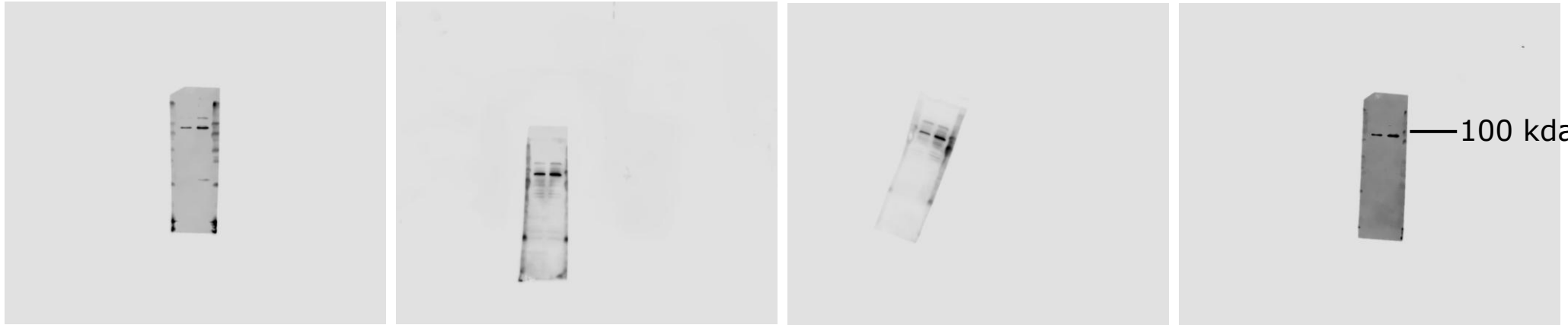
# Figure 2, M

The Image captured by the LICOR instrument processed using Image Studio Ver 5.2.



Uncropped/unedited images ↓

MMP9

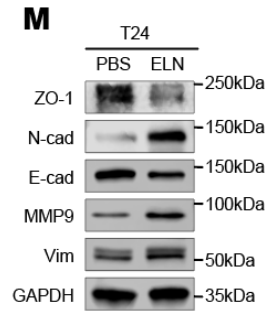


GAPDH

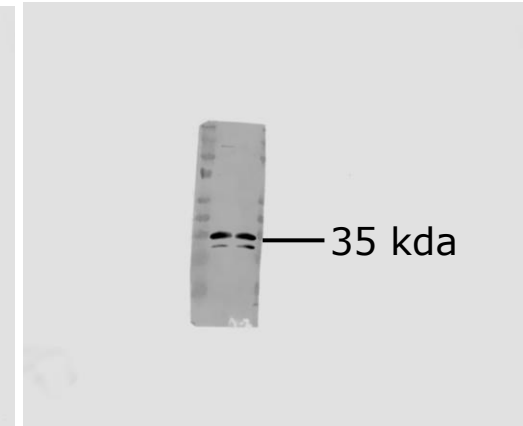
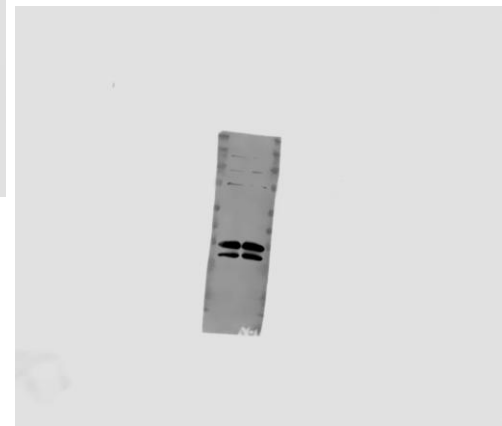
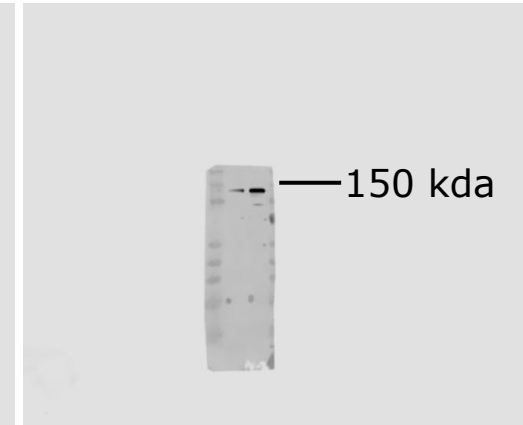
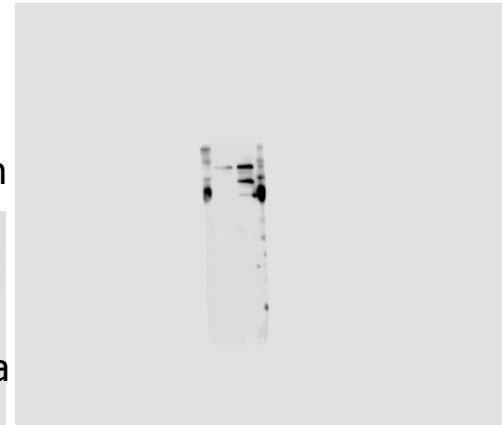
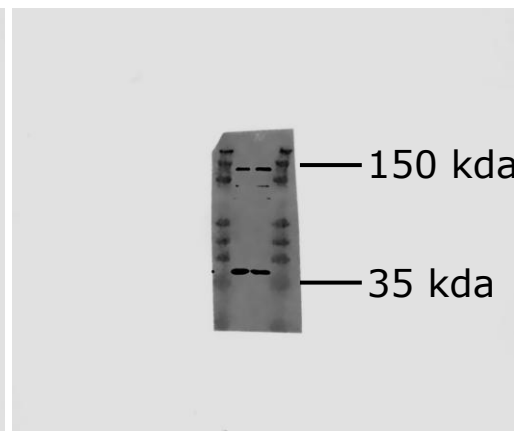
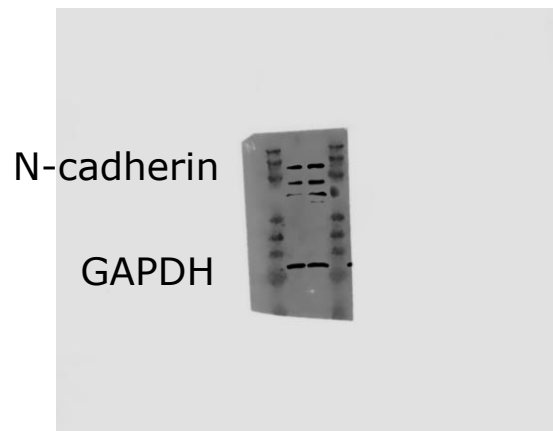


# Figure 2, M

The Image captured by the LICOR instrument processed using Image Studio Ver 5.2.

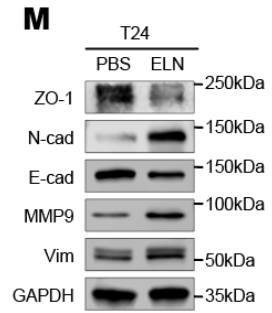


Uncropped/unedited images ↓



# Figure 2, M

The Image captured by the LICOR instrument processed using Image Studio Ver 5.2.



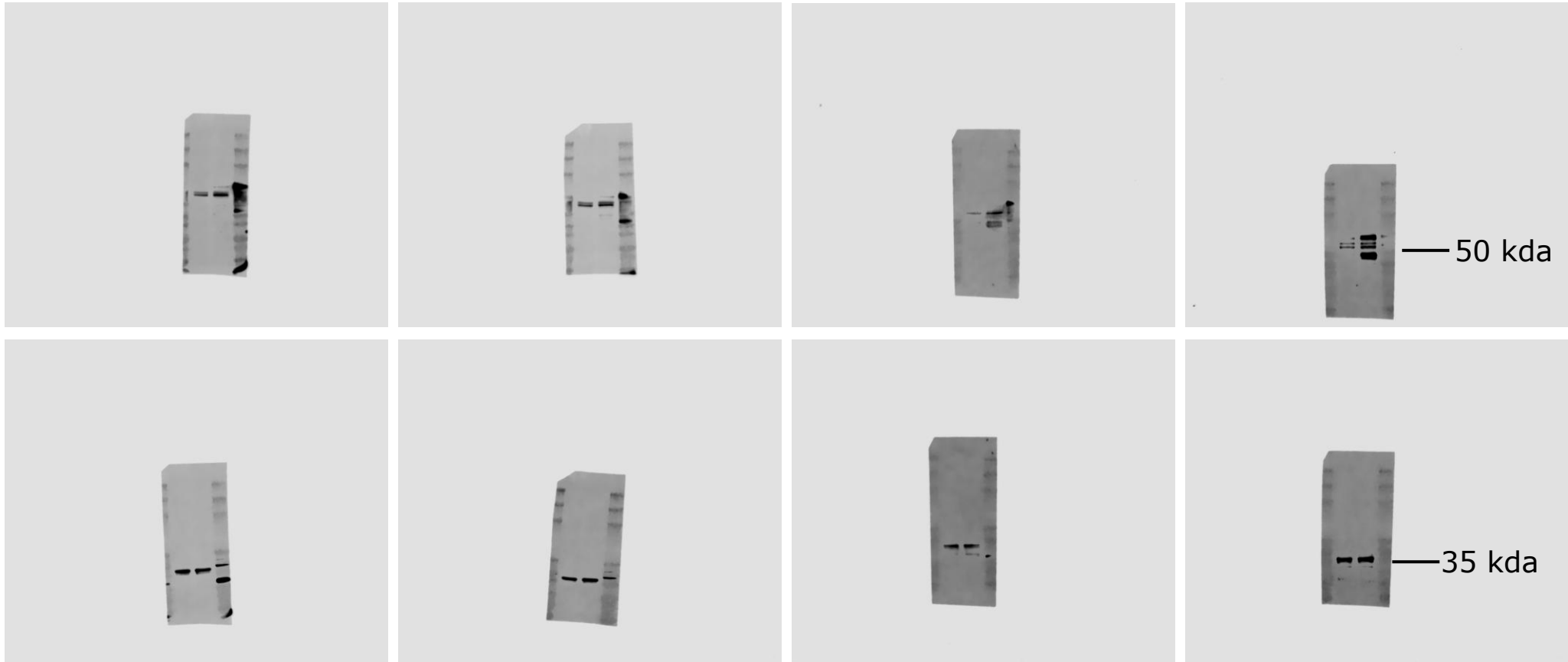
Uncropped/unedited images ↓

Vim

50 kda

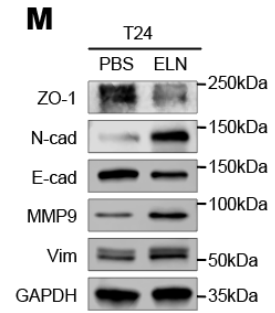
GAPDH

35 kda

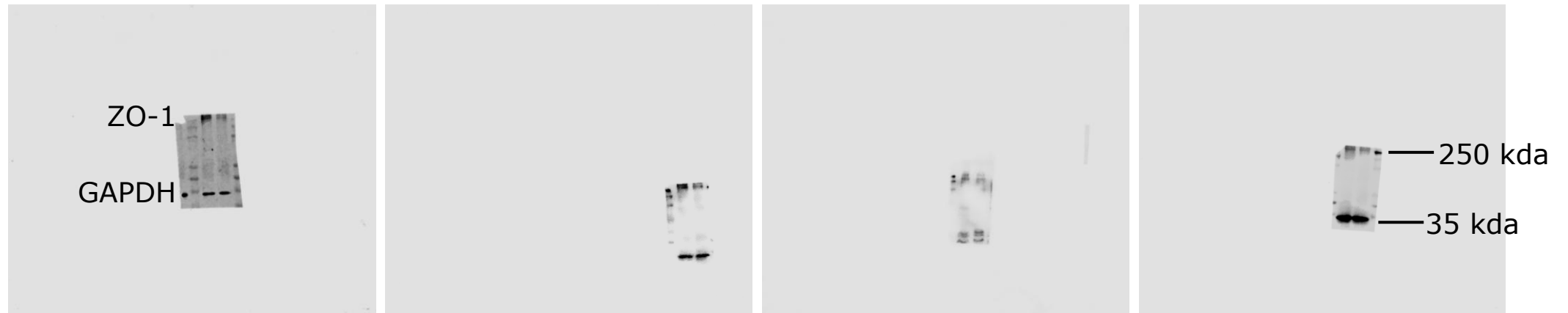


# Figure 2, M

The Image captured by the LICOR instrument processed using Image Studio Ver 5.2.

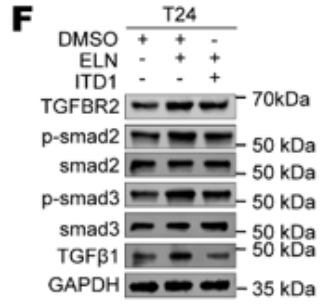


Uncropped/unedited images ↓



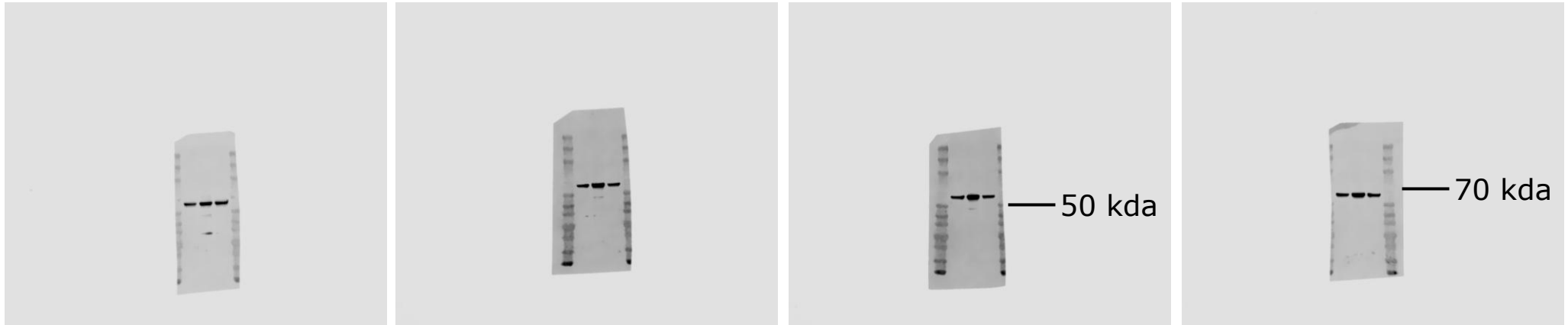
# Figure 5, F

The Image captured by the LICOR instrument processed using Image Studio Ver 5.2.

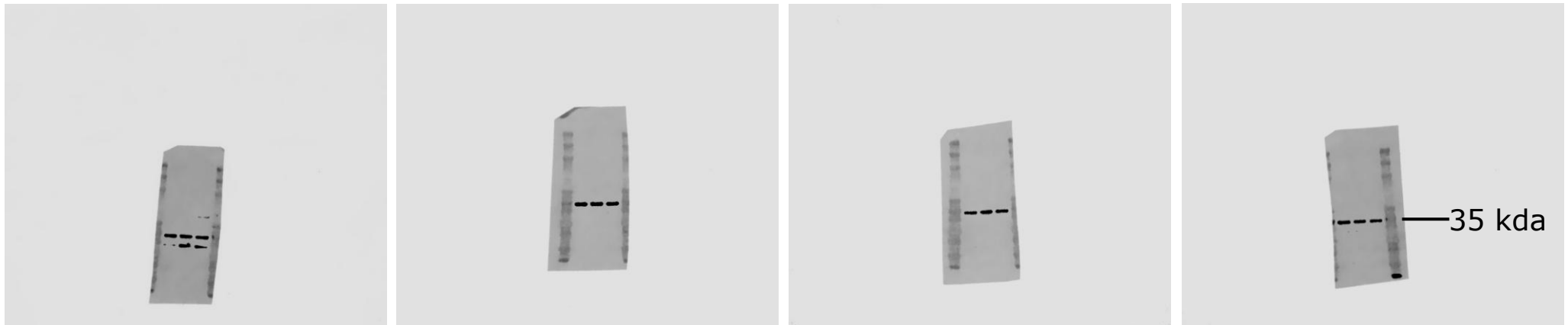


Uncropped/unedited images ↓

TGFBR2

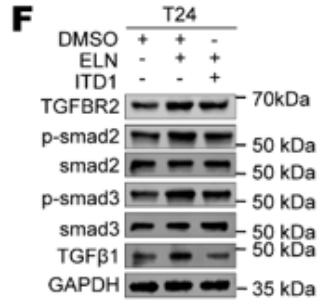


GAPDH



# Figure 5, F

The Image captured by the LICOR instrument processed using Image Studio Ver 5.2.



Uncropped/unedited images ↓

P-smad2

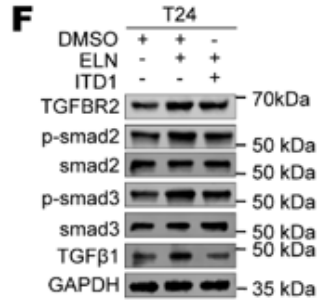


GAPDH



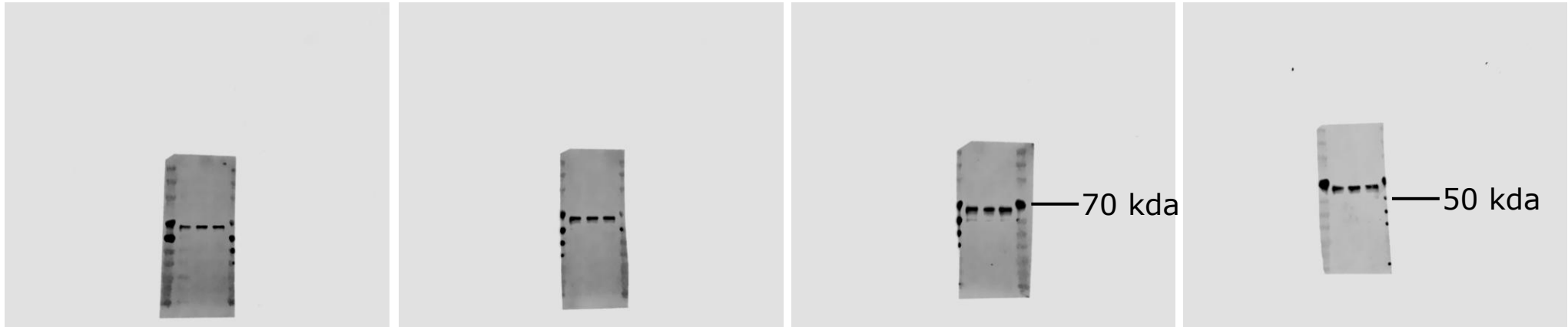
# Figure 5, F

The Image captured by the LICOR instrument processed using Image Studio Ver 5.2.

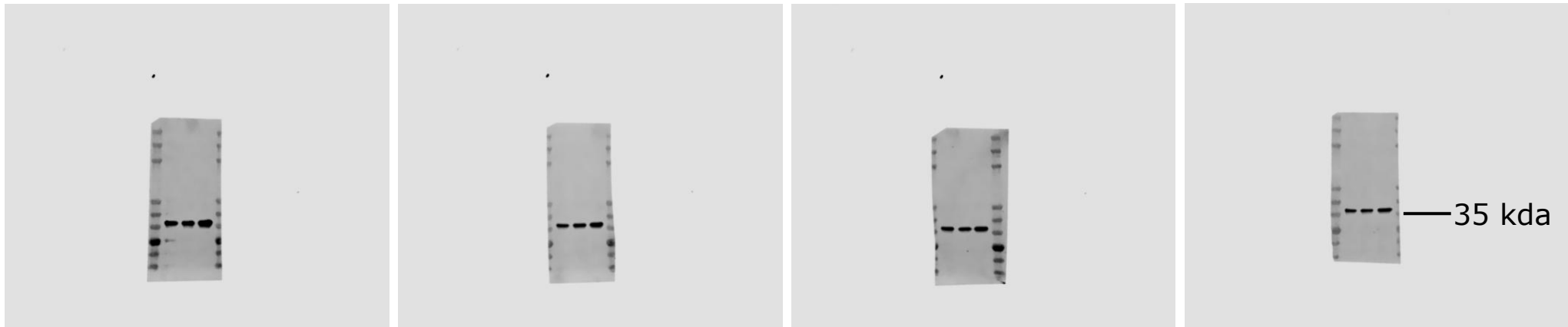


Uncropped/unedited images ↓

smad2

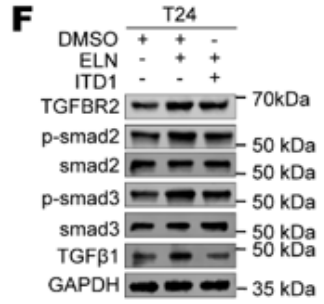


GAPDH



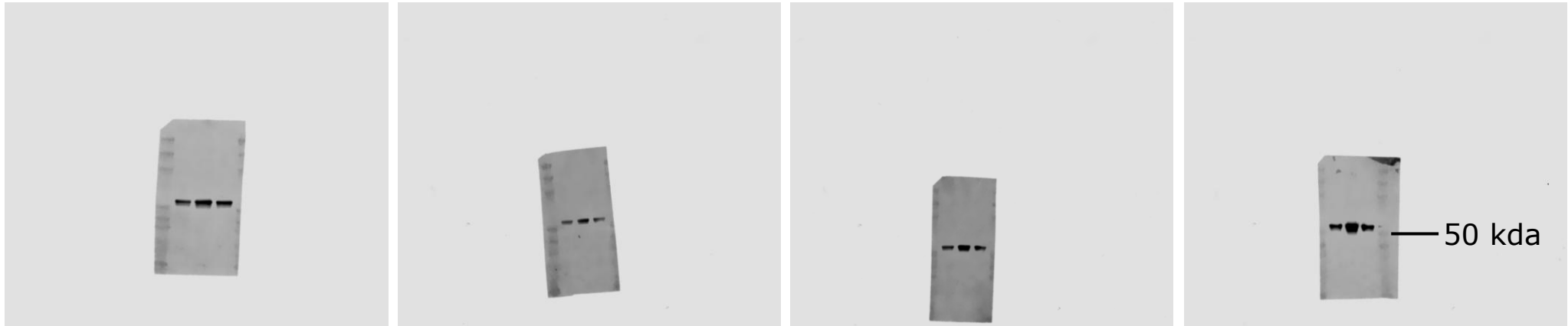
# Figure 5, F

The Image captured by the LICOR instrument processed using Image Studio Ver 5.2.

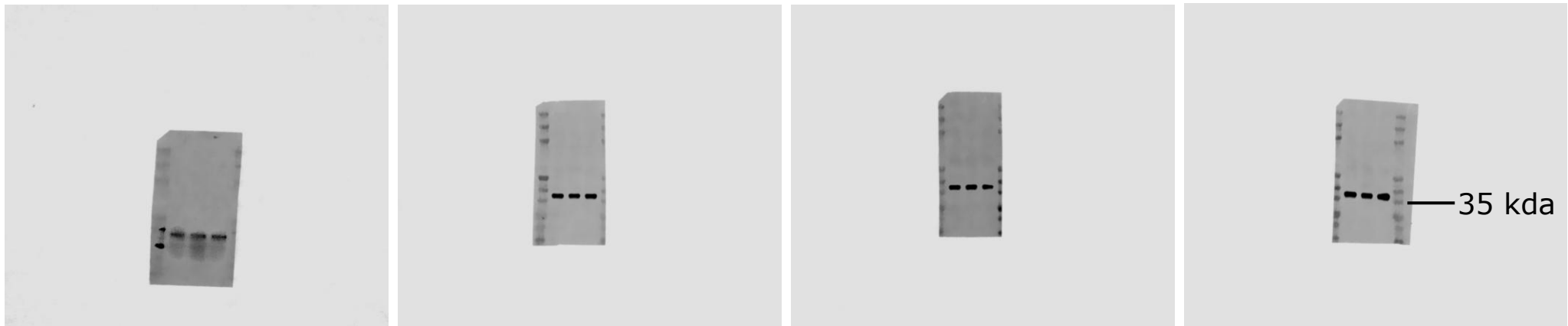


Uncropped/unedited images↓

P-smad3

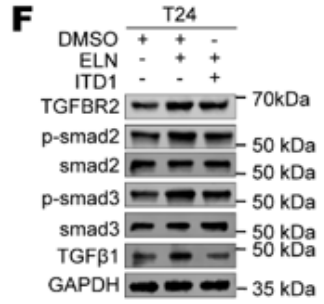


GAPDH



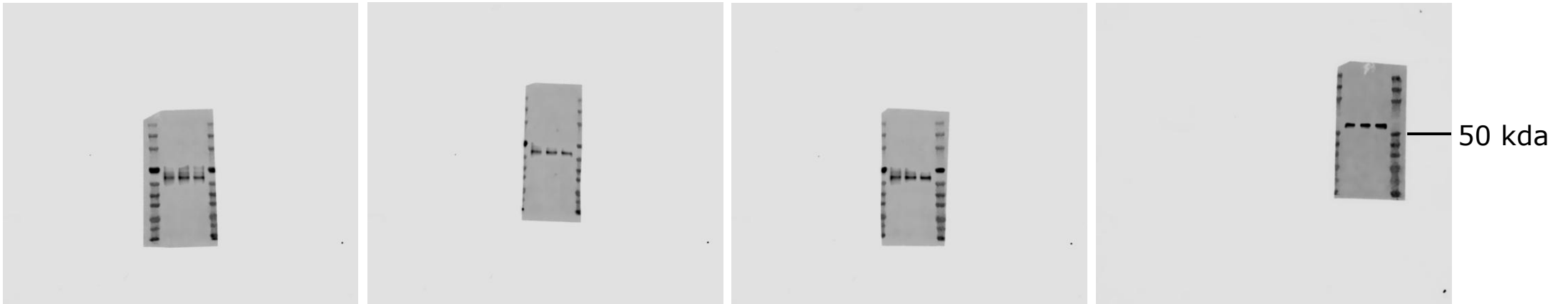
# Figure 5, F

The Image captured by the LICOR instrument processed using Image Studio Ver 5.2.

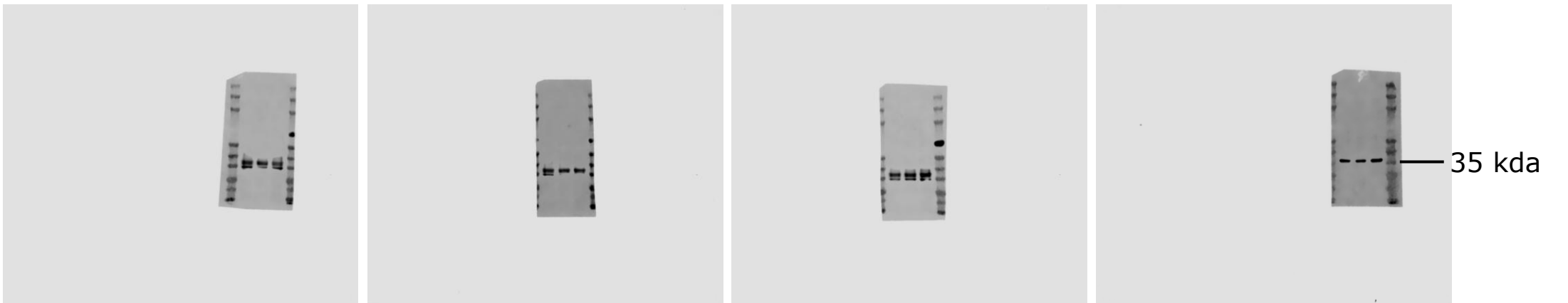


Uncropped/unedited images ↓

smad3

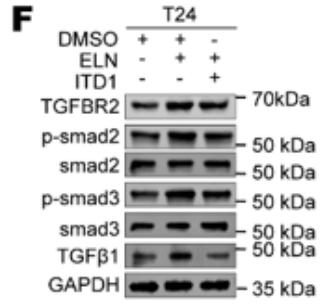


GAPDH



# Figure 5, F

The Image captured by the LICOR instrument processed using Image Studio Ver 5.2.



Uncropped/unedited images↓

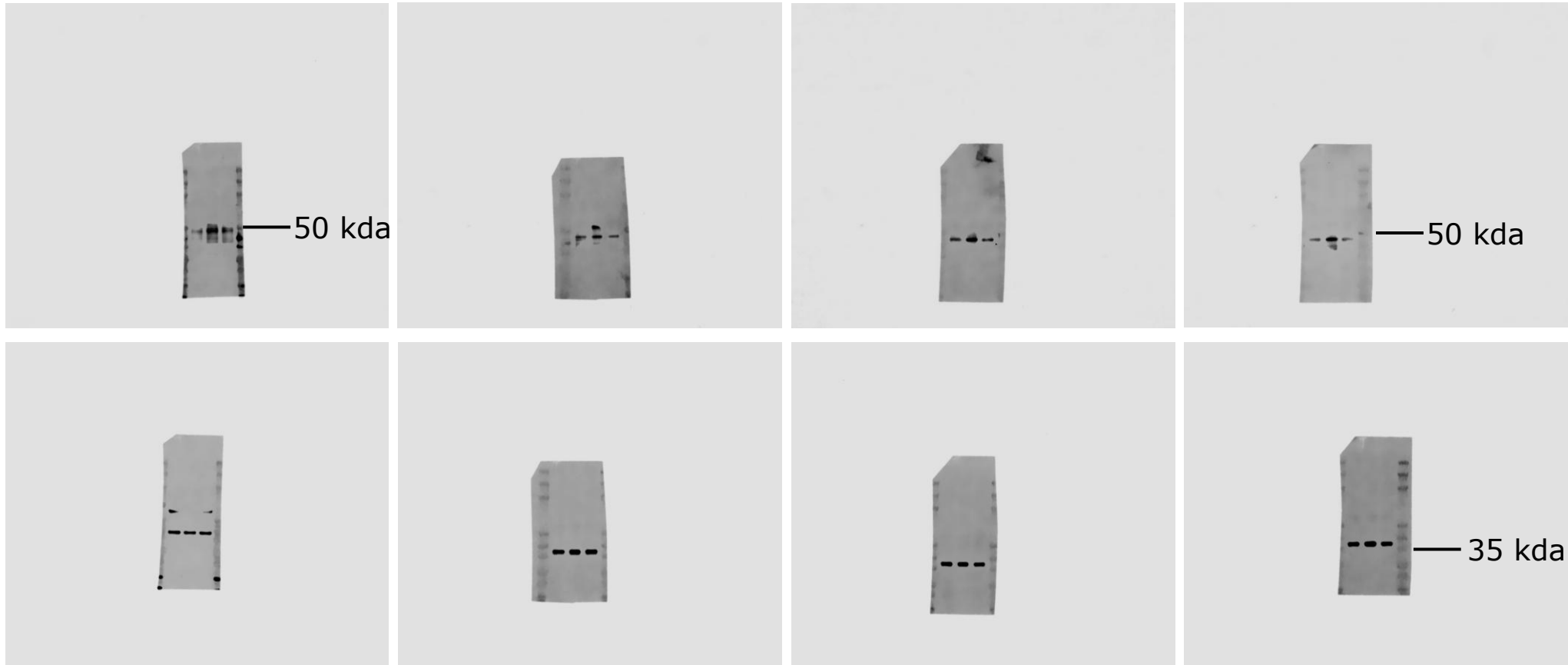
TGFβ1

50 kda

50 kda

GAPDH

35 kda



# Figure 5, J

The Image captured by the LICOR instrument processed using Image Studio Ver 5.2.

Uncropped/unedited images↓

	T cell		
DMSO	+	+	-
ELN	-	+	+
ITD1	-	-	+

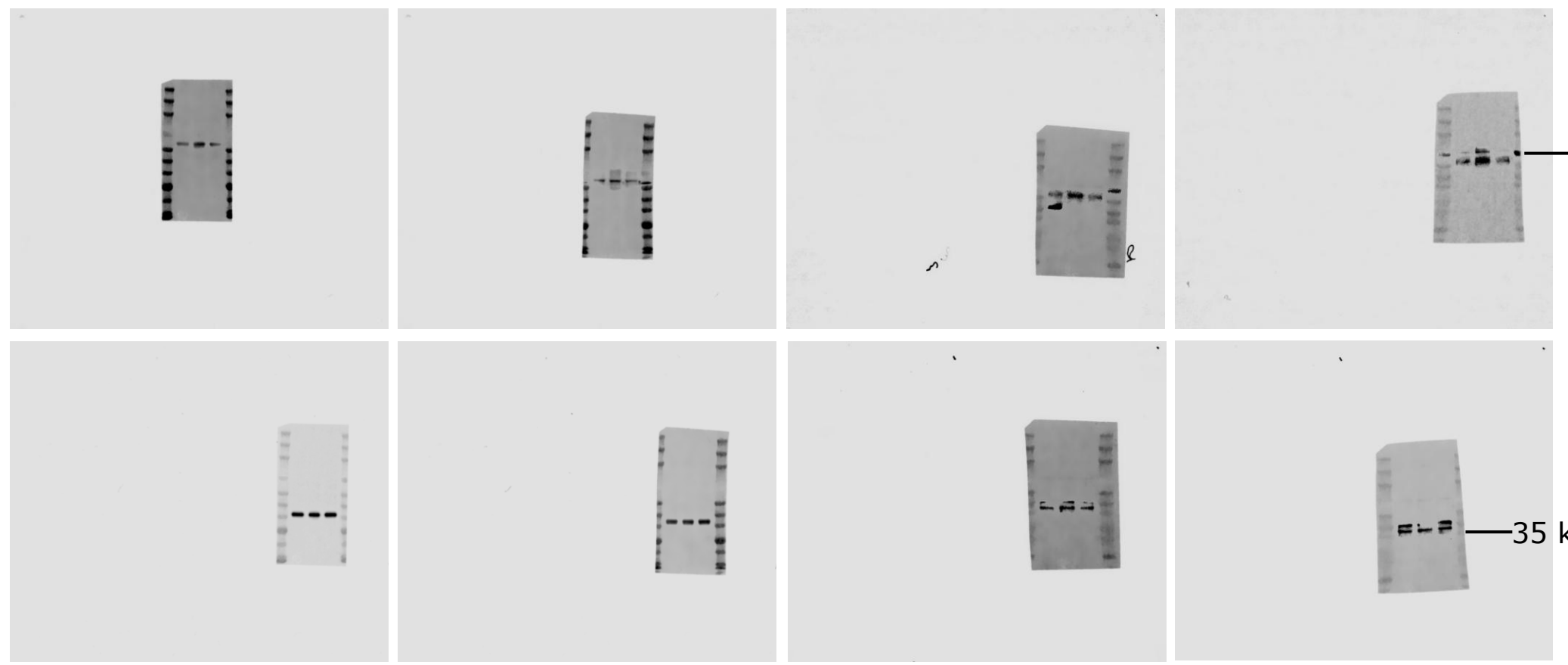
TGFBR2				70kDa
p-smad2				50 kDa
smad2				50 kDa
p-smad3				50 kDa
smad3				50 kDa
TGFβ1				50 kDa
GAPDH				35 kDa

TGFBR2

70 kda

GAPDH

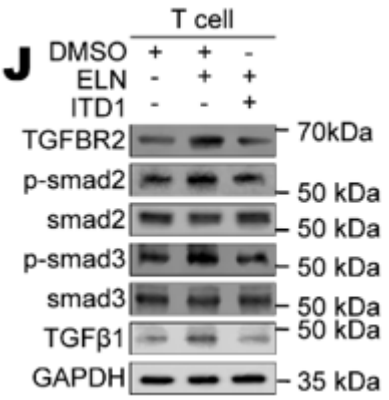
35 kda



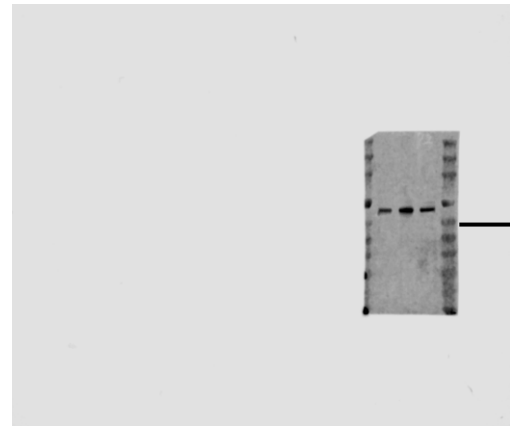
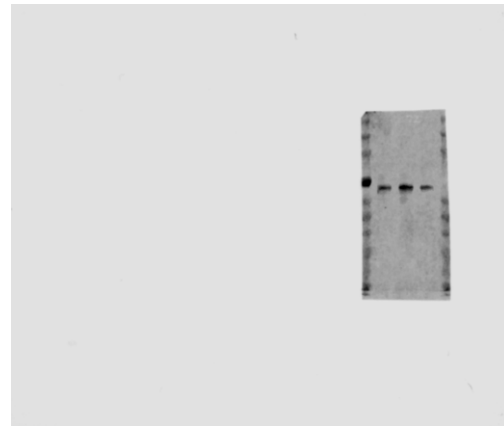
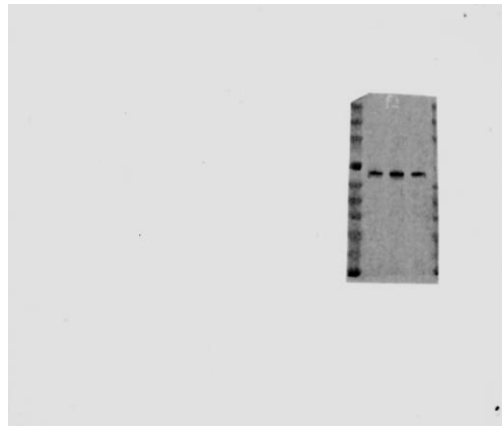
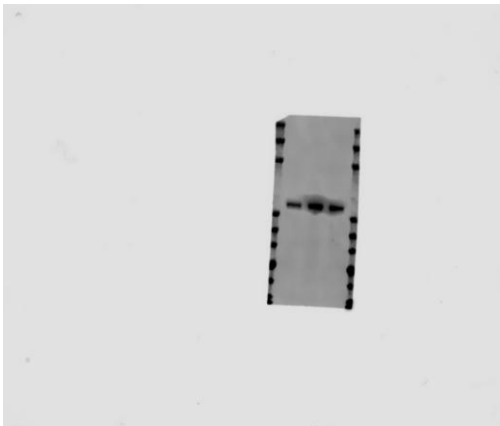
**Figure 5, J**

The Image captured by the LICOR instrument processed using Image Studio Ver 5.2.

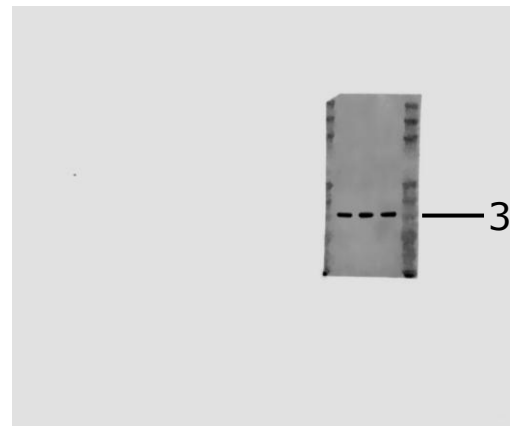
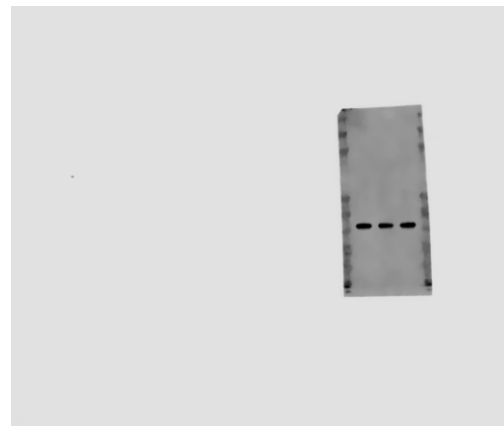
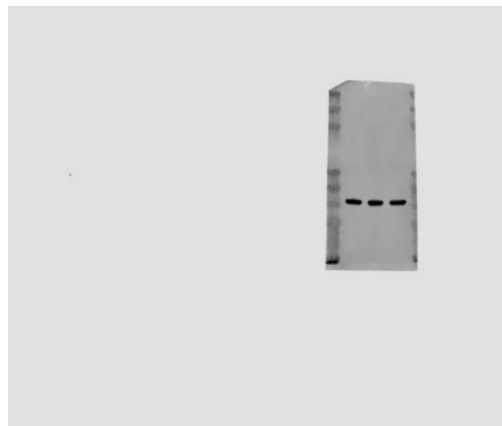
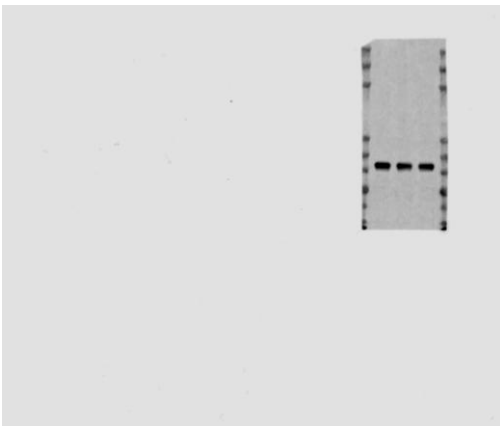
Uncropped/unedited images↓



P-smad2



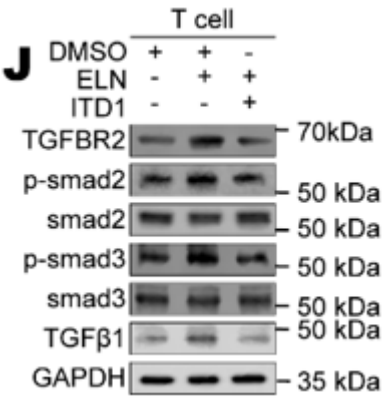
GAPDH



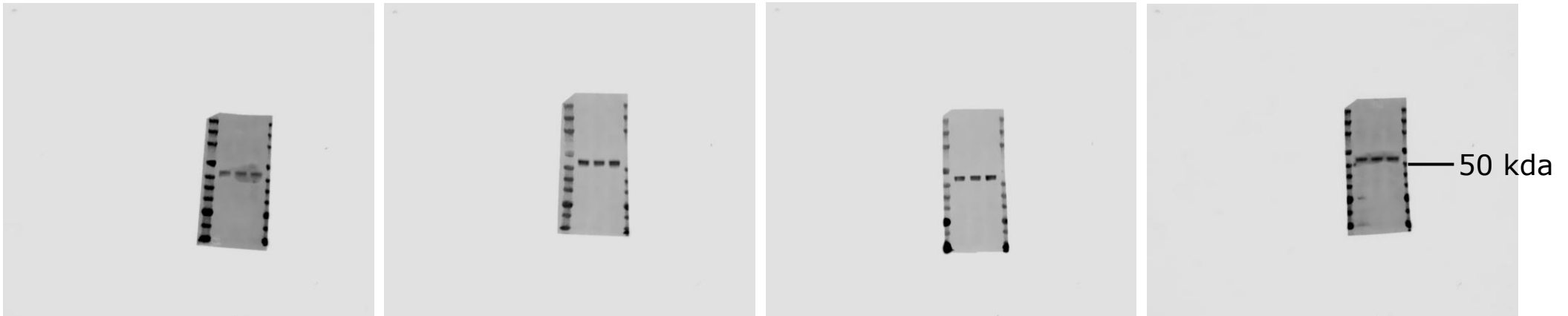
**Figure 5, J**

The Image captured by the LICOR instrument processed using Image Studio Ver 5.2.

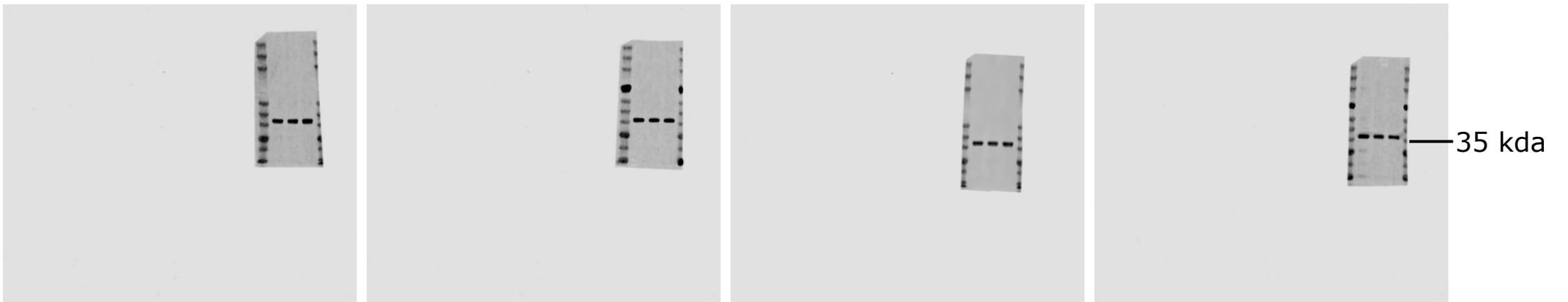
Uncropped/unedited images↓



smad2



GAPDH



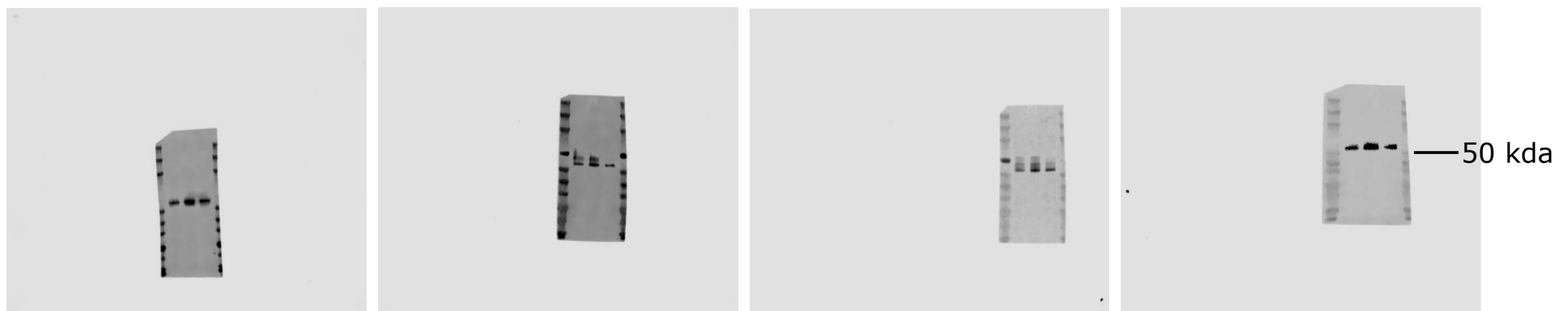
# Figure 5, J

The Image captured by the LICOR instrument processed using Image Studio Ver 5.2.

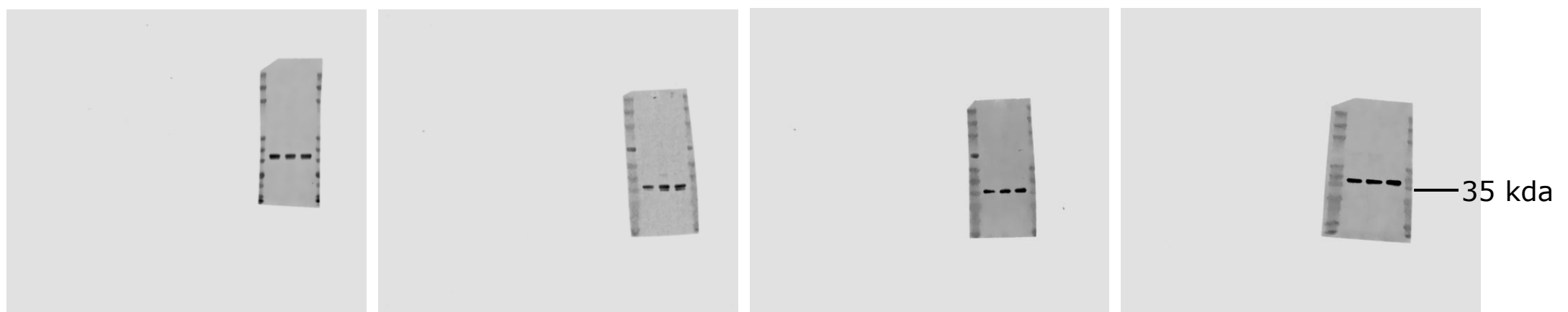
Uncropped/unedited images ↓

	T cell			
DMSO	+	+	-	
ELN	-	+	+	
ITD1	-	-	+	
TGFBR2				70kDa
p-smad2				50 kDa
smad2				50 kDa
p-smad3				50 kDa
smad3				50 kDa
TGFβ1				50 kDa
GAPDH				35 kDa

P-smad3



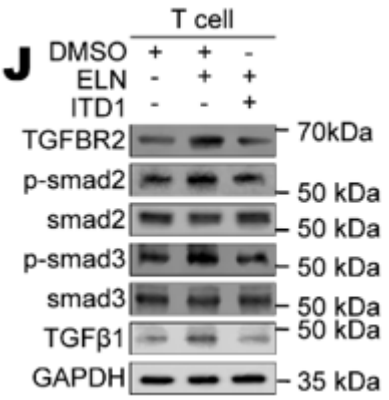
GAPDH



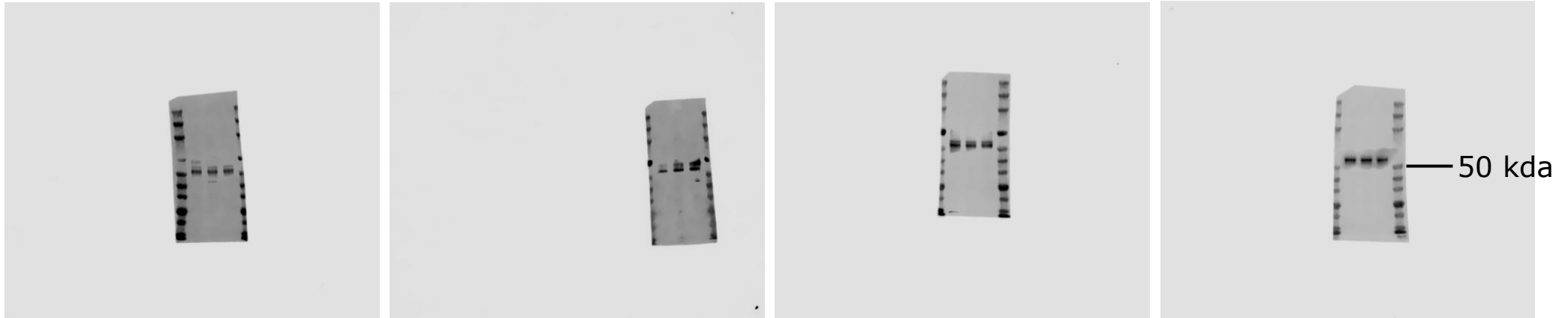
**Figure 5, J**

The Image captured by the LICOR instrument processed using Image Studio Ver 5.2.

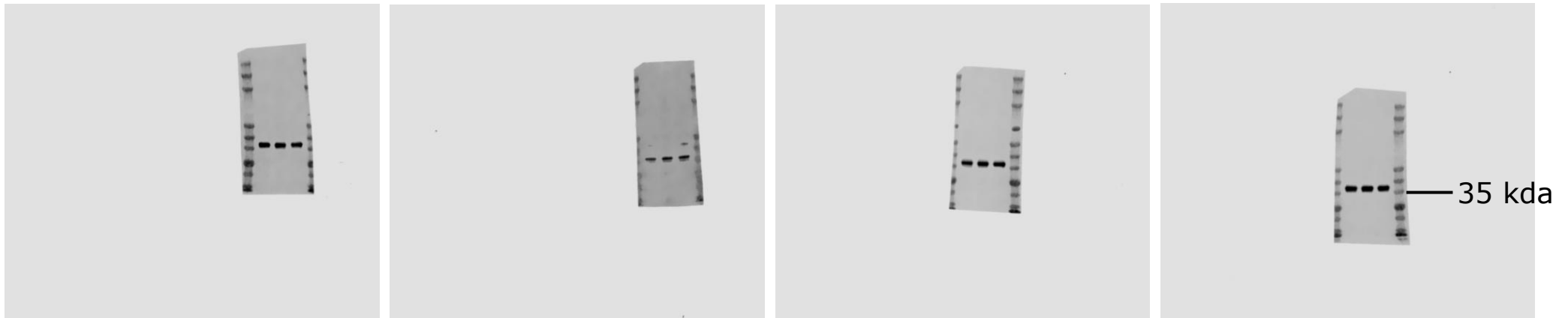
Uncropped/unedited images↓



smad3



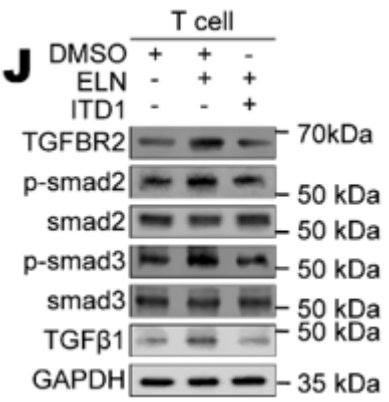
GAPDH



**Figure 5, J**

The Image captured by the LICOR instrument processed using Image Studio Ver 5.2.

Uncropped/unedited images↓

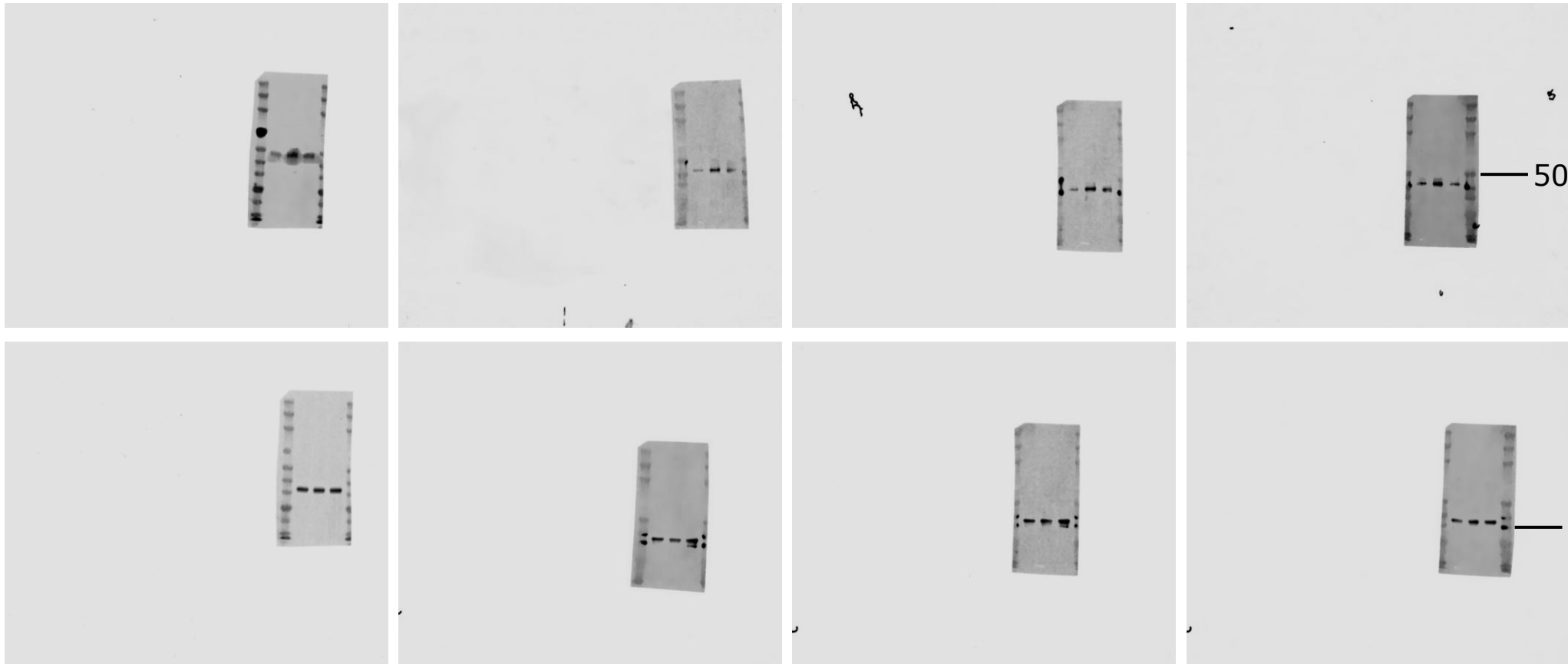


TGFβ1

50 kda

GAPDH

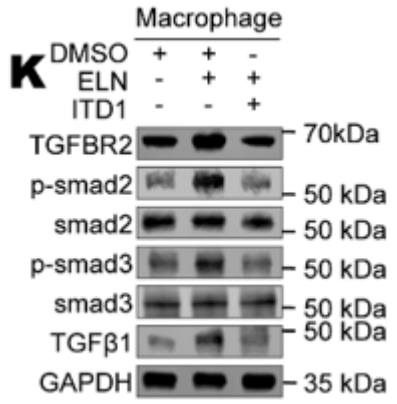
35 kda



**Figure 5, K**

The Image captured by the LICOR instrument processed using Image Studio Ver 5.2.

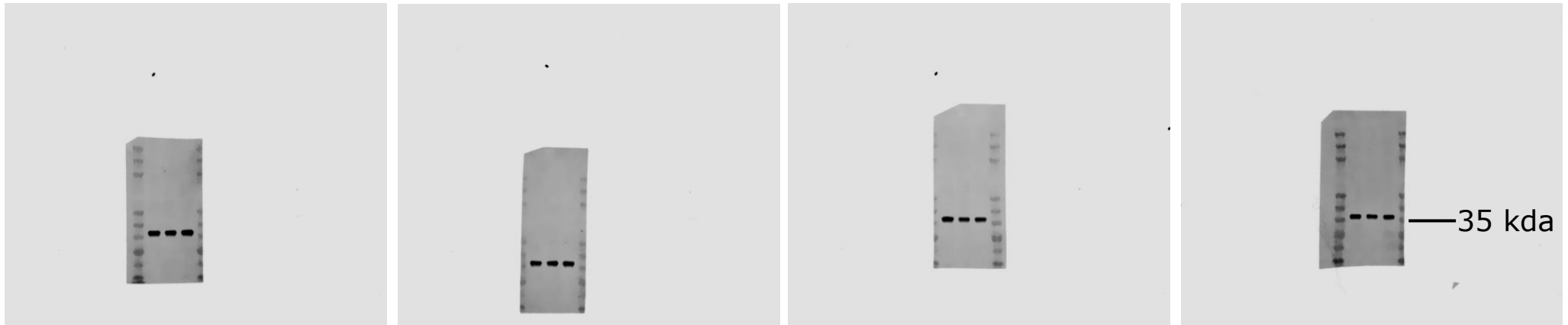
Uncropped/unedited images↓



TGFBR2



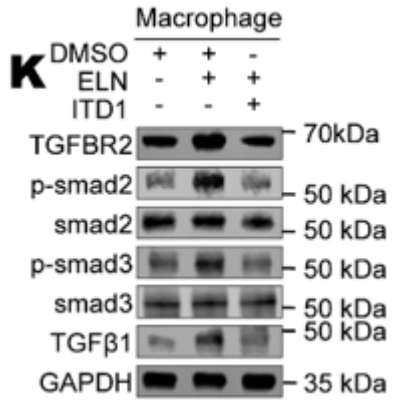
GAPDH



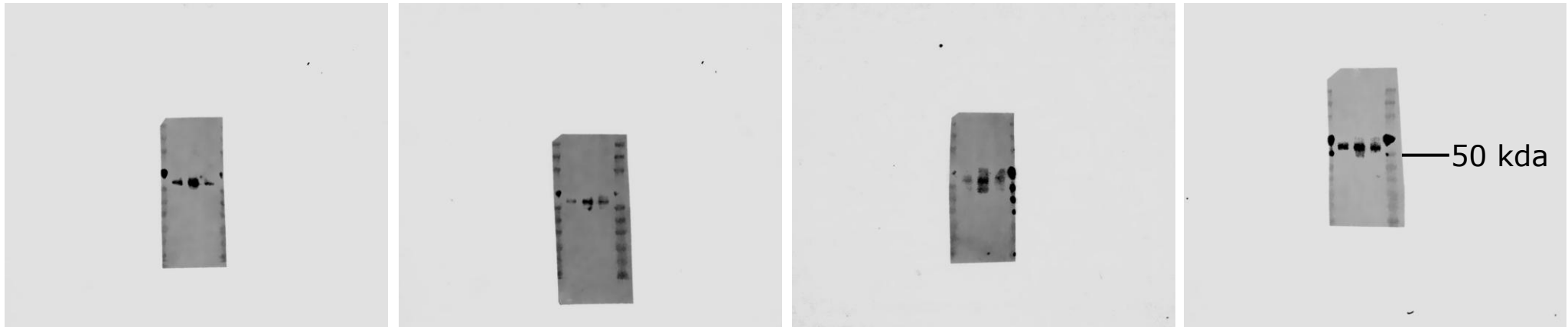
**Figure 5, K**

The Image captured by the LICOR instrument processed using Image Studio Ver 5.2.

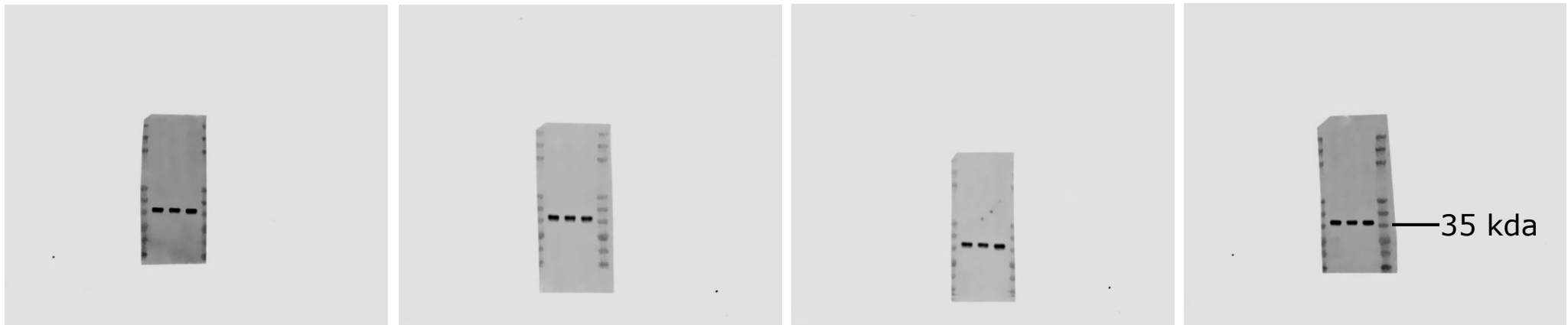
Uncropped/unedited images↓



P-smad2



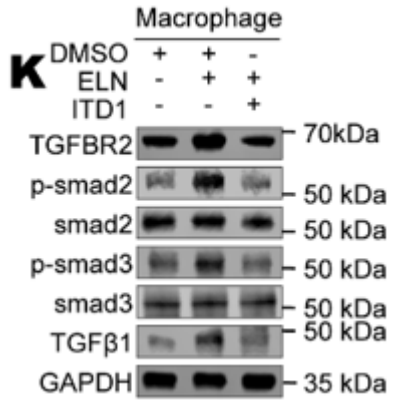
GAPDH



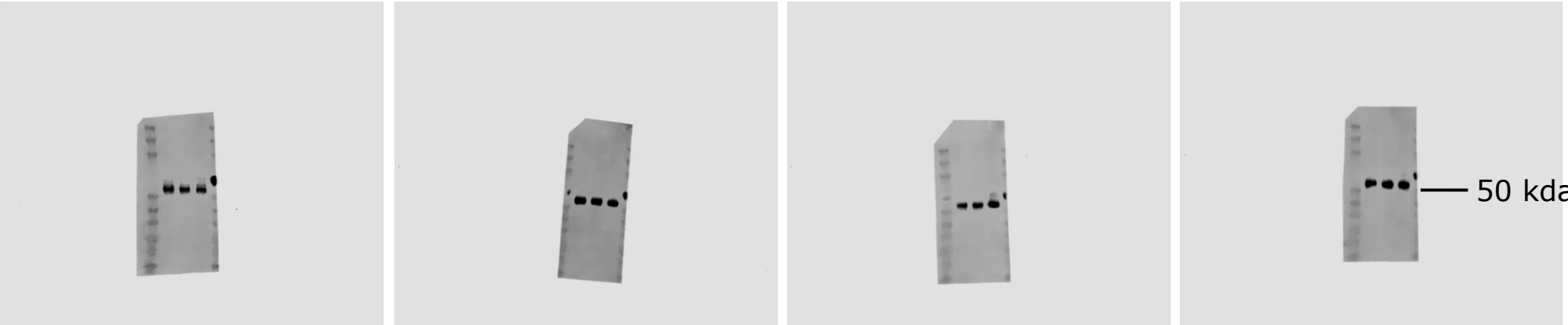
**Figure 5, K**

The Image captured by the LICOR instrument processed using Image Studio Ver 5.2.

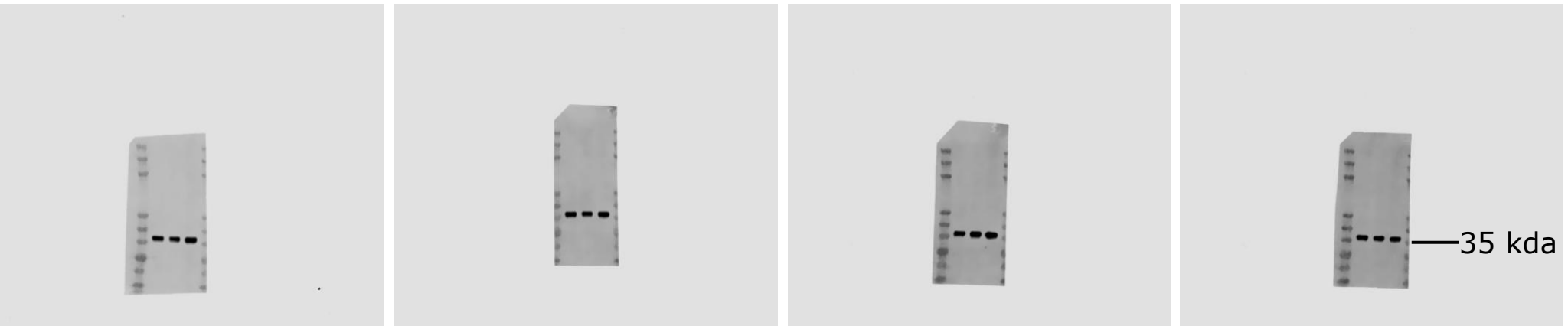
Uncropped/unedited images↓



smad2



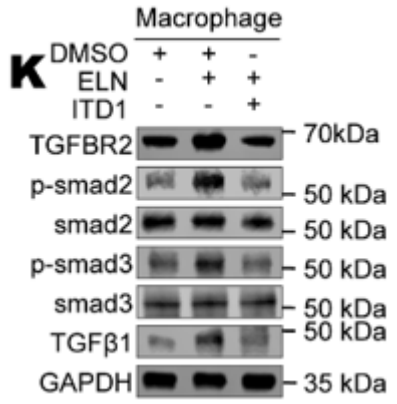
GAPDH



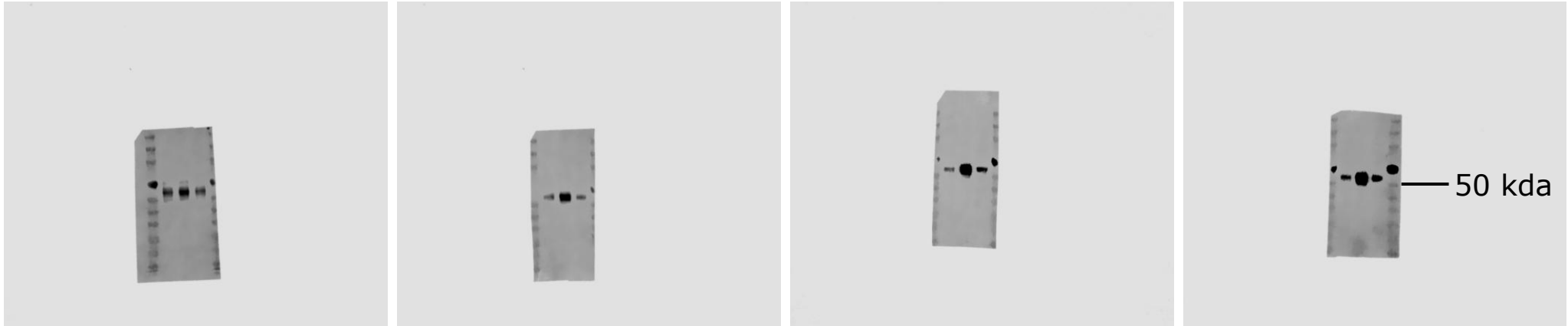
**Figure 5, K**

The Image captured by the LICOR instrument processed using Image Studio Ver 5.2.

Uncropped/unedited images↓

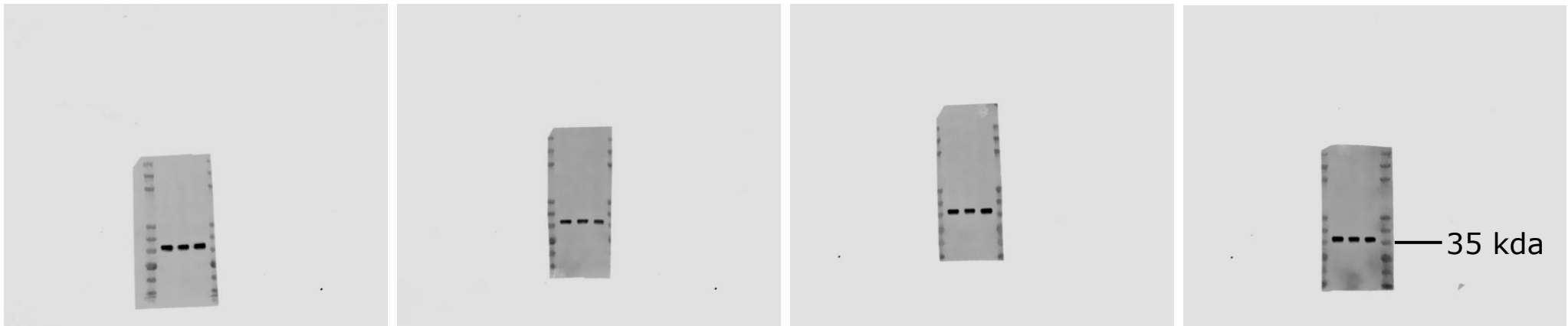


P-smad3



50 kda

GAPDH

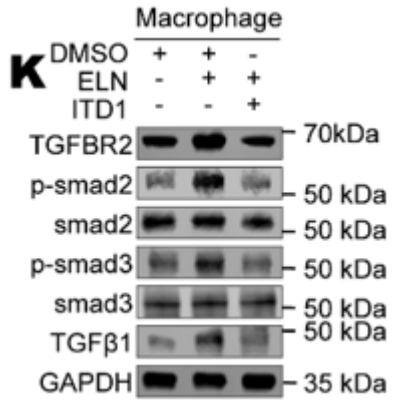


35 kda

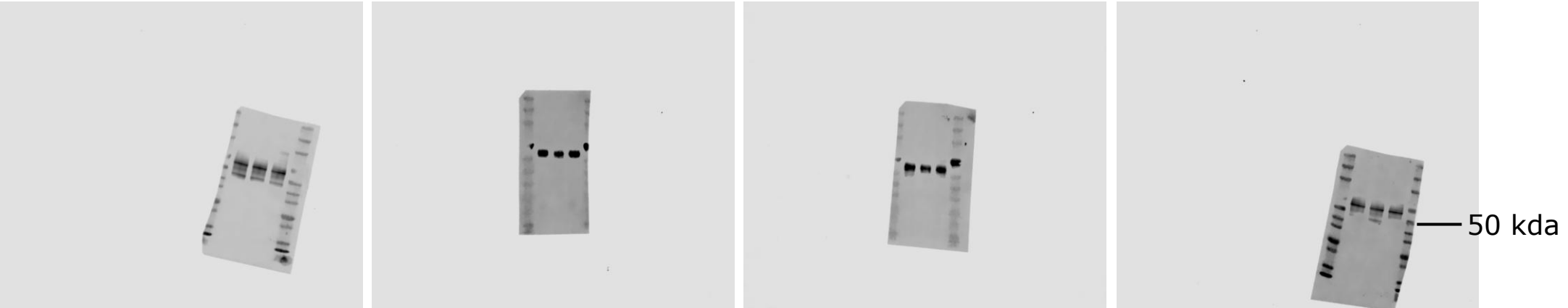
# Figure 5, K

The Image captured by the LICOR instrument processed using Image Studio Ver 5.2.

Uncropped/unedited images↓



smad3



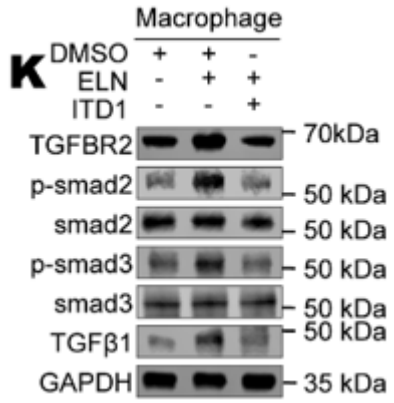
GAPDH



**Figure 5, K**

The Image captured by the LICOR instrument processed using Image Studio Ver 5.2.

Uncropped/unedited images↓

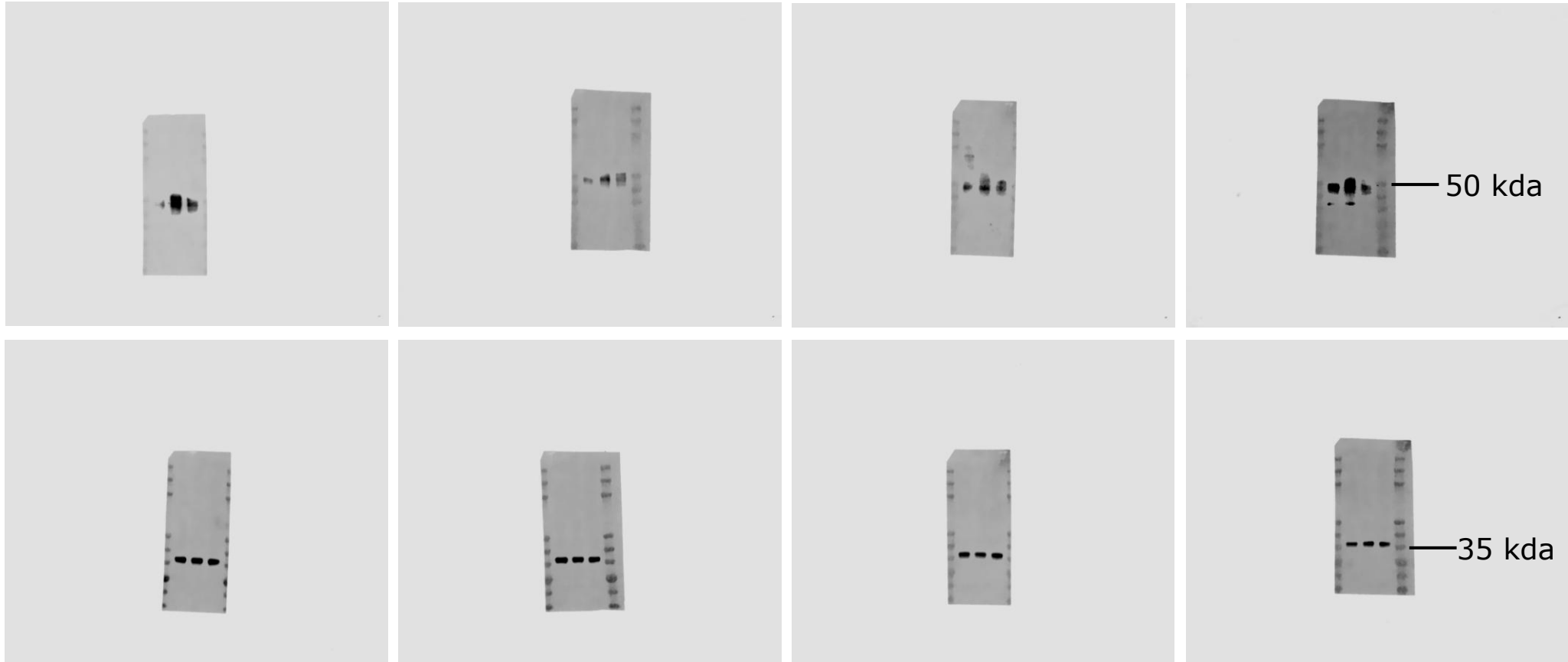


TGFβ1

50 kda

GAPDH

35 kda



# Figure S6, D

The Image captured by the LICOR instrument processed using Image Studio Ver 5.2.

**D**

Uncropped/unedited images↓

