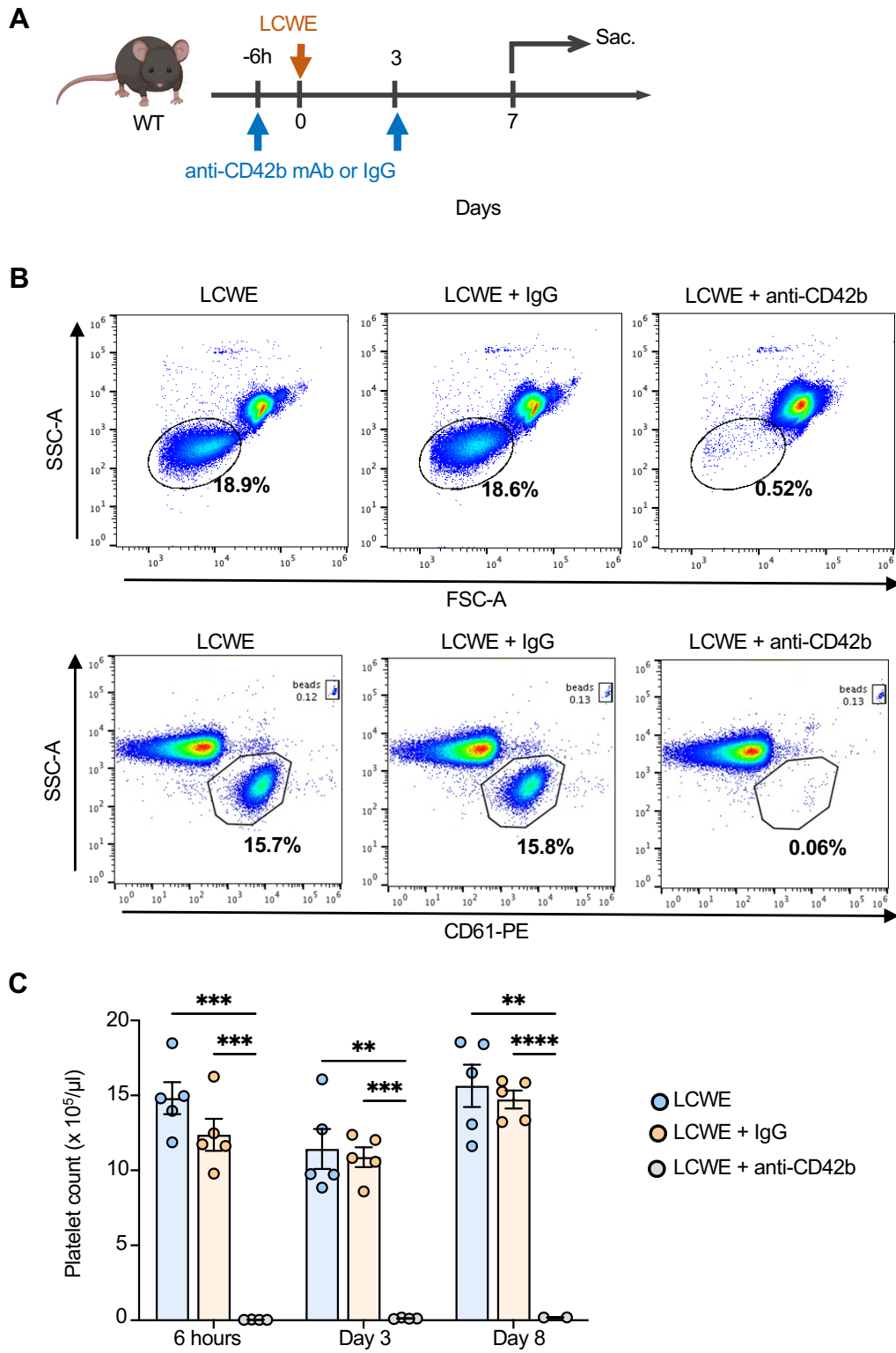
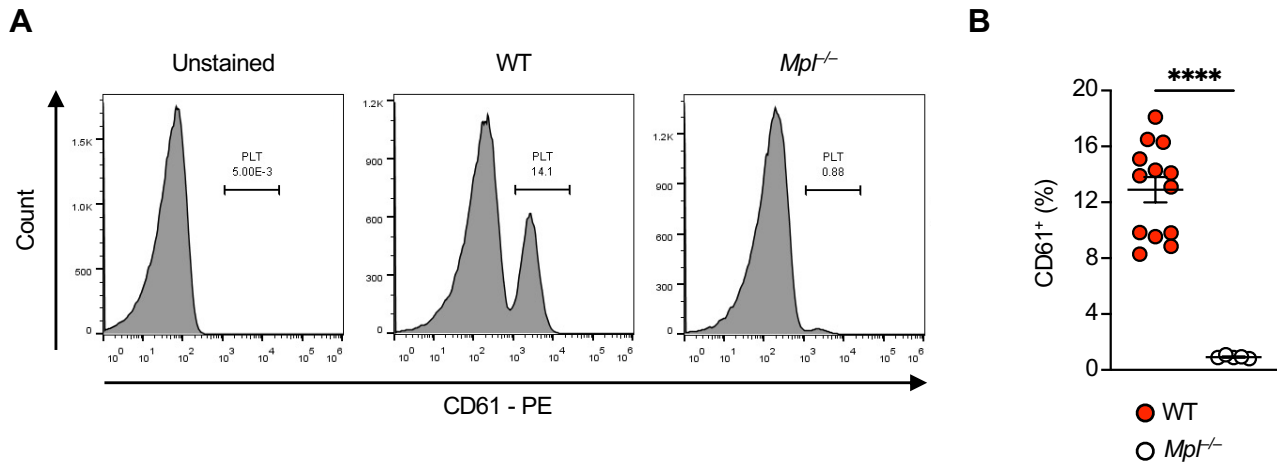


Supplementary Figure 1



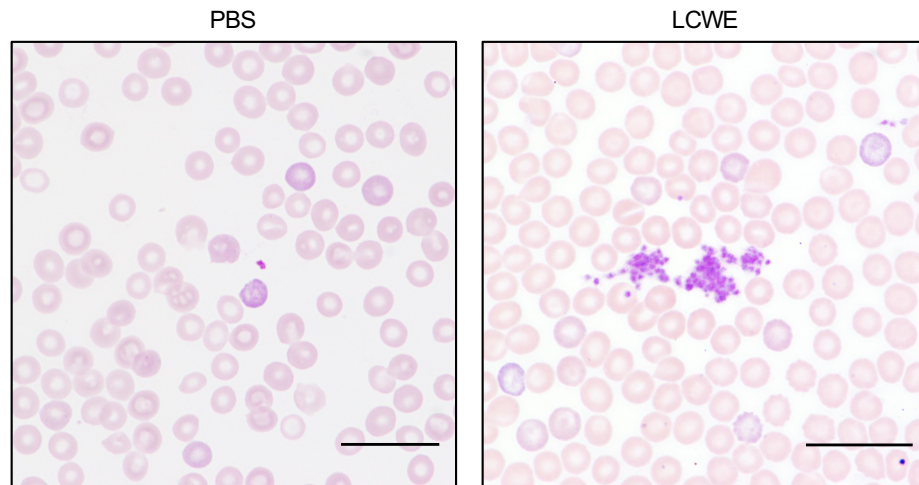
Supplementary Figure 1. Treatment with anti-CD42b significantly reduces platelet counts in LCWE-injected mice. (A) Schematic representation of the experimental design. WT mice were left either untreated or received anti-CD42b or an IgG isotype 6 hours prior LCWE-injection and again 3 days after the LCWE injection. One week post-LCWE injection, heart tissues and abdominal aortas were collected. (B) Representative flow cytometry plots showing the frequencies of platelets in the blood of mice injected with LCWE and treated with either the platelet-depleting antibody anti-CD42b or IgG control at day 7 post-LCWE injection (C) Absolute number of platelets in the blood of mice injected with LCWE and treated with either the platelet-depleting antibody anti-CD42b or IgG control. Each symbol represents one mouse. Results presented as mean \pm s.e.m. ** $p < 0.01$, *** $p < 0.001$, **** $p < 0.0001$ obtained by 2-way ANOVA with Bonferonni's multiple comparisons test.

Supplementary Figure 2



Supplementary Figure 2. Severe thrombocytopenia in *Mpl*^{-/-} mice. (A, B) Representative flow plots (A) and CD61⁺ cell quantification (B) in the blood of WT and *Mpl*^{-/-} mice (n=5 to 13 mice /group). Each symbol represents one mouse. Results presented as mean ± s.e.m. ****p<0.0001 obtained by Unpaired t-test with Welch's correction.

Supplementary Figure 3



Supplementary Figure 3. Platelet aggregates during LCWE-induced KD vasculitis. Representative pictures of blood smears from PBS- or LCWE-injected WT mice at 24 hours after injection. Scale bars: 20 μ m.