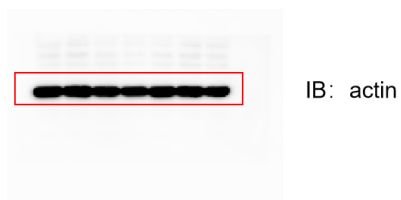
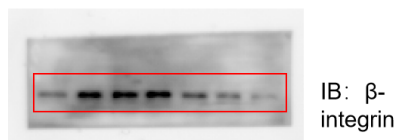


Figure S1. Immunofluorescence staining of SNX17 in retinas of WT and SNX31m/m mice. (A) The immunofluorescence results of SNX17 in WT and SNX31m/m mice. Increased expression of SNX17 in the outer plexiform layer is seen at the white arrow. Red: SNX17; blue: Hoechst-stained nuclei. (B) The protein expression of SNX17 was higher in SNX31m/m mice at 1, 2 and 4 months of age than in wild-type mice. Statistical analysis was performed using the unpaired parametric t test. Data are shown as mean \pm SEM. * $P < 0.05$.

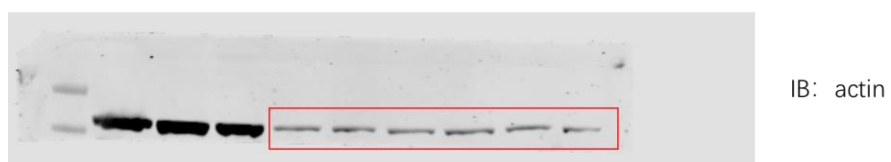
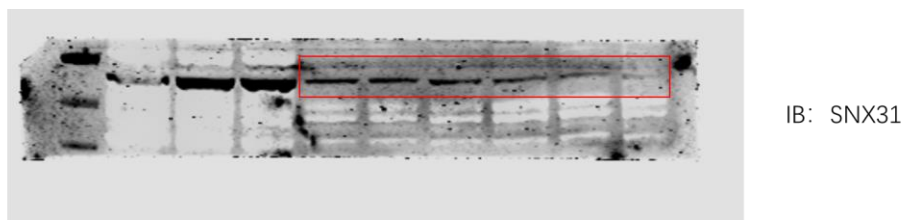
Full unedited gel for Figure 2B:



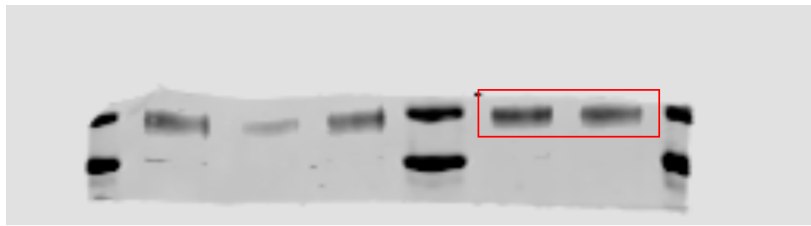
Full unedited gel for Figure 2C:



Full unedited gel for Figure 3C:



Full unedited gel for Figure 5E:



IB: integrin β 1



IB: actin



IB: integrin β 1



IB: actin

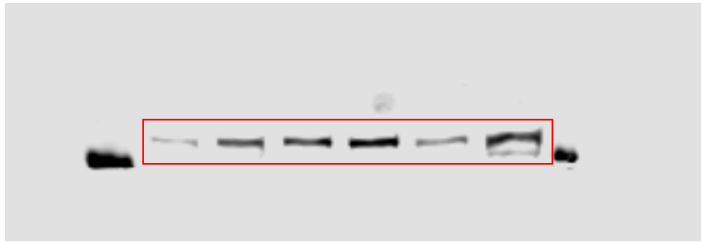


IB: integrin β 1

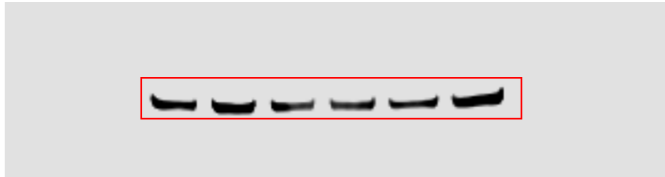


IB: actin

Full unedited gel for Figure 5F:

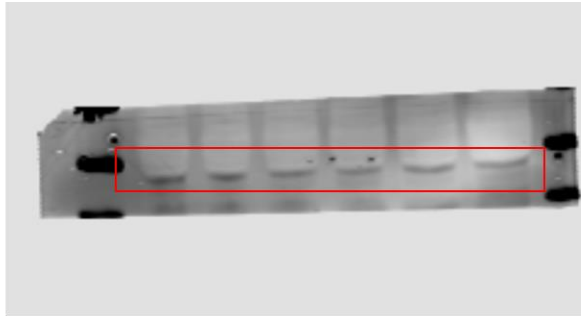


IB: SNX17

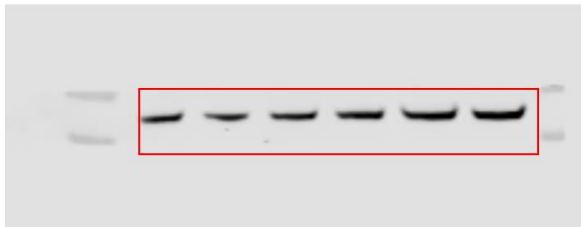


IB: actin

Full unedited gel for Figure 6A:

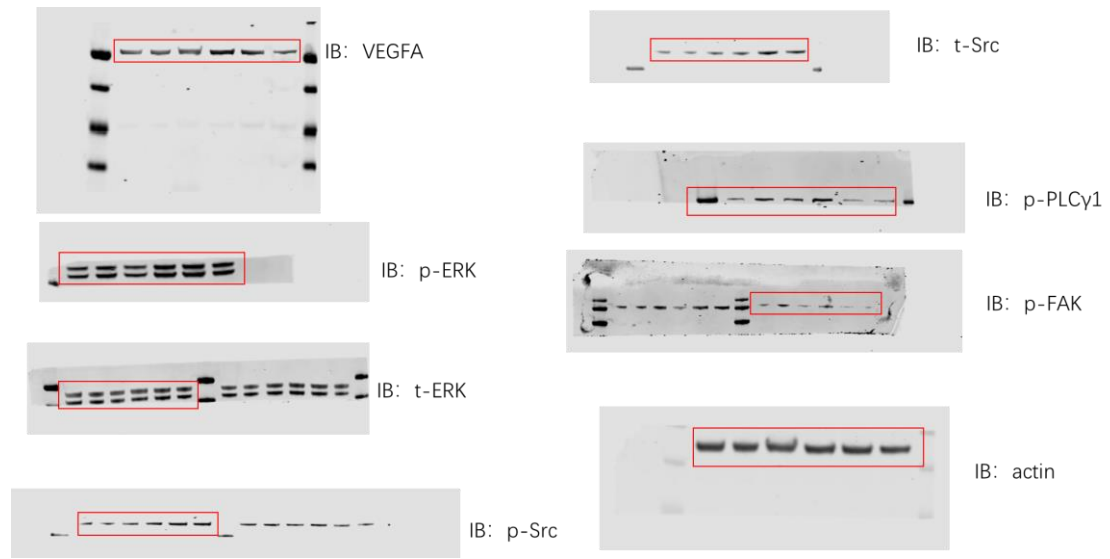


IB: β -catenin



IB: actin

Full unedited gel for Figure 6B:



Full unedited gel for Figure 7B:

