

Supplementary Materials

Fig. S1. CONSORT diagram for the clinical trial

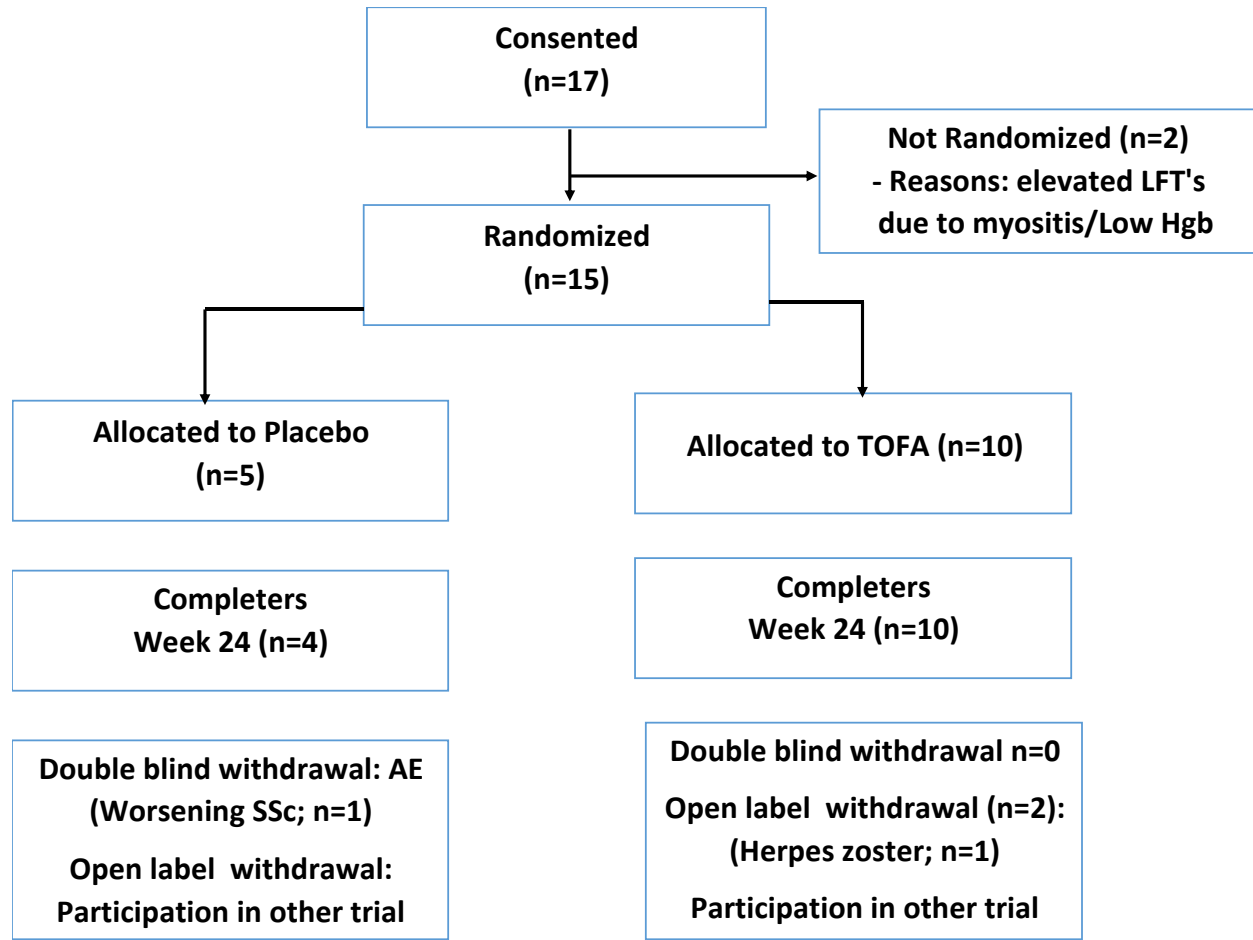


Fig. S2. Mean Trend Over Time: Change in the modified Rodnan skin score during the double blind and open label phases

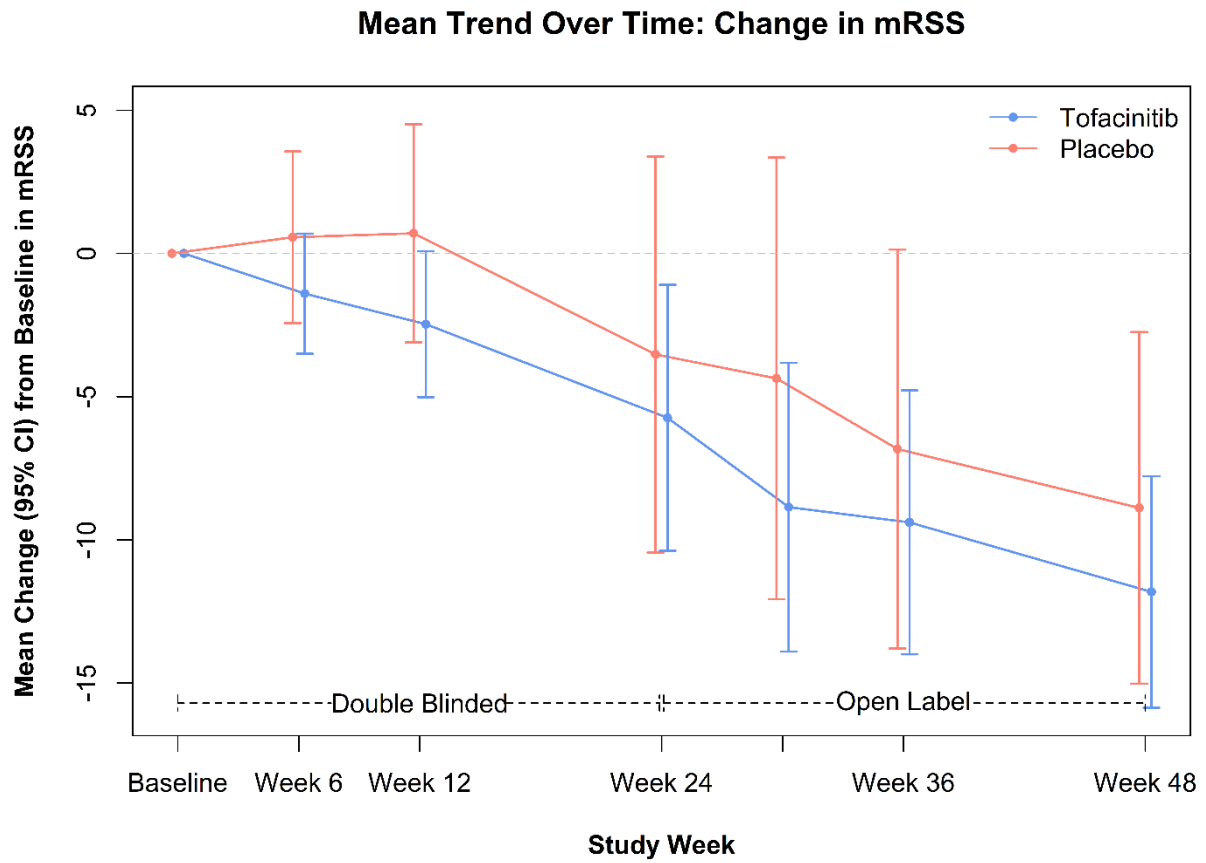


Fig. S3-T-SNE plot as in Figure 1, with cells colored by skin biopsy sample (Panel A), or by patient group (placebo patient baseline biopsies, PBO-Bsl; Placebo patient biopsies at Week 6, PBO-W6; tofacitinib treated patient baseline biopsies, TOFA-Bsl; tofacitinib treated patient Wk 6 biopsies, TOFA-W6).

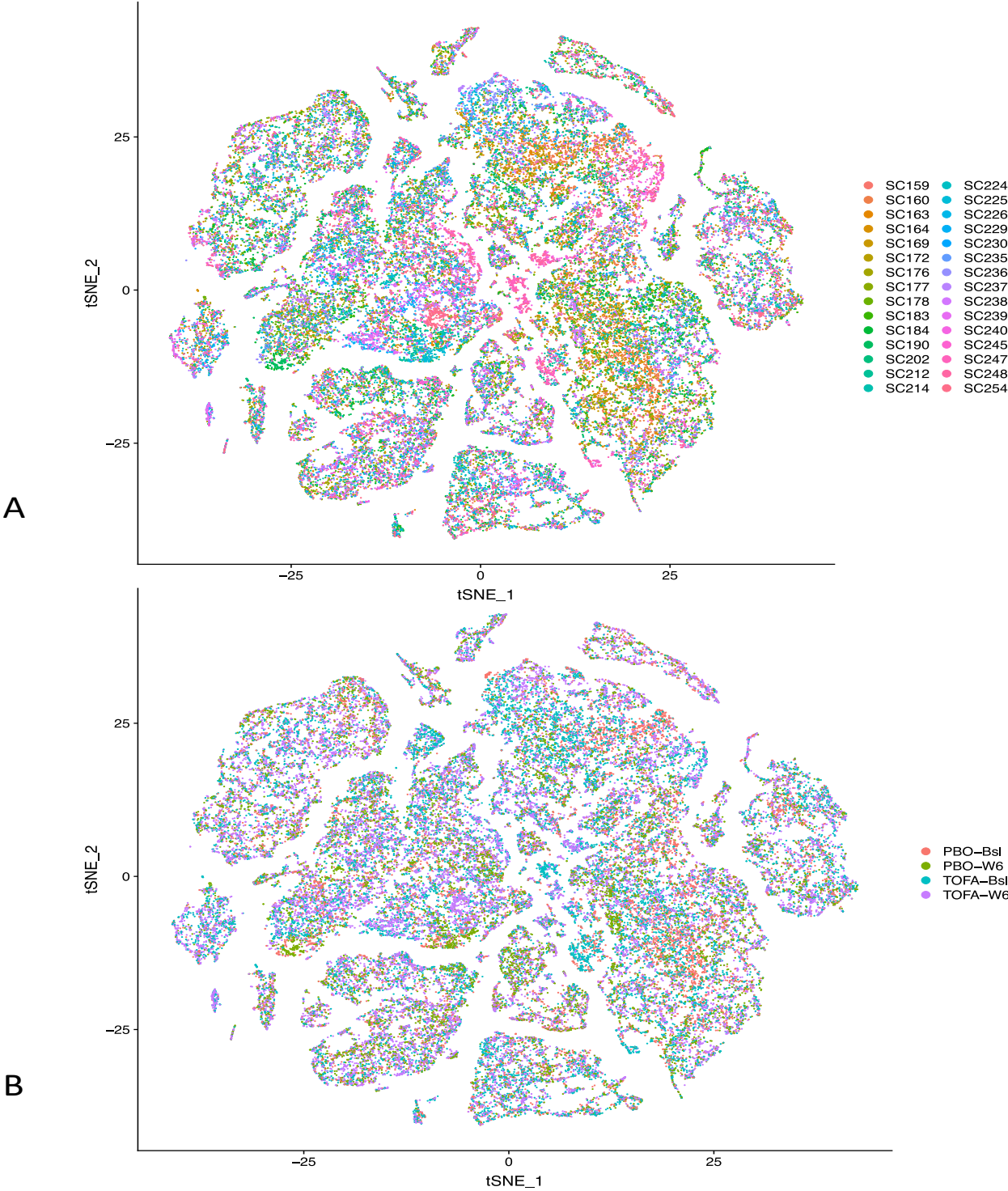
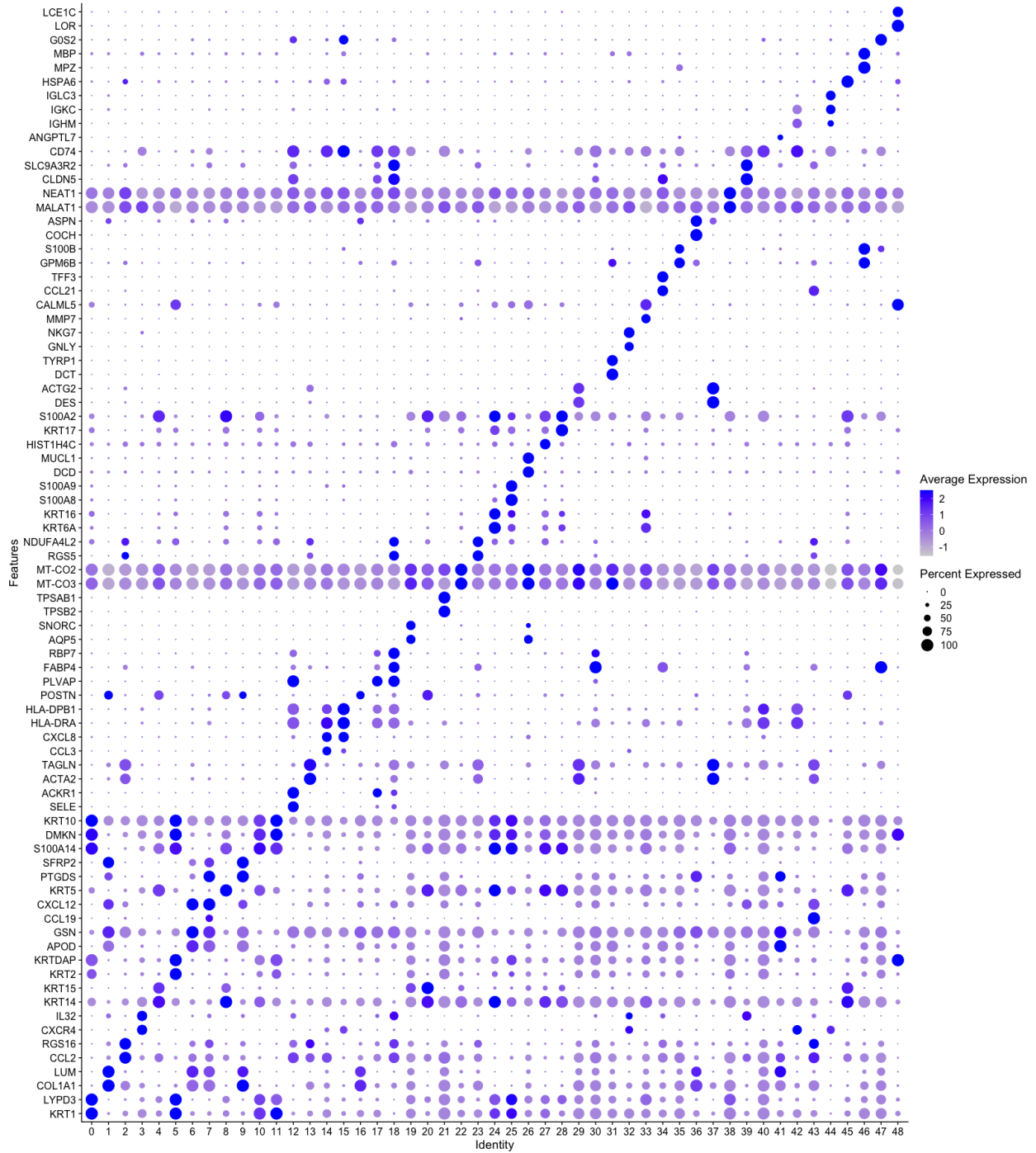


Fig. S4- Marker genes for each cell population, numbers on the x axis indicate cluster number as in Figure 1.



Cluster number	Average number of cells/cluster
0-Terminal Keratinocyte	103.5483871
1-PI16 Fibroblast	89.16129032
2-Pericyte	87.09677419
3-T Cell	82.32258065
4-Basal Keratinocyte	81.67741935
5-Terminal Keratinocyte	80.83870968
6-MYOC Fibroblast	77.67741935
7-CCL19 Fibroblast	77.06451613
8-Basal Keratinocyte	76.38709677
9-SFRP2 Fibroblast	74.74193548
10-S100A14 Keratinocyte	67.12903226
11-Terminal Keratinocyte	61.09677419
12-Venous Endothelial	56.96774194
13-RERGL Pericyte	54.16129032
14-Macrophage	54.03225806
15-Dendritic Cell	51.87096774
16-DPEP1 Fibroblast	47.09677419
17-Endothelial	42.5483871
18-Endothelial/Pericyte Doublet	42.19354839
19-CA6 Secretory	36.35483871
20-KRT15 Keratinocyte	35.48387097
21-Mast Cell	35.29032258
22-Dead Keratinocyte	30.96774194
23-STEAP4 Pericyte	29.83870968
24-KRT6A Keratinocyte	27.77419355
25-S100A8 Keratinocyte	27.74193548
26-SCGB1B2P Secretory	27.4516129
27-Proliferating	23.4516129
28-KRT17 Keratinocyte	22.4516129
29-Low Quality Smooth Muscle	20.67741935
30-Low Quality Endothelial	19.74193548
31-Melanocyte	18.96774194
32-NK Cell	18.51612903
33-KRT6B Keratinocytes	18.5483871
34-Lymphatic Endothelial	18.48387097
35-Neural	18.16129032
36-Dermal Papilla	15.90322581
37-Smooth Muscle	15.25806452
38-Low Quality Cells	14.22580645
39-Arterial Endothelial	11.4516129
40-Low Quality DC	11.38709677
41-ANGPTL7 Fibroblast	10.48387097
42-B Cell	8.064516129
43-CCL21 Pericyte	6.935483871
44-Plasma Cell	6.709677419
45-Stressed Keratinocyte	4.709677419
46-Schwann	3.677419355
47-Adipocyte	3.483870968
48-Cornified Envelope	2.322580645

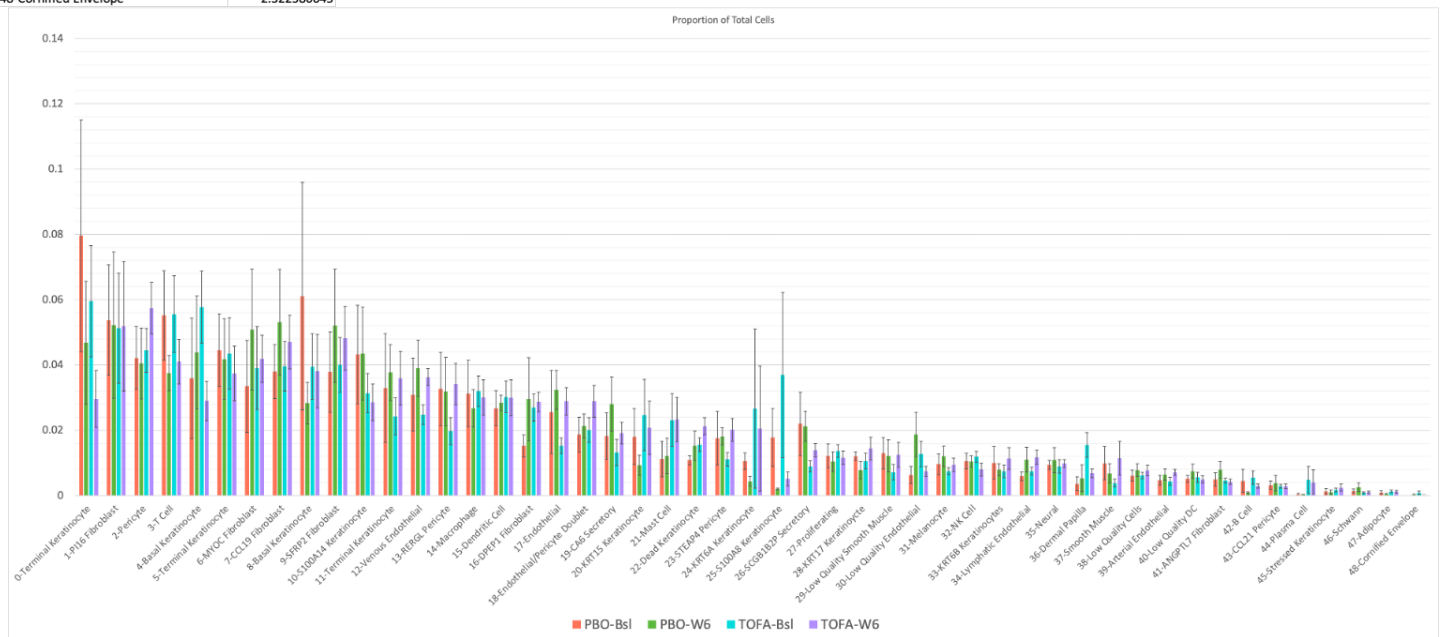


Figure S5. Proportions of cells in each cluster (panel A). Proportions of cells in each cluster by treatment group at baseline and week 6 skin biopsies (panel B). Error bars indicate standard deviation between samples in each group.

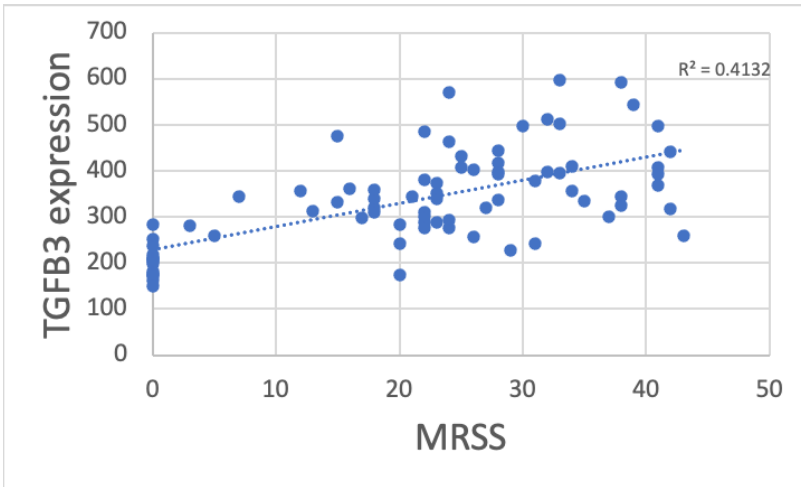
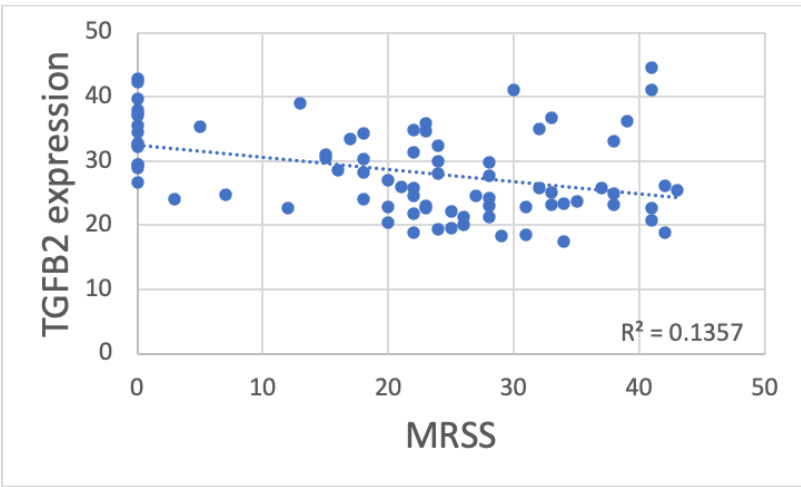
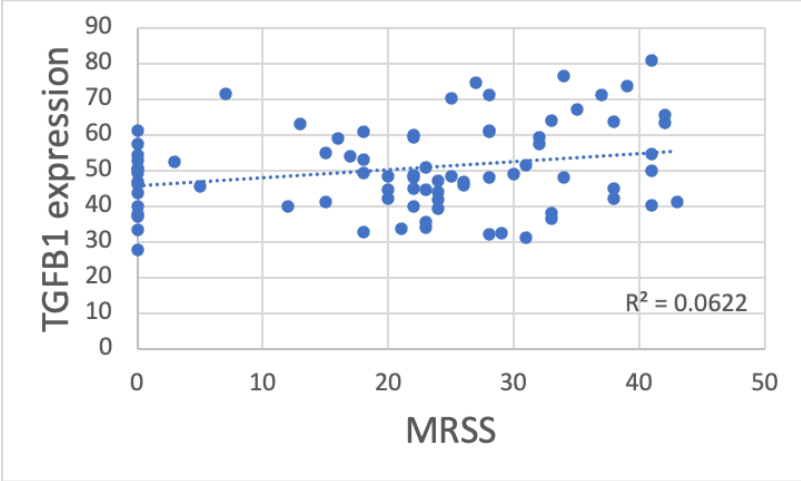


Fig. S6- Bulk skin gene expression from patients with dcSSc, correlations with TGFB isoform expression

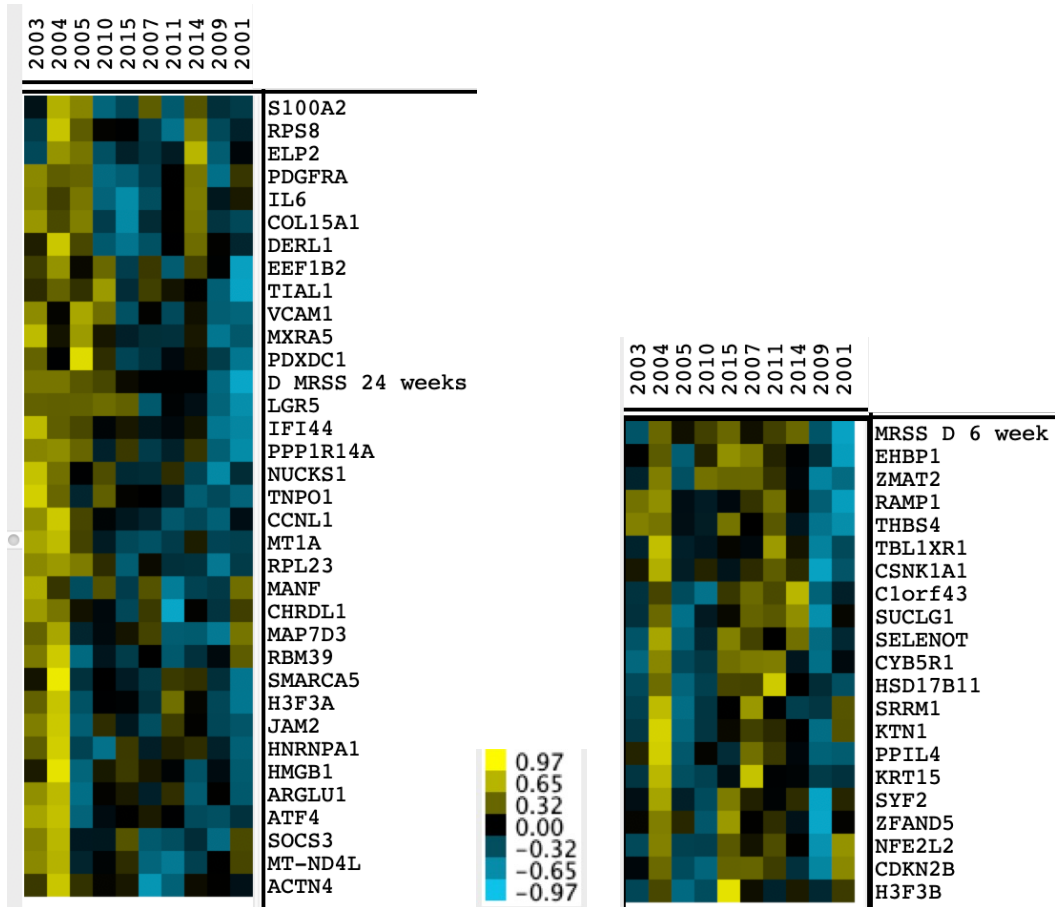


Figure S7. Change in gene expression by cluster of SFRP2/DPP4 fibroblast genes, comparing week 6 to baseline. Normalized change in MRSS is included in the clustering algorithm. Columns are arranged by change in MRSS at 24 weeks with increased (worsening) skin score (yellow) to the left and decreased (improved) skin score (blue) to the right. Genes are shown that cluster with change in MRSS at 24 weeks (D MRSS 24 weeks, left panel) or with change in MRSS at 6 weeks (D MRSS 6 weeks, right panel). Analysis of genes in clusters by Gene Ontology did not indicate and statistically significant Gene Ontology pathways.

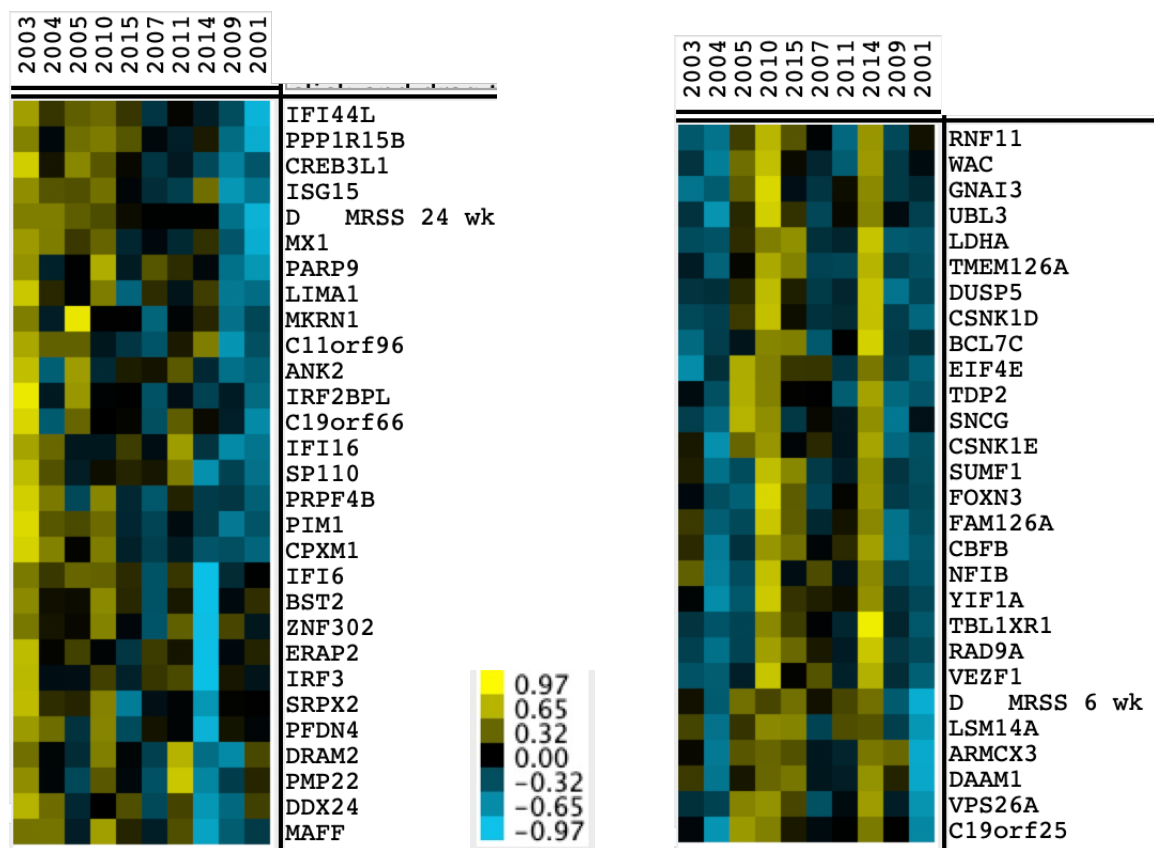
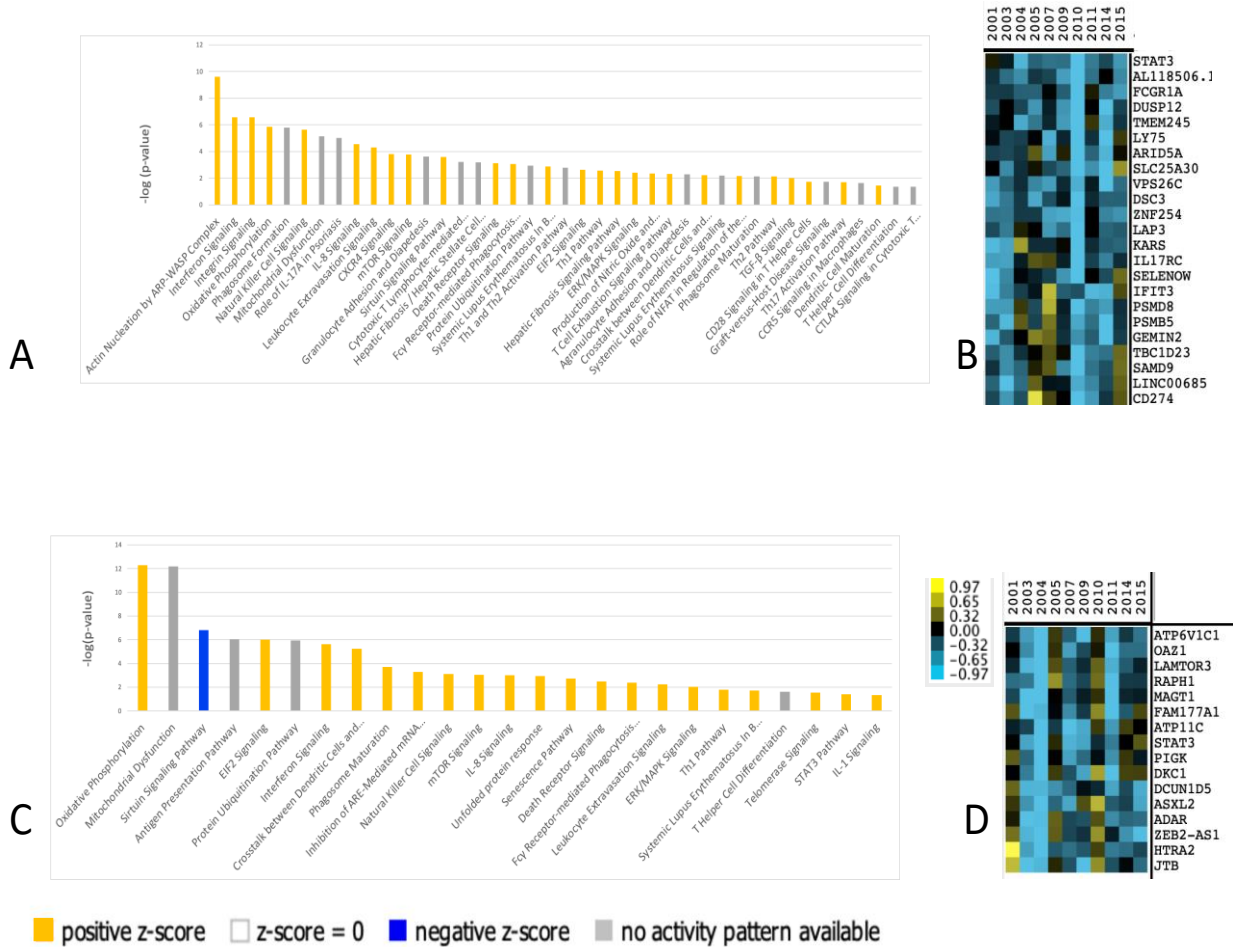


Figure S8. Change in gene expression by cluster of MYOC/CCL19 fibroblast genes, comparing week 6 to baseline. Normalized change in MRSS is included in the clustering algorithm. Columns are arranged by change in MRSS at 24 weeks with increased (worsening) skin score (yellow) to the left and decreased (improved) skin score (blue) to the right. Genes are shown that cluster with change in MRSS at 24 weeks (D MRSS 24 weeks, left panel) or with change in MRSS at 6 weeks (D MRSS 6 weeks, right panel). 24-week cluster genes indicated Gene Ontology pathways: Response to virus and response to type 1 interferon

Fig. S9-Ingenuity Pathway Analysis of scRNA-seq from myeloid populations. Pathway analysis of myeloid scRNA-seq data from baseline study biopsies (n=15), analyzed together with scRNA-seq data from previously described dcSSc (n=12) and healthy skin (n=10). Selected pathways from cluster 14, clustered with analogous cells in previous studies, representing macrophages (panel A) and cluster 15 clustered with analogous cells in previous studies representing DCs (panel C). Genes correlating with baseline MRSS (uncorrected $p < 0.05$) were included in the pathway analysis. Only selected significant pathways ($-\log(p\text{-value}) < 1.4$) are indicated. Yellow bars indicate positive associations with IPA expected direction of regulation; blue bars show negative associations with expected direction of regulation; open bars indicate no associations with IPA expected direction of regulation; and grey bars indicate no expected direction of regulation. Clustering of changes in pseudo-bulk gene expression in macrophages (cluster 14, panel B) and dendritic cells (cluster 15, panel D) at 6-week compared to baseline in tofacitinib-treated patients of all (filtered) genes, showing co-regulated genes clustering with STAT3 (indicated by red stars).



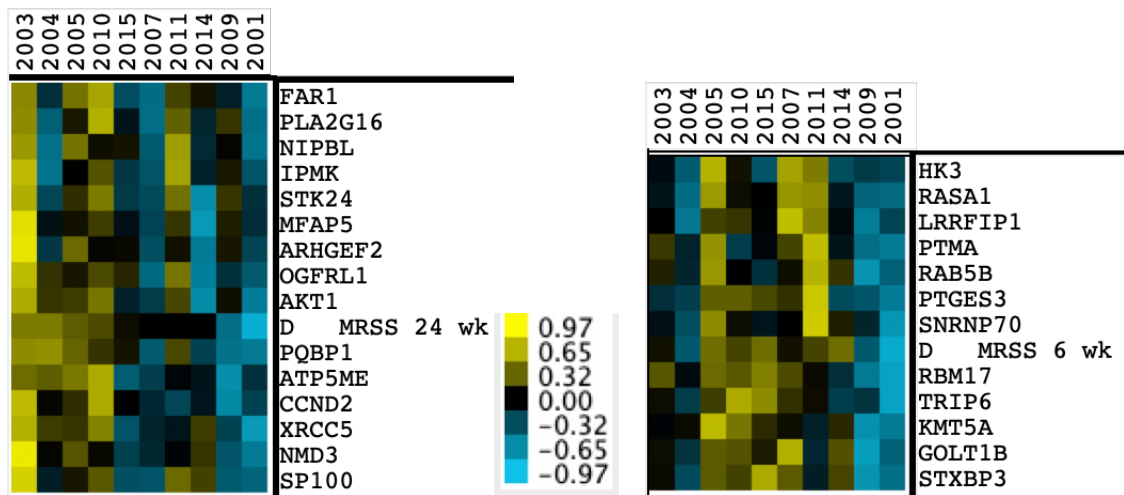


Figure S10. Change in gene expression by cluster of macrophage genes, comparing week 6 to baseline. Normalized change in MRSS is included in the clustering algorithm. Columns are arranged by change in MRSS at 24 weeks with increased (worsening) skin score (yellow) to the left and decreased (improved) skin score (blue) to the right. Genes are shown that cluster with change in MRSS at 24 weeks (D MRSS 24 weeks, left panel) or with change in MRSS at 6 weeks (D MRSS 6 weeks, right panel). Analysis of genes in clusters by Gene Ontology did not indicate any statistically significant pathways.

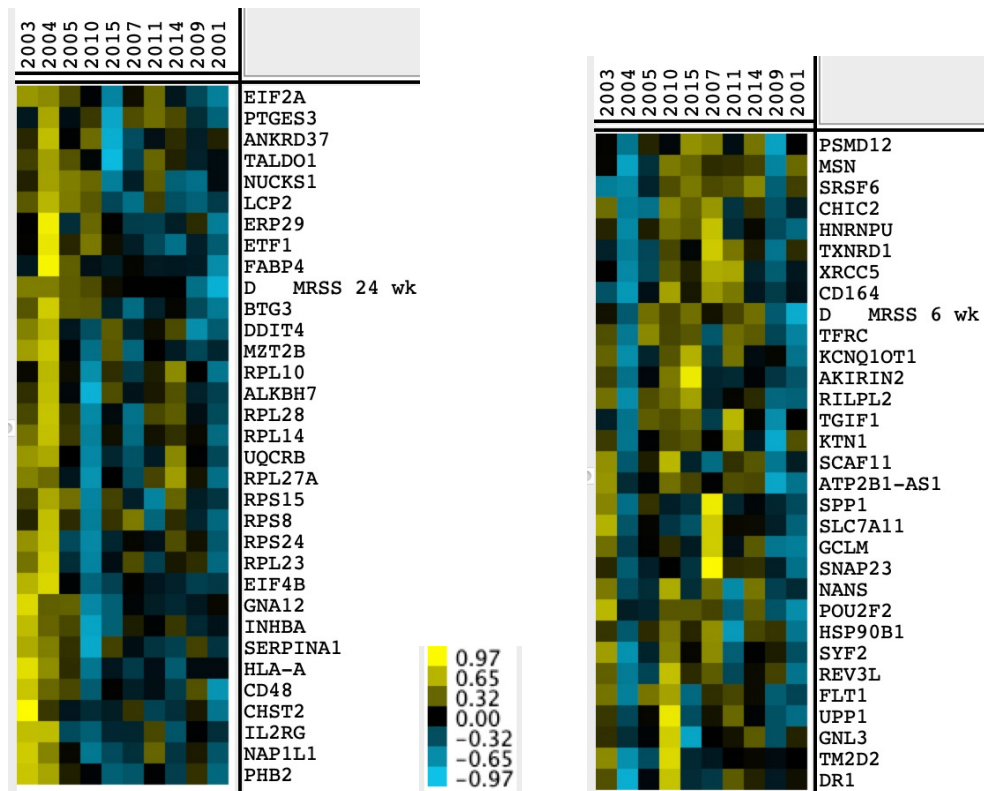


Figure S11. Change in gene expression by cluster of dendritic cell genes, comparing week 6 to baseline. Normalized change in MRSS is included in the clustering algorithm. Columns are arranged by change in MRSS at 24 weeks with increased (worsening) skin score (yellow) to the left and decreased (improved) skin score (blue) to the right. Genes are shown that cluster with change in MRSS at 24 weeks (D MRSS 24 weeks, left panel) or with change in MRSS at 6 weeks (D MRSS 6 weeks, right panel). Analysis of genes in clusters by Gene Ontology did not indicate and statistically significant pathways.

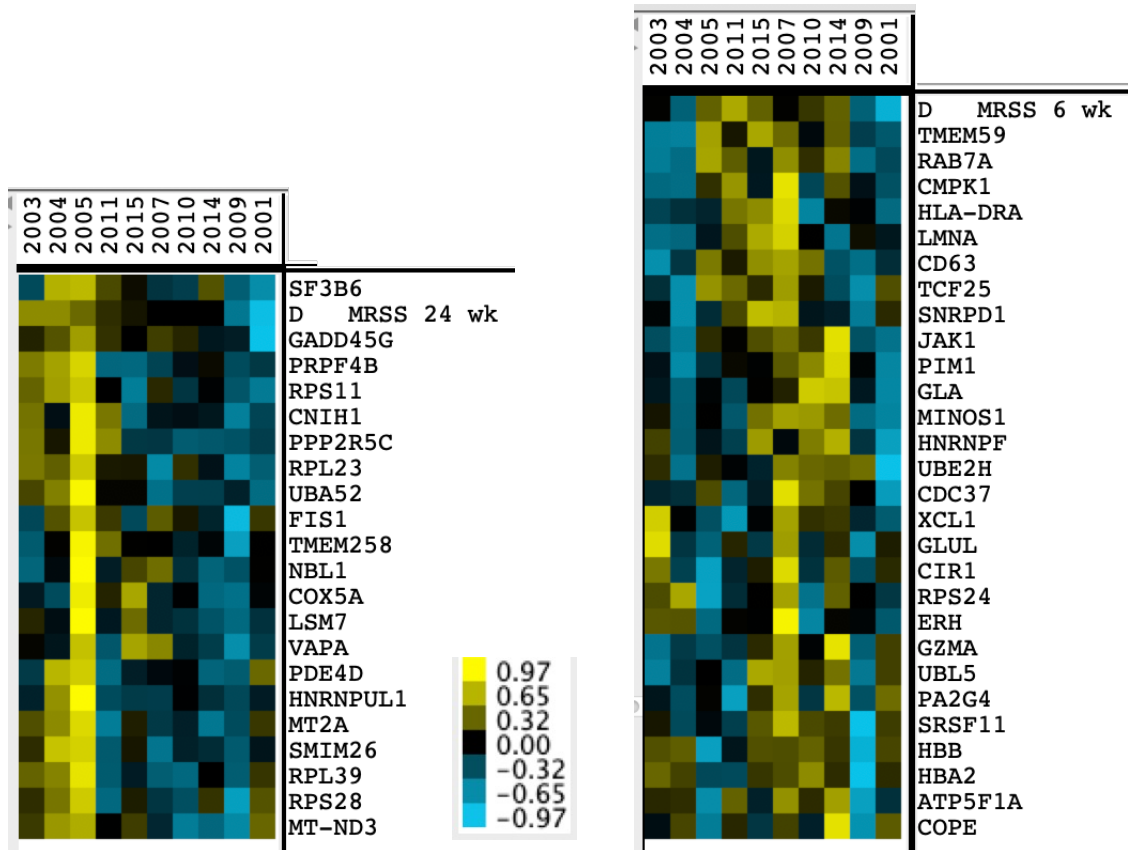


Figure S12. Change in gene expression by cluster of T cell genes, comparing week 6 to baseline. Normalized change in MRSS is included in the clustering algorithm. Columns are arranged by change in MRSS at 24 weeks with increased (worsening) skin score (yellow) to the left and decreased (improved) skin score (blue) to the right. Genes are shown that cluster with change in MRSS at 24 weeks (D MRSS 24 weeks, left panel) or with change in MRSS at 6 weeks (D MRSS 6 weeks, right panel). Analysis of genes in clusters by Gene Ontology did not indicate any statistically significant pathways.

Supplementary Table 1: Baseline and Demographics Characteristics

	Double Blind Trial			Open Label Extension		
	Overall (N=15)	Tofacitinib (N=10)	Placebo (N=5)	Overall (N=14)	Tofacitinib (N=10)	Placebo (N=4)
Age, Years, mean (SD)	50.8 (14.0)	46.2 (13.9)	60.0 (9.7)	49.7 (13.9)	46.2 (13.9)	58.4 (10.5)
Female, N (%)	10.0 (66.7)	7.0 (70.0)	3.0 (60.0)	9 (64.3)	7.0 (70.0)	2.0 (50.0)
White, N (%)	14.0 (93.3)	10.0 (100.0)	4.0 (80.0)	13.0 (92.9)	10.0 (100.0)	3.0 (75.0)
Not Hispanic or Latino, N (%)	15.0 (100.0)	10.0 (100.0)	5.0 (100.0)	14.0 (100.0)	10.0 (100.0)	4.0 (100.0)
Disease Duration, Years*, mean (SD)	2.1 (1.2)	2.0 (1.3)	2.4 (1.2)	2.0 (1.2)	2.0 (1.3)	2.1 (1.1)
mRSS, mean (SD)	23.3 (8.4)	22.7 (9.3)	24.4 (6.9)	22.8 (8.5)	22.7 (9.3)	23.0 (7.1)
FVC% Predicted, mean (SD)	88.4 (16.6)	90.7 (16.5)	83.8 (17.5)	88.2 (17.2)	90.7 (16.5)	82.0 (19.6)
DLCO% Predicted, Uncorrected for Hgb, mean (SD)	85.6 (19.8)	82.4 (19.7)	92.0 (20.5)	86.2 (20.4)	82.4 (19.7)	95.8 (21.6)
Patient Global Assessment, mean (SD) ¹	4.3 (2.2)	3.8 (1.9)	5.4 (2.6)	4.3 (2.3)	3.8 (1.9)	5.5 (3.0)
HAQ-DI, mean (SD) ²	1.0 (0.6)	1.1 (0.6)	0.8 (0.5)	0.9 (0.6)	1.1 (0.6)	0.6 (0.3)
Physician Global Assessment, mean (SD) ¹	5.3 (1.7)	5.6 (1.8)	4.8 (1.6)	5.3 (1.8)	5.6 (1.8)	4.5 (1.7)
Tendon Friction Rubs, N (%)	2.0 (13.3)	1.0 (10.0)	1.0 (20.0)	2.0 (14.3)	1.0 (10.0)	1.0 (25.0)
Large Joint Contractures, N (%)	5.0 (33.3)	5.0 (50.0)	0.0 (0.0)	5.0 (35.7)	5.0 (50.0)	0.0 (0.0)
Background Immunosuppressive, N (%)	13.0 (86.7)	9.0 (90.0)	4.0 (80.0)	12.0 (85.7)	9.0 (90.0)	3.0 (75.0)
Mycophenolate mofetil, N (%)	13.0 (86.7)	9.0 (90.0)	4.0 (80.0)	12.0 (85.7)	9.0 (90.0)	3.0 (75.0)
Mycophenolate mofetil in mg/day, mean (SD)	1500.2 (706.8)	1389.1 (781.3)	1750.0 (500.0)	1541.8 (721.3)	1389.1 (781.3)	2000.0 (0.0)
Methotrexate, mg/week., N (%)	2.0 (13.3)	1.0 (10.0)	1.0 (20.0)	2.0 (14.2)	1.0 (10.0)	1.0 (25.0)
Methotrexate, mg/week, mean (SD)	25.0 (0.0)	25.0 (-)	25.0 (-)	25.0 (0.0)	25.0 (-)	25.0 (-)

Use of Prednisone, N (%)	4.0 (26.7)	2.0 (20.0)	2.0 (40.0)	3.0 (21.4)	2.0 (20.0)	1.0 (25.0)
Prednisone dose in mg/day, mean (SD)	8.8 (2.5)	7.5 (3.5)	10.0 (0.0)	8.3 (2.9)	7.5 (3.5)	10.0 (-)

*Disease onset was defined as first non-Raynaud's sign or symptoms; mRSS=modified Rodnan skin score; FVC=Forced vital capacity, DLCO =Diffusion capacity of carbon monoxide; ¹=theoretical range 0-10; ²=theoretical range 0-3

Supplementary Table 2: Safety Outcomes during the double blind and open label extension in the RCT

	Double Blinded Trial		Open Label Extension	
	Tofacitinib N=10	Placebo N=5	Tofacitinib → Tofacitinib N = 10	Placebo → Tofacitinib N= 4
Grade 3 or Higher AEs	0	0	3	1
Grade 2 of Higher AEs¹	13	10	18	4
Treatment Emergent AEs	20	14	21	7
<i>Infections and Infestations</i>	4	2	4	1
<i>Gastrointestinal Disorders</i>	4	1	3	0
<i>General Disorders</i>	1	4	0	0
<i>Musculoskeletal and Connective Tissue Disorders</i>	2	3	2	1
<i>Skin and Subcutaneous Disorder</i>	1	0	6	1
<i>Investigations</i>	2	1	3	2
<i>Respiratory, Thoracic, and Mediastinal Disorders</i>	2	1	1	0
<i>Nervous System Disorders</i>	2	0	2	0
<i>Cardiac Disorders</i>	1	1	0	1
<i>Renal and Urinary Disorders</i>	0	1	0	1
<i>Ear and Labyrinth Disorders</i>	1	0	0	0
AESI	5	0	6	1
<i>Serious Infections</i>	0	0	1	0
<i>Infections Requiring Treatment</i>	4	0	2	0
Otitis Externa	1	0	0	0
Urinary Tract Infection	2	0	0	0
Digital Ulcer Infection	1	0	1	0
CMV	0	0	1	0
<i>Gastrointestinal Perforations</i>	0	0	0	0
<i>Herpes Zoster</i>	0	0	1	0
<i>Malignancies</i>	0	0	0	0

<i>Gastrointestinal Perforations</i>	0	0	0	0
<i>Laboratories Abnormalities³</i>	1	0	2	1
Hypercholesterolemia	0	0	1	0
Hypertriglyceridemia	0	0	1	0
HDL>50% ⁴	1	0	0	1

AE= Adverse Event; AESI= Adverse Event of Special Interest; CMV= Cytomegalovirus; HDL= high-density lipoproteins

¹ Grade 2: Moderate; minimal, local or non-invasive intervention indicated; limiting age-appropriate instrumental ADL (activities of daily living)

² Two participants had UTI

³ Additional lab values included per protocol as AEs of special interest of which did not occur during the study include: Hb \leq 8 gm/dL, Hb drop by >2 gm/dL, AST/ALT >3 ULN, increase in serum creatinine $>50\%$, Hy's law= ALT $> 3x$ ULN + bilirubin $> 2x$ ULN Lymphocyte count less than 500 cells/mm³, ANC less than 500 cells/mm³

⁴ Reported as AE of special interest per protocol as tofacitinib can impact lipids but was not considered clinically significant.

Supplementary Table 3: Secondary Endpoints at Week 24 and Week 48 – Efficacy: Changes from Baseline

	Double Blind Trial (Week 24)				Open label Extension (Week 48)			
	Median (IQR)		Difference of median (95% CI) ¶	P-Value	Median (IQR)		Difference of median (95% CI) ¶	P-Value
	Tofacitinib (N = 10)	Placebo (N = 4)			Tofacitinib→Tofacitinib (N = 8)	Placebo→Tofacitinib (N = 3)		
mRSS	-5.5 (-6.0, -1.0)	-2.5 (-7.5, 2.5)	-3.0 (-12.0, 6.0)	0.47	-12.5 (-15.5, -5.5)	-9.0 (-11.0, -9.0)	-3.5 (-7.0, 5.0)	0.60
Patient Global Assessment	0.0 (-1.0, 1.0)	-1.5 (-5.0, -0.5)	1.5 (0.0, 8.0)	0.16	-0.5 (-1.5, 1.0)	0.0 (-8.0, 5.0)	-0.5 (-6.0, 8.0)	0.85
Physician Global Assessment	-1.5 (-3.0, -1.0)	0.5 (0.0, 1.0)	-2.0 (-3.0, 2.0)	0.03	-3.5 (-4.0, -1.0)	-1.0 (-2.0, 2.0)	-2.5 (-6.0, 1.0)	0.15
HAQ-DI	-0.1 (-0.3, 0.0)	0.13 (0, 0.1)	-0.2 (-0.4, 0.1)	0.30	-0.4 (-0.4, -0.1)	0.1 (-0.1, 0.3)	-0.5 (-0.6, 0.0)	0.07
FVC % Predicted	-0.5 (-2.0, 6.0)	5.0 (2.0, 9.5)	-5.5 (-14.0, 3.0)	0.14	-1.0 (-6.0, 1.5)	4.0 (-3.0, 15.0)	-5 (-17.0, 7.0)	0.92
ACR	0.3 (0.0, 1.0)	0.1 (0.0, 0.6)	0.2 (-0.5, 1.0)	0.84	1.0 (0.3, 1.0)	0.8 (0.5, 1.0)	0.2 (-0.5, 0.5)	0.92

*Negative is improvement for all outcome measures, except FVC% predicted

¶ 95% CI of difference of median was obtained via bootstrapping.

Supplementary Table 4: Top 50 genes/cluster

cluster	gene	avg_logFC	pct.1	pct.2	p_val	p_val_adj
0	KRT1	1.9721797	1	0.56	0	0
0	LYPD3	1.850546992	0.996	0.427	0	0
0	KRT10	1.729270499	1	0.847	0	0
0	SFN	1.690887964	1	0.67	0	0
0	SERPINB2	1.609799454	0.939	0.283	0	0
0	DMKN	1.478722092	1	0.59	0	0
0	AQP3	1.415986606	0.998	0.521	0	0
0	TACSTD2	1.350037576	0.996	0.516	0	0
0	DSP	1.308965821	0.983	0.463	0	0
0	KRTDAP	1.248193366	0.98	0.413	0	0
0	LGALS7B	1.210466661	0.991	0.507	0	0
0	PHLDA2	1.181818143	0.956	0.487	0	0
0	PERP	1.179131174	1	0.696	0	0
0	LY6D	1.173808315	0.997	0.471	0	0
0	S100A14	1.171144873	0.998	0.513	0	0
0	SBSN	1.171111544	0.941	0.257	0	0
0	SERPINB5	1.093049992	0.972	0.351	0	0
0	CLDN1	1.081912845	0.875	0.181	0	0
0	KLF5	1.080681255	0.985	0.456	0	0
0	DSC3	1.02554917	0.954	0.327	0	0
0	CLDN4	1.025491772	0.839	0.17	0	0
0	FGFBP1	0.997202261	0.727	0.157	0	0
0	TUBB2A	0.938320162	0.979	0.607	0	0
0	IRF6	0.935430441	0.898	0.2	0	0
0	TUBA4A	0.826132328	0.918	0.417	0	0
0	EMP2	0.809103678	0.936	0.543	0	0
0	HBEGF	0.788268529	0.713	0.219	0	0
0	EHF	0.777897794	0.786	0.146	0	0
0	CCL27	0.773184177	0.823	0.201	0	0
0	PKP1	0.771037033	0.869	0.209	0	0
0	SLC38A2	0.768709538	0.948	0.674	0	0
0	DSG1	0.765928829	0.832	0.175	0	0
0	KRT2	0.740697298	0.782	0.303	0	0
0	KLF4	0.735338597	0.979	0.728	0	0
0	EZR	0.729793725	0.96	0.513	0	0
0	LGALS7	0.726599185	0.603	0.247	0	0
0	BAZ1A	0.724494588	0.886	0.432	0	0
0	HCAR3	0.713847244	0.593	0.087	0	0
0	TUBA1C	0.713381445	0.931	0.564	0	0
0	DEFB1	0.70516673	0.801	0.166	0	0
0	EPHA2	0.703229294	0.771	0.18	0	0
0	ADRB2	0.691787991	0.766	0.219	0	0
0	KLK11	0.681565136	0.79	0.188	0	0
0	NXF1	0.675920772	0.8	0.266	0	0
0	SOX15	0.674582431	0.857	0.244	0	0
0	DYNLL1	0.669257776	0.997	0.946	0	0
0	ABHD5	0.669188715	0.814	0.287	0	0
0	CD55	0.664371336	0.852	0.461	0	0
0	DNAJA1	0.661836801	0.996	0.82	0	0
0	PLIN3	0.660561808	0.818	0.292	0	0
1	COL1A1	2.494484638	0.999	0.468	0	0
1	LUM	2.470142997	0.99	0.276	0	0
1	PI16	2.398787847	0.84	0.08	0	0
1	COL1A2	2.395930304	1	0.455	0	0
1	COL3A1	2.313007362	0.987	0.369	0	0

1	MMP2	2.295657587	0.997	0.222	0	0
1	COMP	2.278187714	0.585	0.062	0	0
1	FBLN1	2.275928895	0.979	0.281	0	0
1	ELN	2.270597391	0.931	0.13	0	0
1	DCN	2.241280591	0.999	0.542	0	0
1	SFRP2	2.23657602	0.919	0.131	0	0
1	CTHRC1	2.14006806	0.964	0.146	0	0
1	SPARC	2.094846179	0.997	0.58	0	0
1	WISP2	1.967734922	0.87	0.111	0	0
1	CTSK	1.966815892	0.973	0.179	0	0
1	CCDC80	1.89346588	0.988	0.314	0	0
1	MFAP5	1.893462828	0.869	0.087	0	0
1	FBLN2	1.785986336	0.971	0.188	0	0
1	FSTL1	1.784700341	0.982	0.232	0	0
1	DPT	1.771833536	0.916	0.139	0	0
1	CFD	1.750398537	0.918	0.463	0	0
1	POSTN	1.714477826	0.688	0.187	0	0
1	MFAP4	1.703140524	0.969	0.245	0	0
1	IGFBP4	1.669672589	0.98	0.461	0	0
1	COL6A2	1.616637099	1	0.483	0	0
1	BGN	1.603122288	0.807	0.315	0	0
1	CTGF	1.54839032	0.797	0.239	0	0
1	AEBP1	1.544983992	0.969	0.215	0	0
1	PLAC9	1.533499308	0.972	0.336	0	0
1	C1R	1.499934416	0.975	0.366	0	0
1	CXCL14	1.492440577	0.953	0.755	0	0
1	COL6A1	1.488339336	0.995	0.411	0	0
1	SERPINF1	1.480424092	0.964	0.361	0	0
1	FBN1	1.439424424	0.9	0.104	0	0
1	THY1	1.384947559	0.902	0.183	0	0
1	HTRA1	1.376671187	0.964	0.246	0	0
1	MXRA8	1.355976358	0.932	0.176	0	0
1	C1S	1.315712363	0.987	0.322	0	0
1	LOX	1.308321032	0.878	0.093	0	0
1	FN1	1.305568852	0.872	0.191	0	0
1	PCOLCE	1.300190598	0.947	0.294	0	0
1	S100A6	1.266964518	1	0.819	0	0
1	TIMP1	1.266713308	0.992	0.569	0	0
1	CD99	1.259055608	0.997	0.689	0	0
1	TIMP2	1.257112648	0.956	0.257	0	0
1	MGP	1.245660264	0.955	0.471	0	0
1	THBS2	1.244402591	0.865	0.131	0	0
1	LGALS1	1.223946633	1	0.658	0	0
1	C1QTNF3	1.223855103	0.659	0.021	0	0
1	COL6A3	1.200556785	0.904	0.18	0	0
2	CCL2	2.628897911	0.973	0.484	0	0
2	RGS16	2.330185935	0.955	0.285	0	0
2	C11orf96	2.219597803	0.926	0.161	0	0
2	IL6	2.103156323	0.734	0.108	0	0
2	GEM	1.901234639	0.864	0.178	0	0
2	MT1A	1.867012416	0.808	0.073	0	0
2	RGS5	1.764812914	0.582	0.069	0	0
2	CEBPD	1.707652687	0.986	0.813	0	0
2	HSPA6	1.672967849	0.388	0.124	0	0
2	CCL8	1.575239345	0.387	0.03	0	0
2	TAGLN	1.521202612	0.965	0.266	0	0
2	ID4	1.515167586	0.811	0.228	0	0
2	ADAMTS1	1.386601822	0.856	0.216	0	0
2	CRISPLD2	1.376030383	0.797	0.138	0	0
2	ADIRF	1.360034192	0.995	0.617	0	0
2	DDIT4	1.353870335	0.844	0.388	0	0
2	JUNB	1.347477541	0.999	0.96	0	0
2	ACTA2	1.304942552	0.854	0.156	0	0
2	SOCS3	1.285773186	0.952	0.581	0	0

2	CXCL2	1.277341507	0.523	0.193	0	0
2	GADD45B	1.273099563	0.985	0.705	0	0
2	TPM2	1.254411591	0.879	0.2	0	0
2	MYL9	1.235287862	0.957	0.438	0	0
2	ZFP36	1.214255037	0.994	0.893	0	0
2	GJA4	1.200763079	0.604	0.047	0	0
2	ZNF331	1.193953963	0.624	0.121	0	0
2	CDKN1A	1.152623858	0.968	0.738	0	0
2	IGFBP5	1.149773873	0.744	0.217	0	0
2	PPP1R15A	1.145511173	0.995	0.842	0	0
2	IER3	1.137740152	0.943	0.774	0	0
2	LBH	1.12917487	0.777	0.168	0	0
2	TINAGL1	1.128646308	0.857	0.124	0	0
2	RRAD	1.127415462	0.633	0.072	0	0
2	ATF3	1.108938187	0.911	0.542	0	0
2	NR4A1	1.092985563	0.893	0.474	0	0
2	IRF1	1.077124519	0.928	0.547	0	0
2	MT2A	1.061117261	0.949	0.797	0	0
2	CRYAB	1.031311901	0.714	0.435	0	0
2	CPE	1.026039324	0.902	0.226	0	0
2	ADAMTS4	1.00887127	0.605	0.087	0	0
2	MT1M	1.000852215	0.729	0.178	0	0
2	RERGL	0.992164878	0.448	0.033	0	0
2	NDUFA4L2	0.981254763	0.605	0.224	0	0
2	IGFBP7	0.97891793	1	0.632	0	0
2	MYC	0.956012572	0.927	0.694	0	0
2	ADRA2A	0.928439339	0.623	0.057	0	0
2	CALD1	0.912099848	0.964	0.563	0	0
2	PHLDA1	0.911699224	0.656	0.196	0	0
2	CSRNP1	0.886164389	0.748	0.27	0	0
2	CYCS	1.026872748	0.842	0.69	2.48E-289	5.90E-285
3	CXCR4	1.945957378	0.822	0.068	0	0
3	IL32	1.726271481	0.82	0.119	0	0
3	SRGN	1.660338349	0.914	0.162	0	0
3	CD52	1.574453432	0.783	0.039	0	0
3	CREM	1.567299558	0.781	0.189	0	0
3	LTB	1.468084389	0.628	0.018	0	0
3	DUSP2	1.464595834	0.785	0.165	0	0
3	KLRB1	1.319011537	0.319	0.009	0	0
3	CD69	1.293689362	0.575	0.021	0	0
3	SARAF	1.228559464	0.88	0.523	0	0
3	SAMSN1	1.199136927	0.639	0.035	0	0
3	TRAC	1.177242809	0.649	0.033	0	0
3	RGS1	1.161882269	0.443	0.038	0	0
3	ARHGDI3	1.137198353	0.771	0.248	0	0
3	BTG1	1.117889638	0.998	0.9	0	0
3	BIRC3	1.082859996	0.634	0.152	0	0
3	TRBC2	1.080243422	0.548	0.007	0	0
3	CCL5	1.076003937	0.332	0.017	0	0
3	RGCC	1.04842238	0.651	0.22	0	0
3	TRBC1	1.038520198	0.432	0.006	0	0
3	CD3D	1.022603216	0.614	0.003	0	0
3	CYTIP	1.002076549	0.573	0.038	0	0
3	CORO1A	0.984013445	0.629	0.046	0	0
3	DUSP4	0.971700568	0.43	0.072	0	0
3	IL7R	0.970639105	0.512	0.009	0	0
3	TMSB4X	0.962686217	1	0.993	0	0
3	ZFP36L2	0.962027585	0.965	0.84	0	0
3	PTPRC	0.961326496	0.639	0.035	0	0
3	CLEC2D	0.939780329	0.527	0.02	0	0
3	RHOH	0.921609435	0.548	0.014	0	0
3	LEPROTL1	0.910443436	0.58	0.119	0	0
3	LAPTM5	0.866320028	0.662	0.083	0	0
3	B2M	0.863313069	1	0.998	0	0

3	STK4	0.860986076	0.619	0.11	0	0
3	GPR183	0.844011369	0.544	0.068	0	0
3	RPS29	0.842797541	1	0.999	0	0
3	ACAP1	0.832132505	0.583	0.042	0	0
3	FXYD5	0.823399422	0.694	0.259	0	0
3	CD2	0.821229784	0.487	0.007	0	0
3	HCST	0.809206307	0.581	0.062	0	0
3	EZR	0.804303646	0.857	0.523	0	0
3	CD37	0.800053021	0.586	0.048	0	0
3	RPS27	0.789924433	1	1	0	0
3	NR4A2	0.766754962	0.617	0.251	0	0
3	CD3E	0.764850748	0.518	0.003	0	0
3	ZNF331	0.762300844	0.552	0.126	0	0
3	CD48	0.753935359	0.53	0.028	0	0
3	STK17B	0.751686456	0.538	0.122	0	0
3	ISG20	0.750058839	0.494	0.081	0	0
3	SPOCK2	0.748939863	0.468	0.006	0	0
4	KRT14	1.648690938	1	0.66	0	0
4	KRT15	1.591000869	0.928	0.153	0	0
4	DST	1.388283275	0.91	0.309	0	0
4	S100A2	1.328477235	0.981	0.361	0	0
4	AREG	1.213406429	0.672	0.195	0	0
4	KRT5	1.16855723	1	0.474	0	0
4	COL17A1	1.086465996	0.868	0.122	0	0
4	CCL27	0.821915638	0.655	0.217	0	0
4	SOX15	0.785246059	0.824	0.253	0	0
4	ERRFI1	0.78116934	0.711	0.267	0	0
4	SERPIN2	0.7580056	0.713	0.302	0	0
4	RPLP1	0.730798555	1	1	0	0
4	ADRB2	0.718197916	0.681	0.23	0	0
4	HOPX	0.710313226	0.871	0.37	0	0
4	SYT8	0.70154934	0.556	0.077	0	0
4	DNAJA1	0.697824609	0.96	0.824	0	0
4	KLF5	0.689747596	0.908	0.466	0	0
4	IL18	0.644031178	0.718	0.184	0	0
4	FGFBP1	0.628090996	0.562	0.172	0	0
4	HSPA2	0.627514215	0.748	0.357	0	0
4	ARL4A	0.603399912	0.695	0.279	0	0
4	CKS2	0.586938147	0.764	0.451	0	0
4	TGFBI	0.586006822	0.716	0.264	0	0
4	ATP1B3	0.580029377	0.945	0.632	0	0
4	PMAIP1	0.576823684	0.699	0.276	0	0
4	SFN	0.57304413	1	0.674	0	0
4	FBXW7	0.546919241	0.688	0.23	0	0
4	TOB1	0.545247017	0.765	0.429	0	0
4	ALDH3A1	0.54057311	0.563	0.107	0	0
4	AMD1	0.54042605	0.828	0.564	0	0
4	ZC3H12A	0.537845052	0.76	0.433	0	0
4	AQP3	0.534542332	0.958	0.529	0	0
4	ANKRD37	0.53357321	0.473	0.162	0	0
4	CXADR	0.530599713	0.708	0.232	0	0
4	TGIF1	0.530323256	0.72	0.366	0	0
4	DUSP14	0.517176098	0.586	0.185	0	0
4	MT1X	0.511160256	0.959	0.742	0	0
4	FAM213A	0.490734948	0.69	0.265	0	0
4	NPM1	0.488937694	0.996	0.952	0	0
4	POSTN	0.488057662	0.752	0.186	0	0
4	C19orf33	0.472433768	0.789	0.329	0	0
4	CBR1	0.47084275	0.719	0.348	0	0
4	TIPARP	0.466064569	0.61	0.225	0	0
4	TACSTD2	0.460989052	0.902	0.527	0	0
4	HSP90AA1	0.546022259	0.995	0.97	6.57E-295	1.56E-290
4	KLF4	0.473572069	0.92	0.734	1.80E-288	4.29E-284
4	H2AFZ	0.495993611	0.955	0.823	7.39E-286	1.76E-281

4	MYC	0.495912897	0.897	0.696	3.77E-259	8.96E-255
4	ARID5B	0.591231584	0.768	0.604	1.02E-204	2.43E-200
4	DDX5	0.482252127	0.967	0.934	1.89E-189	4.50E-185
5	KRT2	3.43048635	0.976	0.301	0	0
5	KRTDAP	2.704584157	0.999	0.419	0	0
5	SBSN	2.399388647	0.992	0.264	0	0
5	CALML5	2.368178091	0.845	0.148	0	0
5	KRT10	2.131580525	1	0.849	0	0
5	DMKN	2.028034623	1	0.596	0	0
5	SLURP1	1.972533363	0.473	0.022	0	0
5	SPRR1B	1.910948157	0.611	0.048	0	0
5	FABP5	1.897551024	0.982	0.517	0	0
5	LYPD3	1.863607981	0.989	0.435	0	0
5	CSTA	1.812916987	0.901	0.236	0	0
5	LGALS7B	1.579278324	0.996	0.513	0	0
5	KRT1	1.568828695	0.993	0.566	0	0
5	SFN	1.513497596	1	0.674	0	0
5	PERP	1.508377635	1	0.7	0	0
5	TMEM45A	1.488439962	0.849	0.275	0	0
5	SPINK5	1.436375023	0.675	0.127	0	0
5	TACSTD2	1.396858933	0.98	0.523	0	0
5	DSP	1.386318542	0.939	0.472	0	0
5	CLDN4	1.368638517	0.791	0.181	0	0
5	CALML3	1.312252444	0.812	0.155	0	0
5	PKP1	1.273528712	0.837	0.219	0	0
5	LY6D	1.25628503	0.984	0.479	0	0
5	SERPINB2	1.227742289	0.685	0.303	0	0
5	DSG1	1.213189831	0.804	0.185	0	0
5	PHLDA2	1.195692715	0.918	0.495	0	0
5	CTNBP1	1.190102954	0.866	0.254	0	0
5	IVL	1.152325785	0.529	0.031	0	0
5	CLDN1	1.147142142	0.767	0.195	0	0
5	DSC1	1.122811782	0.723	0.093	0	0
5	LGALS7	1.112582671	0.61	0.251	0	0
5	KLK11	1.085109551	0.837	0.194	0	0
5	TUBA4A	1.067574938	0.906	0.425	0	0
5	SERPINB5	1.063029706	0.909	0.362	0	0
5	JUP	1.061303254	0.85	0.316	0	0
5	SLPI	1.056407018	0.731	0.161	0	0
5	SERPINA12	1.023664391	0.405	0.032	0	0
5	SCEL	1.006779178	0.593	0.055	0	0
5	S100A14	1.003864909	0.995	0.519	0	0
5	SULT2B1	0.971492301	0.631	0.061	0	0
5	GLTP	0.969981176	0.795	0.235	0	0
5	DAPL1	0.969707148	0.83	0.249	0	0
5	EMP2	0.942197265	0.876	0.551	0	0
5	CLIC3	0.939146088	0.467	0.054	0	0
5	SDC1	0.935417808	0.756	0.211	0	0
5	TRIM29	0.92544599	0.797	0.259	0	0
5	AQP3	0.898462333	0.964	0.528	0	0
5	LGALSL	0.883523194	0.651	0.172	0	0
5	DEFB1	0.883003128	0.788	0.175	0	0
5	RAB25	0.881209309	0.771	0.17	0	0
6	APOD	2.614537313	0.991	0.344	0	0
6	GSN	2.539012038	1	0.732	0	0
6	CFD	2.511711285	0.993	0.463	0	0
6	MGP	2.397535339	0.998	0.472	0	0
6	PLA2G2A	2.308252841	0.684	0.039	0	0
6	CFH	1.813943248	0.968	0.19	0	0
6	IGFBP6	1.712808077	0.869	0.132	0	0
6	C3	1.671982173	0.904	0.086	0	0
6	CCDC80	1.564995146	0.993	0.318	0	0
6	CXCL12	1.544201794	0.982	0.296	0	0
6	DCN	1.532661736	0.999	0.545	0	0

6	C1S	1.431402467	0.991	0.326	0	0
6	SERPING1	1.430603559	0.991	0.405	0	0
6	SERPINF1	1.42298889	0.991	0.363	0	0
6	C1R	1.403035056	0.989	0.369	0	0
6	CLU	1.382381505	0.794	0.338	0	0
6	GPC3	1.370354996	0.821	0.066	0	0
6	EFEMP1	1.344282586	0.927	0.18	0	0
6	ITM2A	1.337364332	0.899	0.208	0	0
6	CXCL14	1.33672075	0.973	0.755	0	0
6	ADH1B	1.307191101	0.823	0.091	0	0
6	GPX3	1.295192276	0.747	0.166	0	0
6	MYOC	1.259592778	0.504	0.011	0	0
6	FBLN1	1.241422468	0.972	0.286	0	0
6	C7	1.199410325	0.583	0.037	0	0
6	THY1	1.15230411	0.842	0.191	0	0
6	SOD3	1.136079722	0.982	0.375	0	0
6	LUM	1.129435238	0.968	0.282	0	0
6	SRPX	1.11429259	0.832	0.151	0	0
6	TIMP1	1.086451851	0.952	0.574	0	0
6	APOE	1.085915822	0.888	0.654	0	0
6	WISP2	1.057708904	0.776	0.12	0	0
6	MFAP4	1.043067205	0.919	0.252	0	0
6	S100A13	1.042319532	0.958	0.404	0	0
6	NTRK2	1.037133333	0.825	0.174	0	0
6	PLAC9	1.030817516	0.96	0.34	0	0
6	FBLN2	1.001417339	0.924	0.196	0	0
6	COL6A2	0.993982017	0.998	0.486	0	0
6	PCOLCE	0.961050395	0.95	0.298	0	0
6	RARRES2	0.960080998	0.85	0.171	0	0
6	IGFBP3	0.947312877	0.623	0.098	0	0
6	CYGB	0.94550351	0.765	0.118	0	0
6	LGALS3BP	0.943755045	0.838	0.192	0	0
6	IGFBP4	0.933009435	0.947	0.466	0	0
6	MFAP5	0.928073927	0.705	0.099	0	0
6	LSP1	0.926165522	0.87	0.272	0	0
6	MGST1	0.920467035	0.739	0.109	0	0
6	SPON2	0.917740924	0.674	0.15	0	0
6	VIM	0.907827263	1	0.701	0	0
6	SELENOP	0.888907996	0.963	0.622	0	0
7	CCL19	2.507691313	0.567	0.034	0	0
7	CXCL12	2.334091646	0.993	0.296	0	0
7	PTGDS	2.232090718	0.937	0.24	0	0
7	APOE	2.048365704	0.928	0.652	0	0
7	C1S	1.607610573	0.985	0.326	0	0
7	CXCL14	1.579777225	0.984	0.755	0	0
7	CFH	1.495749474	0.953	0.191	0	0
7	C3	1.489182989	0.783	0.092	0	0
7	CCDC80	1.470283806	0.983	0.319	0	0
7	CFD	1.455575829	0.989	0.463	0	0
7	C1R	1.432962358	0.981	0.37	0	0
7	SERPING1	1.384295289	0.985	0.405	0	0
7	APOD	1.369861474	0.982	0.344	0	0
7	DCN	1.363335456	1	0.545	0	0
7	IGFBP7	1.337845763	0.999	0.634	0	0
7	SERPINF1	1.308734084	0.979	0.364	0	0
7	SOD3	1.287018272	0.97	0.376	0	0
7	MGP	1.244209756	0.961	0.474	0	0
7	PTN	1.17448257	0.759	0.125	0	0
7	FBLN1	1.17190776	0.917	0.288	0	0
7	RARRES2	1.111630039	0.848	0.171	0	0
7	GSN	1.084768677	0.993	0.732	0	0
7	COL6A2	1.081735947	0.991	0.487	0	0
7	THY1	1.052103328	0.836	0.191	0	0
7	TIMP1	1.048359734	0.979	0.573	0	0

7	CST3	1.034273139	1	0.789	0	0
7	NNMT	1.024829112	0.871	0.262	0	0
7	DPT	1.017026355	0.84	0.148	0	0
7	SFRP2	1.012795398	0.774	0.143	0	0
7	VCAN	1.01036942	0.807	0.135	0	0
7	S100A13	1.000288656	0.931	0.405	0	0
7	PCOLCE	0.997206945	0.944	0.298	0	0
7	C7	0.97438554	0.403	0.045	0	0
7	CLU	0.937947947	0.741	0.341	0	0
7	ADH1B	0.932767231	0.671	0.098	0	0
7	EFEMP1	0.927545422	0.799	0.186	0	0
7	TMEM176B	0.925167124	0.792	0.131	0	0
7	CTSK	0.897020961	0.91	0.188	0	0
7	SELENOM	0.896786523	0.957	0.469	0	0
7	IL11RA	0.894212166	0.756	0.132	0	0
7	CYGB	0.886259352	0.654	0.123	0	0
7	MFAP4	0.884217527	0.838	0.256	0	0
7	PLAC9	0.877946022	0.935	0.342	0	0
7	PLPP3	0.860803234	0.812	0.227	0	0
7	S100A6	0.85745797	1	0.82	0	0
7	VIM	0.844200461	1	0.701	0	0
7	FBLN2	0.823003212	0.864	0.199	0	0
7	IFITM3	0.822635588	0.998	0.752	0	0
7	MEG3	0.808328762	0.716	0.166	0	0
7	COL6A1	0.802259016	0.964	0.416	0	0
8	KRT14	2.375096239	1	0.661	0	0
8	KRT5	2.040354148	1	0.476	0	0
8	S100A2	1.654312808	0.989	0.363	0	0
8	COL17A1	1.458361408	0.919	0.122	0	0
8	DST	1.347181476	0.908	0.311	0	0
8	HOPX	0.965809482	0.94	0.368	0	0
8	AQP3	0.938553774	0.99	0.528	0	0
8	SYT8	0.853538014	0.644	0.075	0	0
8	KRT15	0.840467058	0.762	0.163	0	0
8	SOX15	0.800020666	0.834	0.254	0	0
8	FAM213A	0.780140503	0.822	0.261	0	0
8	MT1X	0.766107775	0.944	0.744	0	0
8	AREG	0.76529134	0.556	0.201	0	0
8	KLF5	0.757706213	0.919	0.467	0	0
8	SERPINB2	0.726692805	0.668	0.305	0	0
8	ERRFI1	0.715454694	0.669	0.271	0	0
8	PERP	0.696101194	0.999	0.701	0	0
8	CCL27	0.695638618	0.612	0.221	0	0
8	TGFBI	0.688142229	0.749	0.264	0	0
8	ATP1B3	0.684333545	0.959	0.633	0	0
8	IMPA2	0.668638142	0.786	0.232	0	0
8	FBXW7	0.666910118	0.743	0.229	0	0
8	SPINT2	0.658155373	0.898	0.377	0	0
8	SFN	0.657792876	1	0.675	0	0
8	IL18	0.630106234	0.696	0.186	0	0
8	C19orf33	0.627270562	0.833	0.328	0	0
8	PDLIM1	0.615374936	0.864	0.459	0	0
8	CXADR	0.606417677	0.749	0.232	0	0
8	FGFBP1	0.605953853	0.527	0.175	0	0
8	ADRB2	0.60087999	0.647	0.232	0	0
8	PKM	0.598072332	0.969	0.814	0	0
8	CBR1	0.588971488	0.775	0.347	0	0
8	TOB1	0.583794437	0.774	0.43	0	0
8	FXYD3	0.577326421	0.952	0.47	0	0
8	LGALS7	0.574149569	0.748	0.246	0	0
8	ALDH3A1	0.572260663	0.533	0.109	0	0
8	HSPA2	0.571973537	0.765	0.358	0	0
8	NDFIP2	0.535845035	0.723	0.235	0	0
8	FGFR3	0.531755184	0.64	0.153	0	0

8	ARL4A	0.531378004	0.667	0.281	0	0
8	CXCL14	0.528882483	0.994	0.755	0	0
8	PMAIP1	0.526170325	0.687	0.278	0	0
8	S100A14	0.524080391	0.948	0.523	0	0
8	DEGS1	0.522327871	0.864	0.496	0	0
8	SERPINB5	0.51985538	0.842	0.367	0	0
8	DUSP14	0.518619233	0.586	0.186	0	0
8	DNAJA1	0.631091106	0.919	0.826	9.88E-275	2.35E-270
8	HSP90AA1	0.54331514	0.991	0.97	5.92E-248	1.41E-243
8	MT1E	0.531942493	0.736	0.458	9.82E-236	2.34E-231
8	CKS2	0.526633232	0.695	0.455	1.35E-209	3.20E-205
9	PTGDS	2.629427691	0.974	0.239	0	0
9	SFRP2	2.555105522	0.965	0.136	0	0
9	COL1A1	2.48125612	1	0.472	0	0
9	COL3A1	2.329857121	0.996	0.373	0	0
9	COL1A2	2.311622744	1	0.46	0	0
9	COMP	2.224628281	0.709	0.061	0	0
9	COL6A1	2.150439892	1	0.415	0	0
9	COL6A2	1.989768633	1	0.487	0	0
9	SPARC	1.828772992	0.998	0.584	0	0
9	MMP2	1.770070909	0.974	0.23	0	0
9	DCN	1.659366902	0.991	0.546	0	0
9	CTSK	1.553272495	0.934	0.188	0	0
9	IGFBP4	1.540056401	0.958	0.466	0	0
9	APCDD1	1.42788231	0.82	0.169	0	0
9	LGALS1	1.395256356	1	0.661	0	0
9	HTRA1	1.389253643	0.945	0.253	0	0
9	PCOLCE	1.388159875	0.961	0.299	0	0
9	ELN	1.370653924	0.841	0.14	0	0
9	CTHRC1	1.35371438	0.812	0.159	0	0
9	TWIST2	1.340799482	0.902	0.125	0	0
9	C1R	1.339071515	0.968	0.371	0	0
9	FBLN1	1.316650221	0.87	0.291	0	0
9	COL6A3	1.289819184	0.915	0.186	0	0
9	NBL1	1.275428299	0.899	0.529	0	0
9	SERPINF1	1.248713716	0.962	0.366	0	0
9	C1S	1.239758414	0.966	0.328	0	0
9	WISP2	1.232369238	0.666	0.126	0	0
9	POSTN	1.22728652	0.57	0.196	0	0
9	LUM	1.210869944	0.891	0.286	0	0
9	COL5A1	1.202207001	0.86	0.108	0	0
9	MFAP4	1.194144903	0.915	0.254	0	0
9	AEBP1	1.191232194	0.919	0.224	0	0
9	FBLN2	1.175450645	0.92	0.197	0	0
9	S100A6	1.167292614	1	0.82	0	0
9	MEG3	1.165047457	0.905	0.158	0	0
9	FSTL1	1.164323538	0.906	0.241	0	0
9	TIMP2	1.154324068	0.924	0.264	0	0
9	PTN	1.152287521	0.743	0.127	0	0
9	THBS2	1.146794273	0.832	0.139	0	0
9	STC2	1.131037201	0.568	0.037	0	0
9	MXRA8	1.123466812	0.877	0.185	0	0
9	PLPP3	1.112605914	0.846	0.226	0	0
9	CLEC11A	1.099573289	0.834	0.163	0	0
9	MMP11	1.085912139	0.416	0.033	0	0
9	CXCL14	1.041623459	0.969	0.756	0	0
9	SOD3	1.034971903	0.943	0.378	0	0
9	PPIC	1.030697558	0.864	0.234	0	0
9	CFD	1.028088832	0.896	0.468	0	0
9	TIMP1	1.025606524	0.992	0.573	0	0
9	THY1	1.020223032	0.842	0.192	0	0
10	S100A14	1.066249857	0.994	0.523	0	0
10	DMKN	1.060263314	0.996	0.599	0	0
10	LY6D	1.048729284	0.991	0.483	0	0

10	MT1X	0.988720023	0.986	0.743	0	0
10	SFN	0.937523076	1	0.677	0	0
10	KRT5	0.913997598	0.89	0.483	0	0
10	KRT1	0.908361771	0.987	0.57	0	0
10	LGALS7B	0.86883037	0.976	0.518	0	0
10	KRT10	0.818181832	0.996	0.85	0	0
10	DSP	0.814236169	0.971	0.474	0	0
10	PERP	0.806948795	1	0.702	0	0
10	AQP3	0.71593941	0.982	0.531	0	0
10	DSC3	0.692882839	0.884	0.343	0	0
10	RPLP1	0.673184117	1	1	0	0
10	LGALS7	0.654505775	0.608	0.254	0	0
10	TACSTD2	0.641848983	0.941	0.528	0	0
10	KLF5	0.640710829	0.93	0.469	0	0
10	LYPD3	0.624847274	0.913	0.443	0	0
10	SOX15	0.599384526	0.765	0.26	0	0
10	RPS19	0.573820201	1	1	0	0
10	RPLP0	0.572627518	1	0.999	0	0
10	RPS18	0.572279228	1	1	0	0
10	FXYD3	0.567855769	0.943	0.473	0	0
10	SERPINB2	0.562373134	0.716	0.305	0	0
10	RHOV	0.554689266	0.678	0.178	0	0
10	RPS2	0.539921847	1	1	0	0
10	SERPINB5	0.52870134	0.838	0.369	0	0
10	EEF1B2	0.520377455	0.992	0.957	0	0
10	RPS8	0.516306785	1	1	0	0
10	RPS7	0.506782289	1	0.999	0	0
10	CCL27	0.504616366	0.656	0.221	0	0
10	HMGA1	0.502399775	0.713	0.291	0	0
10	RPL18	0.497467364	1	0.999	0	0
10	IRF6	0.491613218	0.665	0.224	0	0
10	TRIM29	0.489777312	0.767	0.264	0	0
10	PKP1	0.488449346	0.75	0.227	0	0
10	MT1G	0.483408695	0.443	0.09	0	0
10	RPL7A	0.475407704	1	0.999	0	0
10	RPS12	0.472965466	1	1	0	0
10	RPS3A	0.467355374	1	0.999	0	0
10	RPS6	0.464357725	1	1	0	0
10	TENT5B	0.464321841	0.618	0.22	0	0
10	DEFB1	0.461888849	0.665	0.184	0	0
10	FGFBP1	0.460817878	0.515	0.178	0	0
10	RPL18A	0.460618958	1	1	0	0
10	RPL10A	0.459807332	1	0.999	0	0
10	RPS10	0.457020158	1	0.994	0	0
10	PHLDA2	0.607423604	0.825	0.501	1.68E-302	4.00E-298
10	KRT14	0.619586842	0.884	0.668	1.65E-289	3.94E-285
10	MYC	0.479811543	0.904	0.697	7.37E-215	1.75E-210
11	KRT1	2.029778588	0.999	0.571	0	0
11	KRT10	1.804417889	1	0.85	0	0
11	DMKN	1.663715507	1	0.6	0	0
11	LY6D	1.339929858	0.997	0.484	0	0
11	KRTDAP	1.328774567	0.976	0.427	0	0
11	LGALS7B	1.324971796	0.995	0.519	0	0
11	PERP	1.200354399	0.999	0.703	0	0
11	LGALS7	1.194203878	0.776	0.25	0	0
11	DSP	1.060472113	0.963	0.476	0	0
11	MT1X	0.929056627	0.982	0.744	0	0
11	DEGS1	0.898081254	0.947	0.496	0	0
11	PKP1	0.894292202	0.852	0.226	0	0
11	DEFB1	0.838437711	0.827	0.18	0	0
11	JUP	0.811171627	0.896	0.321	0	0
11	FXYD3	0.810294598	0.962	0.474	0	0
11	DSC3	0.807109193	0.91	0.344	0	0
11	S100A14	0.795939223	0.991	0.525	0	0

11	CCL27	0.761132674	0.807	0.217	0	0
11	DSG1	0.735209206	0.814	0.192	0	0
11	SFN	0.730300749	0.999	0.678	0	0
11	RHOV	0.728413346	0.743	0.177	0	0
11	AQP3	0.680475411	0.981	0.533	0	0
11	NSG1	0.67564105	0.775	0.189	0	0
11	TRIM29	0.667559919	0.813	0.264	0	0
11	CTNNBIP1	0.647208236	0.8	0.263	0	0
11	KLK11	0.644563686	0.766	0.203	0	0
11	RPS18	0.632972912	1	1	0	0
11	CCND1	0.62938388	0.797	0.407	0	0
11	CSTA	0.61202543	0.807	0.247	0	0
11	GJA1	0.611790353	0.793	0.352	0	0
11	KCNK7	0.604066033	0.675	0.121	0	0
11	SBSN	0.603247573	0.882	0.276	0	0
11	S100A16	0.591935888	0.922	0.591	0	0
11	KRT2	0.585579314	0.757	0.316	0	0
11	RPLP1	0.580549212	1	1	0	0
11	ALDH2	0.579592969	0.797	0.413	0	0
11	CHP2	0.575583264	0.599	0.077	0	0
11	C19orf33	0.568016069	0.781	0.334	0	0
11	SDC1	0.567212312	0.723	0.219	0	0
11	GATA3	0.560667701	0.644	0.156	0	0
11	DAPL1	0.553448647	0.768	0.258	0	0
11	PKP3	0.55118319	0.732	0.22	0	0
11	RAB25	0.550940989	0.686	0.18	0	0
11	DBI	0.550277307	0.96	0.747	0	0
11	RPS19	0.54338758	1	1	0	0
11	NUPR1	0.542437505	0.937	0.677	0	0
11	OVOL1	0.514405259	0.558	0.177	0	0
11	GLTP	0.513449961	0.706	0.245	0	0
11	GATM	0.513269284	0.591	0.146	0	0
11	HES1	0.578920734	0.809	0.594	1.48E-167	3.52E-163
12	SELE	2.812319037	0.881	0.023	0	0
12	ACKR1	2.695230967	0.952	0.046	0	0
12	TM4SF1	2.667600623	0.999	0.274	0	0
12	IL6	2.417747032	0.871	0.114	0	0
12	AQP1	1.831170847	0.987	0.178	0	0
12	IFI27	1.768969797	0.999	0.461	0	0
12	PLVAP	1.748141838	0.971	0.056	0	0
12	SPARCL1	1.620922136	0.995	0.331	0	0
12	C2CD4B	1.612474323	0.799	0.027	0	0
12	G0S2	1.527314278	0.545	0.079	0	0
12	CD74	1.519176373	0.995	0.354	0	0
12	PECAM1	1.446149513	0.946	0.072	0	0
12	ICAM1	1.386324292	0.916	0.181	0	0
12	GNG11	1.360813885	0.975	0.246	0	0
12	PCAT19	1.351234555	0.923	0.055	0	0
12	NPDC1	1.341677909	0.93	0.166	0	0
12	RCAN1	1.323538247	0.83	0.119	0	0
12	SOCS3	1.286422556	0.922	0.589	0	0
12	STC1	1.27971246	0.487	0.016	0	0
12	CLDN5	1.27901333	0.83	0.067	0	0
12	CSF3	1.275658199	0.6	0.01	0	0
12	RAMP2	1.2707616	0.922	0.12	0	0
12	LMCD1	1.269314431	0.896	0.124	0	0
12	VWF	1.249534866	0.877	0.057	0	0
12	RAMP3	1.2441465	0.862	0.055	0	0
12	TMEM70	1.238345912	0.825	0.176	0	0
12	TSC22D1	1.235999099	0.882	0.519	0	0
12	HLA-DRB1	1.215394482	0.982	0.182	0	0
12	HLA-E	1.210661379	0.999	0.88	0	0
12	ECSCR	1.196672607	0.895	0.059	0	0
12	ADGRL4	1.161329784	0.896	0.05	0	0

12	ADAMTS9	1.149783406	0.757	0.058	0	0
12	IFIT1	1.149399189	0.572	0.06	0	0
12	CCL14	1.131431489	0.791	0.033	0	0
12	BCAM	1.128591951	0.951	0.189	0	0
12	A2M	1.119518108	0.91	0.176	0	0
12	NFKBIA	1.117502763	0.998	0.889	0	0
12	RND1	1.116409627	0.77	0.057	0	0
12	PDLIM1	1.115542841	0.955	0.46	0	0
12	ENG	1.112888142	0.872	0.133	0	0
12	CAV1	1.111128591	0.981	0.649	0	0
12	SDCBP	1.103003995	0.976	0.536	0	0
12	EMCN	1.089663483	0.877	0.081	0	0
12	CLU	1.083455382	0.873	0.341	0	0
12	CTGF	1.067192071	0.787	0.25	0	0
12	SOX17	1.066554659	0.608	0.029	0	0
12	ADAMTS1	1.050866311	0.804	0.229	0	0
12	CNKS3	1.037758288	0.74	0.059	0	0
12	SPRY1	1.028365933	0.765	0.226	0	0
12	TSPAN7	1.020908686	0.825	0.052	0	0
13	ACTA2	2.677973679	0.999	0.165	0	0
13	TAGLN	2.538114748	1	0.278	0	0
13	MYL9	2.302821611	1	0.446	0	0
13	ADIRF	2.111703558	1	0.624	0	0
13	TPM2	2.105591867	0.994	0.209	0	0
13	RERGL	1.931366368	0.887	0.028	0	0
13	DSTN	1.767856407	0.999	0.916	0	0
13	PLN	1.766352482	0.878	0.038	0	0
13	MYH11	1.711271485	0.926	0.06	0	0
13	SNCG	1.494481991	0.836	0.122	0	0
13	BCAM	1.445275244	0.935	0.191	0	0
13	PPP1R14A	1.378551821	0.827	0.092	0	0
13	SPARCL1	1.372888246	0.971	0.333	0	0
13	TPM1	1.348917088	0.923	0.34	0	0
13	SORBS2	1.344946262	0.823	0.069	0	0
13	GADD45B	1.335851144	0.934	0.712	0	0
13	CSRP1	1.286998046	0.85	0.246	0	0
13	CALD1	1.246896193	0.984	0.57	0	0
13	LBH	1.241922578	0.865	0.177	0	0
13	MFGE8	1.24041151	0.93	0.351	0	0
13	RGS16	1.23993407	0.696	0.306	0	0
13	TINAGL1	1.228376884	0.897	0.137	0	0
13	IGFBP7	1.228296227	1	0.639	0	0
13	CRIP1	1.171769931	0.948	0.577	0	0
13	IGFBP5	1.146784596	0.869	0.223	0	0
13	NET1	1.136210466	0.78	0.157	0	0
13	C11orf96	1.097472934	0.828	0.178	0	0
13	CNN1	1.090852443	0.71	0.046	0	0
13	S100A4	1.079755405	0.993	0.668	0	0
13	FLNA	1.058021775	0.869	0.35	0	0
13	SOD3	1.045863808	0.957	0.384	0	0
13	CAVIN3	1.017434031	0.886	0.334	0	0
13	MCAM	1.001000036	0.773	0.106	0	0
13	ACTB	0.990930998	1	0.995	0	0
13	SELENOM	0.985484634	0.932	0.476	0	0
13	CCDC3	0.980460796	0.795	0.218	0	0
13	NDUFA4	0.960174897	0.987	0.874	0	0
13	CPE	0.939156551	0.895	0.239	0	0
13	CSRP2	0.91080527	0.73	0.203	0	0
13	CD151	0.904155931	0.846	0.43	0	0
13	SH3BGRL	0.902017669	0.893	0.494	0	0
13	LMOD1	0.893156336	0.689	0.065	0	0
13	MYLK	0.858403181	0.806	0.13	0	0
13	TSC22D1	0.856114774	0.896	0.519	0	0
13	CLU	0.853865301	0.838	0.343	0	0

13	RRAD	0.852377648	0.604	0.084	0	0
13	VIM	0.837564406	1	0.705	0	0
13	JUN	1.065365015	0.955	0.858	4.29E-269	1.02E-264
13	ATF3	0.990393482	0.741	0.554	1.66E-197	3.94E-193
13	JUNB	0.923130375	0.981	0.961	8.69E-192	2.07E-187
14	CCL3	3.057109268	0.7	0.026	0	0
14	CXCL8	2.776400337	0.789	0.087	0	0
14	RNASE1	2.731065487	0.852	0.085	0	0
14	C1QA	2.517137573	0.902	0.016	0	0
14	CXCL3	2.493605157	0.768	0.12	0	0
14	CCL4	2.434860484	0.603	0.027	0	0
14	FTL	2.350482026	1	0.97	0	0
14	CXCL2	2.162086665	0.815	0.191	0	0
14	CCL3L1	2.124775588	0.497	0.014	0	0
14	TYROBP	2.081390253	0.921	0.052	0	0
14	C1QB	1.971016476	0.794	0.01	0	0
14	HLA-DRA	1.919475946	0.954	0.221	0	0
14	IL1B	1.873075916	0.523	0.031	0	0
14	C1QC	1.852305037	0.8	0.01	0	0
14	GPR183	1.815653312	0.725	0.071	0	0
14	AIF1	1.774469156	0.858	0.036	0	0
14	SELENOP	1.743480639	0.951	0.627	0	0
14	CCL4L2	1.712372876	0.381	0.015	0	0
14	HMOX1	1.701518871	0.6	0.052	0	0
14	PLAUR	1.652951738	0.745	0.19	0	0
14	INSIG1	1.625769762	0.741	0.216	0	0
14	CXCL1	1.561510962	0.396	0.064	0	0
14	CCL13	1.520455703	0.418	0.012	0	0
14	MMP9	1.518062975	0.541	0.022	0	0
14	F13A1	1.512589758	0.675	0.042	0	0
14	SRGN	1.5080004	0.849	0.176	0	0
14	FCER1G	1.499377262	0.797	0.048	0	0
14	CD74	1.493648221	0.986	0.356	0	0
14	CTSB	1.487613605	0.784	0.306	0	0
14	CD68	1.487457702	0.727	0.091	0	0
14	HLA-DRB1	1.477415389	0.843	0.188	0	0
14	LGMN	1.443957831	0.692	0.17	0	0
14	FOLR2	1.416106619	0.71	0.006	0	0
14	CD83	1.40164922	0.736	0.107	0	0
14	FTH1	1.395379996	1	0.95	0	0
14	CST3	1.365564078	0.998	0.792	0	0
14	BCL2A1	1.329665893	0.464	0.035	0	0
14	HLA-DPA1	1.324828698	0.783	0.158	0	0
14	MS4A6A	1.236133274	0.671	0.025	0	0
14	PLEK	1.234900433	0.646	0.032	0	0
14	HLA-DPB1	1.227722375	0.788	0.176	0	0
14	CTSL	1.227588647	0.659	0.243	0	0
14	SAT1	1.22521329	0.998	0.787	0	0
14	MS4A7	1.156465439	0.647	0.011	0	0
14	CD14	1.148566397	0.577	0.057	0	0
14	CTSZ	1.121651948	0.692	0.191	0	0
14	IER3	1.105604594	0.98	0.776	0	0
14	LAPTM5	1.10328091	0.663	0.093	0	0
14	CTSC	1.101609868	0.662	0.225	0	0
14	CTSD	1.156265264	0.778	0.495	1.41E-265	3.35E-261
15	HLA-DRA	3.297387094	0.996	0.22	0	0
15	HLA-DPB1	3.242868501	0.984	0.172	0	0
15	LYZ	3.229776492	0.965	0.027	0	0
15	HLA-DRB1	3.098190061	0.987	0.184	0	0
15	HLA-DPA1	2.994071639	0.979	0.153	0	0
15	CD74	2.954300571	0.998	0.356	0	0
15	CXCL8	2.861779523	0.833	0.087	0	0
15	G0S2	2.828201695	0.745	0.075	0	0
15	HLA-DQA1	2.806684774	0.955	0.076	0	0

15	HLA-DQB1	2.743052044	0.962	0.115	0	0
15	IL1B	2.550244952	0.772	0.024	0	0
15	SRGN	2.344776928	0.947	0.174	0	0
15	GPR183	2.122127102	0.847	0.068	0	0
15	FCER1A	2.119045548	0.803	0.013	0	0
15	INSIG1	2.045886711	0.859	0.214	0	0
15	C15orf48	1.975722785	0.728	0.03	0	0
15	BCL2A1	1.899470622	0.798	0.026	0	0
15	TYROBP	1.880973817	0.94	0.053	0	0
15	CST3	1.853602613	0.997	0.792	0	0
15	SAT1	1.839121122	0.989	0.788	0	0
15	PLAUR	1.831938401	0.895	0.186	0	0
15	LST1	1.79832816	0.927	0.029	0	0
15	CD83	1.782532544	0.864	0.104	0	0
15	COTL1	1.755993406	0.948	0.164	0	0
15	CXCL3	1.727904853	0.505	0.128	0	0
15	FCER1G	1.688750527	0.893	0.047	0	0
15	HLA-DMA	1.592604607	0.923	0.103	0	0
15	AIF1	1.540011422	0.9	0.036	0	0
15	PLEK	1.537494536	0.842	0.027	0	0
15	CLEC10A	1.528415242	0.764	0.009	0	0
15	FTH1	1.459511885	1	0.95	0	0
15	CPVL	1.415797042	0.741	0.052	0	0
15	BIRC3	1.372117149	0.781	0.156	0	0
15	RGS2	1.362943523	0.741	0.182	0	0
15	REL	1.361847644	0.898	0.425	0	0
15	HLA-DRB5	1.353177853	0.273	0.038	0	0
15	CD1C	1.337959744	0.666	0.003	0	0
15	CCR7	1.29133497	0.422	0.018	0	0
15	SERPINB9	1.286042099	0.733	0.069	0	0
15	HLA-DMB	1.279460306	0.814	0.05	0	0
15	RGS1	1.270100393	0.573	0.042	0	0
15	LGALS2	1.253935085	0.709	0.004	0	0
15	CYBA	1.23291901	0.95	0.323	0	0
15	TMSB4X	1.228153614	1	0.993	0	0
15	NAMPT	1.205391297	0.877	0.455	0	0
15	DUSP2	1.199907988	0.797	0.176	0	0
15	CXCL2	1.190111592	0.573	0.199	0	0
15	EMP3	1.178459385	0.931	0.4	0	0
15	CCL3	1.120609773	0.348	0.037	0	0
15	ID2	1.133108692	0.836	0.596	2.81E-296	6.68E-292
16	POSTN	1.248631345	0.65	0.2	0	0
16	COL1A1	1.173927063	0.961	0.482	0	0
16	COL1A2	1.165962865	0.961	0.469	0	0
16	COL6A2	1.000339441	0.958	0.496	0	0
16	LUM	0.971908548	0.869	0.296	0	0
16	GPC3	0.963260415	0.508	0.087	0	0
16	MFAP4	0.962412568	0.782	0.267	0	0
16	HTRA1	0.960727541	0.746	0.269	0	0
16	TNMD	0.94718035	0.333	0.029	0	0
16	LGALS1	0.916727687	0.986	0.666	0	0
16	ASPN	0.900795006	0.51	0.109	0	0
16	COL6A1	0.870320187	0.9	0.427	0	0
16	MEG3	0.861717631	0.681	0.176	0	0
16	COL3A1	0.828679889	0.882	0.386	0	0
16	PTN	0.782991699	0.591	0.141	0	0
16	MFAP5	0.781750202	0.528	0.114	0	0
16	COL6A3	0.724336701	0.666	0.204	0	0
16	DPT	0.683592311	0.62	0.165	0	0
16	VCAN	0.636945131	0.565	0.153	0	0
16	COL11A1	0.62865461	0.29	0.013	0	0
16	TNN	0.602159482	0.313	0.012	0	0
16	F2R	0.596571732	0.499	0.139	0	0
16	MXRA8	0.592916604	0.666	0.201	0	0

16	TMEM119	0.548047127	0.412	0.094	0	0
16	MMP2	0.54773998	0.771	0.247	0	0
16	DCN	0.532042624	0.984	0.553	0	0
16	EDNRA	0.523187895	0.37	0.05	0	0
16	LAMC3	0.50353163	0.357	0.041	0	0
16	SPARC	0.942748645	0.935	0.592	2.48E-303	5.91E-299
16	PCOLCE	0.583386563	0.764	0.314	5.26E-292	1.25E-287
16	CD99	0.651234151	0.949	0.698	3.48E-290	8.29E-286
16	PRELP	0.613778291	0.444	0.13	4.06E-270	9.66E-266
16	11-Sep	0.471962379	0.48	0.172	2.42E-227	5.77E-223
16	PRRX1	0.477374157	0.555	0.215	2.08E-220	4.94E-216
16	DKK3	0.500912022	0.481	0.181	4.21E-215	1.00E-210
16	MDK	0.550947263	0.489	0.186	8.99E-209	2.14E-204
16	LAPT4A	0.493950797	0.989	0.898	2.83E-199	6.74E-195
16	C6orf48	0.580028713	0.814	0.606	9.80E-199	2.33E-194
16	ZBTB20	0.55353145	0.602	0.297	9.00E-194	2.14E-189
16	SELENOP	0.486851514	0.882	0.63	1.14E-193	2.72E-189
16	VIM	0.588182575	0.988	0.707	1.40E-183	3.34E-179
16	S100A6	0.503844507	0.997	0.823	6.33E-177	1.51E-172
16	TCF4	0.521257409	0.633	0.329	1.56E-174	3.72E-170
16	PRSS23	0.509880318	0.472	0.188	4.59E-173	1.09E-168
16	SOD3	0.534966926	0.735	0.392	6.05E-172	1.44E-167
16	CTGF	0.525562419	0.533	0.26	1.11E-124	2.63E-120
16	BGN	0.695078526	0.586	0.332	1.31E-124	3.12E-120
16	IGFBP6	0.624421172	0.382	0.158	1.93E-112	4.59E-108
16	MRPS6	0.483999873	0.501	0.326	1.19E-74	2.83E-70
16	HES1	0.47283778	0.745	0.597	1.38E-48	3.28E-44
17	ACKR1	1.766103545	0.723	0.058	0	0
17	PLVAP	1.61176759	0.849	0.066	0	0
17	AQP1	1.583184894	0.885	0.187	0	0
17	GNG11	1.458884568	0.923	0.253	0	0
17	SPARCL1	1.454809771	0.951	0.338	0	0
17	IFI27	1.417851085	0.992	0.466	0	0
17	CD74	1.298284657	0.965	0.36	0	0
17	RAMP2	1.285995514	0.821	0.129	0	0
17	RAMP3	1.275758982	0.723	0.065	0	0
17	PECAM1	1.247736754	0.77	0.084	0	0
17	VWF	1.200007989	0.707	0.068	0	0
17	IFITM3	1.178027076	1	0.757	0	0
17	CLDN5	1.126455925	0.685	0.077	0	0
17	ENG	1.11578297	0.748	0.142	0	0
17	ECSCR	1.102680261	0.748	0.069	0	0
17	NPDC1	1.088309724	0.782	0.176	0	0
17	EGFL7	1.084506934	0.75	0.089	0	0
17	A2M	1.000925968	0.747	0.186	0	0
17	TMSB10	0.982875986	1	0.973	0	0
17	GIMAP7	0.972583833	0.642	0.07	0	0
17	EMCN	0.903102846	0.652	0.093	0	0
17	FKBP1A	0.901226444	0.939	0.684	0	0
17	CCL14	0.896230596	0.573	0.044	0	0
17	IGFBP7	0.88554233	0.999	0.641	0	0
17	PCAT19	0.87740258	0.674	0.068	0	0
17	BCAM	0.875588517	0.757	0.2	0	0
17	CRIP2	0.866092115	0.8	0.423	0	0
17	ADGRL4	0.864436331	0.633	0.063	0	0
17	CLEC14A	0.854485069	0.605	0.072	0	0
17	TSPAN7	0.848627472	0.602	0.063	0	0
17	IFITM2	0.831300886	0.935	0.553	0	0
17	TMSB4X	0.828101306	1	0.993	0	0
17	HSPG2	0.827196587	0.672	0.22	0	0
17	HLA-DRB1	0.824406327	0.866	0.191	0	0
17	CD34	0.8242484	0.639	0.138	0	0
17	HLA-E	0.808758533	0.998	0.881	0	0
17	RBP7	0.802318516	0.513	0.083	0	0

17	COL15A1	0.754603631	0.582	0.155	0	0
17	ESAM	0.729726855	0.609	0.111	0	0
17	RNASE1	0.726709016	0.717	0.094	0	0
17	MYL12A	0.718378327	0.985	0.835	0	0
17	TM4SF1	0.709593887	0.813	0.284	0	0
17	SNCG	0.708247433	0.625	0.132	0	0
17	TGFBR2	0.703463129	0.614	0.182	0	0
17	IFITM1	0.708480546	0.678	0.266	4.87E-300	1.16E-295
17	ADIRF	0.775977177	0.952	0.627	1.06E-258	2.51E-254
17	CCDC85B	0.747151365	0.763	0.516	2.92E-248	6.96E-244
17	ID1	0.950430961	0.72	0.4	6.01E-242	1.43E-237
17	TXNIP	0.819719315	0.79	0.523	2.59E-229	6.17E-225
17	CLU	0.997649062	0.613	0.351	2.06E-143	4.91E-139
18	FABP4	3.523489826	0.884	0.123	0	0
18	RBP7	2.583933355	0.914	0.074	0	0
18	CD36	2.207234099	0.843	0.068	0	0
18	GNG11	1.986585467	1	0.252	0	0
18	CLDN5	1.946970212	0.929	0.071	0	0
18	A2M	1.938782139	0.99	0.18	0	0
18	RGS5	1.887271304	0.789	0.078	0	0
18	AQP1	1.808798286	0.961	0.185	0	0
18	IFI27	1.758427389	0.999	0.466	0	0
18	PLVAP	1.712806231	0.92	0.065	0	0
18	SLC9A3R2	1.612989347	0.942	0.151	0	0
18	BST2	1.601024538	0.971	0.195	0	0
18	RAMP2	1.600069032	0.974	0.125	0	0
18	COL4A1	1.553630319	0.889	0.134	0	0
18	PECAM1	1.542484755	0.974	0.079	0	0
18	SPARCL1	1.538765089	0.999	0.337	0	0
18	EGFL7	1.501880732	0.9	0.085	0	0
18	VWF	1.440241399	0.929	0.063	0	0
18	COL4A2	1.408094694	0.909	0.152	0	0
18	TM4SF1	1.338722561	0.98	0.28	0	0
18	COL15A1	1.330883797	0.935	0.147	0	0
18	RAMP3	1.312034859	0.836	0.062	0	0
18	NDUFA4L2	1.308612952	0.771	0.23	0	0
18	CAV1	1.303855922	0.996	0.651	0	0
18	ADGRL4	1.262791533	0.922	0.057	0	0
18	IGFBP7	1.259254085	1	0.641	0	0
18	ESAM	1.245452731	0.948	0.103	0	0
18	ENG	1.214435251	0.933	0.138	0	0
18	MGLL	1.205628183	0.92	0.193	0	0
18	EPAS1	1.184580389	0.953	0.19	0	0
18	CD34	1.180888762	0.922	0.132	0	0
18	VAMP5	1.177230823	0.954	0.265	0	0
18	CRIP2	1.170026122	0.977	0.419	0	0
18	CD300LG	1.151461309	0.63	0.009	0	0
18	TINAGL1	1.137102264	0.935	0.141	0	0
18	ACKR1	1.131304114	0.478	0.064	0	0
18	NPDC1	1.126511703	0.94	0.173	0	0
18	ANGPT2	1.11852182	0.733	0.093	0	0
18	PCAT19	1.115999642	0.906	0.063	0	0
18	TGFBR2	1.093138705	0.919	0.175	0	0
18	CLEC14A	1.084631727	0.852	0.066	0	0
18	IGFBP2	1.077959976	0.91	0.118	0	0
18	FAM241A	1.077368612	0.867	0.153	0	0
18	CD74	1.063710481	0.974	0.36	0	0
18	ECSCR	1.061665993	0.911	0.065	0	0
18	FKBP1A	1.059620124	0.983	0.683	0	0
18	TMSB10	1.055339955	1	0.973	0	0
18	LMCD1	1.036467579	0.864	0.131	0	0
18	TIMP3	1.034182254	0.978	0.386	0	0
18	EMCN	1.030912046	0.898	0.088	0	0
19	AQP5	2.356120258	0.733	0.021	0	0

19	SNORC	2.171497307	0.744	0.015	0	0
19	KRT19	1.885147375	0.679	0.032	0	0
19	GAPDH	1.759623037	1	0.996	0	0
19	ZG16B	1.731288429	0.446	0.057	0	0
19	CA6	1.621725597	0.517	0.007	0	0
19	KRT18	1.599839477	0.645	0.074	0	0
19	KRT7	1.55257752	0.604	0.036	0	0
19	CLDN10	1.488940925	0.471	0.01	0	0
19	KRT8	1.428738655	0.565	0.059	0	0
19	SFRP1	1.398337262	0.458	0.11	0	0
19	S100A1	1.26310774	0.571	0.014	0	0
19	PPP1R1B	1.227462479	0.567	0.018	0	0
19	KRT15	1.202912986	0.795	0.176	0	0
19	DBI	1.198878122	0.995	0.749	0	0
19	NDRG2	1.133997643	0.622	0.229	0	0
19	TPD52L1	0.885482715	0.474	0.101	0	0
19	ELF3	0.875220185	0.329	0.029	0	0
19	STAC2	0.792149817	0.332	0.013	0	0
19	DNER	0.78810041	0.29	0.008	0	0
19	TESC	0.750827649	0.356	0.038	0	0
19	NCALD	0.740395909	0.367	0.037	0	0
19	ROPN1B	0.738272906	0.375	0.007	0	0
19	EPCAM	0.703031379	0.326	0.039	0	0
19	COX7C	1.003199961	0.998	0.951	1.01E-297	2.39E-293
19	AKR1C1	0.927242295	0.417	0.106	4.47E-282	1.07E-277
19	CALM2	0.823880026	1	0.957	1.40E-278	3.34E-274
19	CD24	0.924712012	0.38	0.086	7.27E-278	1.73E-273
19	SLC12A2	1.549025428	0.358	0.081	5.68E-274	1.35E-269
19	FXYD3	0.840519618	0.983	0.481	8.59E-273	2.05E-268
19	CHCHD10	1.119389288	0.668	0.33	3.36E-271	8.00E-267
19	COX5B	0.871898273	0.997	0.857	1.15E-265	2.74E-261
19	LDHA	1.067273007	0.992	0.936	2.58E-261	6.14E-257
19	PDCD4	1.189736444	0.595	0.271	4.09E-250	9.72E-246
19	ATP5MC3	0.905575404	0.977	0.702	1.06E-242	2.51E-238
19	ATP1B1	1.203222727	0.44	0.137	1.22E-231	2.90E-227
19	HINT1	0.728985162	0.998	0.903	7.40E-224	1.76E-219
19	PPDPF	0.752157528	0.995	0.874	1.04E-222	2.47E-218
19	COX7A2	0.718326076	0.991	0.862	1.06E-177	2.53E-173
19	NDUFA1	0.692200238	0.959	0.68	5.10E-174	1.21E-169
19	CD59	0.880332696	0.971	0.61	6.09E-173	1.45E-168
19	PEBP1	0.747165269	0.99	0.82	2.14E-170	5.08E-166
19	ENO1	0.828531887	0.977	0.823	1.99E-165	4.73E-161
19	UQCRB	0.70273757	0.979	0.86	7.20E-165	1.71E-160
19	ATP1A1	0.867128143	0.976	0.627	6.39E-157	1.52E-152
19	SOD2	0.693690863	0.9	0.496	8.22E-143	1.96E-138
19	ATP5F1B	0.716558004	0.98	0.814	4.97E-135	1.18E-130
19	CLDN4	0.808252803	0.362	0.205	1.86E-53	4.42E-49
19	SDC4	1.035481084	0.336	0.218	2.67E-40	6.35E-36
19	MT-CO1	0.789542364	0.999	0.995	6.30E-11	1.50E-06
20	KRT15	3.078848369	1	0.172	0	0
20	KRT14	1.535970999	0.998	0.669	0	0
20	DST	1.441361864	0.943	0.324	0	0
20	KRT5	1.4090983	1	0.488	0	0
20	S100A2	1.316276552	0.966	0.378	0	0
20	COL17A1	1.238602458	0.909	0.141	0	0
20	POSTN	0.822755389	0.844	0.199	0	0
20	SOX15	0.768468408	0.784	0.269	0	0
20	HOPX	0.735092205	0.863	0.383	0	0
20	ARL4A	0.730829614	0.769	0.288	0	0
20	FBXW7	0.721378673	0.75	0.241	0	0
20	ALDH3A1	0.706603252	0.636	0.117	0	0
20	TGFBI	0.706174594	0.796	0.275	0	0
20	CXADR	0.674144147	0.805	0.242	0	0
20	SYT8	0.657763798	0.481	0.091	0	0

20	NDFIP2	0.534942724	0.724	0.246	0	0
20	LAMB3	0.532159416	0.581	0.087	0	0
20	FGFR3	0.520288479	0.603	0.165	0	0
20	CXCL14	0.759409926	0.993	0.76	1.62E-300	3.86E-296
20	ATP1B3	0.723920032	0.94	0.64	7.21E-297	1.72E-292
20	ALDH3A2	0.542940747	0.699	0.249	3.38E-281	8.05E-277
20	HSPA2	0.723066681	0.804	0.366	2.01E-279	4.79E-275
20	SPINT2	0.569331987	0.88	0.389	4.08E-271	9.72E-267
20	IMPA2	0.53021361	0.7	0.246	2.01E-269	4.78E-265
20	CBR1	0.592748579	0.804	0.356	2.04E-269	4.87E-265
20	AQP3	0.718111524	0.952	0.54	6.09E-262	1.45E-257
20	C19orf33	0.523766984	0.834	0.34	2.41E-253	5.73E-249
20	ERRFI1	0.831815527	0.692	0.279	3.06E-249	7.29E-245
20	AREG	1.247852152	0.595	0.209	9.20E-244	2.19E-239
20	ADRB2	0.712053675	0.656	0.242	2.14E-242	5.10E-238
20	TOB1	0.757491937	0.806	0.437	4.71E-241	1.12E-236
20	FAM213A	0.56533439	0.706	0.276	6.69E-240	1.59E-235
20	CCL27	0.7687491	0.633	0.229	4.03E-225	9.59E-221
20	KLF5	0.708764775	0.85	0.479	1.15E-219	2.74E-215
20	PKM	0.546826031	0.959	0.818	1.40E-209	3.32E-205
20	PERP	0.56748657	1	0.708	3.06E-206	7.29E-202
20	TGIF1	0.606318947	0.745	0.374	9.09E-201	2.16E-196
20	SGK1	0.637820513	0.743	0.354	3.62E-197	8.62E-193
20	MT1X	0.699415369	0.962	0.748	2.38E-195	5.67E-191
20	PMAIP1	0.5523102	0.669	0.287	1.78E-183	4.23E-179
20	ANKRD37	0.53028169	0.481	0.17	5.01E-173	1.19E-168
20	GPNMB	0.579739105	0.849	0.556	2.76E-168	6.56E-164
20	AMD1	0.637172327	0.792	0.571	4.90E-142	1.17E-137
20	DNAJA1	0.673584605	0.919	0.829	7.87E-141	1.87E-136
20	SLC38A2	0.532221747	0.878	0.686	6.32E-139	1.50E-134
20	ZC3H12A	0.529262599	0.725	0.443	1.47E-128	3.49E-124
20	MYC	0.566767423	0.863	0.702	3.38E-98	8.04E-94
20	CKS2	0.56867293	0.679	0.461	2.90E-91	6.90E-87
20	DDX5	0.538389084	0.956	0.935	6.64E-91	1.58E-86
20	ATF3	0.543699269	0.767	0.556	7.47E-86	1.78E-81
21	TPSB2	3.863621758	0.96	0.007	0	0
21	TPSAB1	3.520733161	0.978	0.005	0	0
21	CTSG	2.016982158	0.719	0.003	0	0
21	HPGD	1.934101421	0.738	0.076	0	0
21	FTH1	1.807330596	1	0.951	0	0
21	HPGDS	1.725033914	0.674	0.009	0	0
21	SELENOK	1.610485838	0.996	0.687	0	0
21	ANXA1	1.602556542	1	0.866	0	0
21	CD69	1.291495339	0.327	0.041	0	0
21	RGS13	1.228706504	0.528	0.002	0	0
21	GATA2	1.088911757	0.437	0.051	0	0
21	H3F3B	0.890378502	1	0.997	0	0
21	CPA3	0.82497721	0.343	0.001	0	0
21	MS4A2	0.809021363	0.354	0	0	0
21	FTL	0.736062902	1	0.97	0	0
21	FCER1G	0.687062937	0.413	0.064	0	0
21	IL1RL1	0.608024261	0.253	0.007	0	0
21	PTMA	0.705645189	1	0.997	5.05E-292	1.20E-287
21	GLUL	1.146304936	0.963	0.504	1.02E-280	2.42E-276
21	VWA5A	0.808598764	0.363	0.083	9.30E-272	2.21E-267
21	UBB	0.947967392	1	0.969	1.94E-251	4.62E-247
21	SRGN	0.544329795	0.602	0.188	6.88E-246	1.64E-241
21	EMP3	0.752730094	0.809	0.408	1.65E-206	3.92E-202
21	SDCBP	0.712612347	0.975	0.542	2.88E-202	6.85E-198
21	SGK1	0.786612393	0.736	0.354	5.22E-197	1.24E-192
21	RPL34	0.524524633	1	1	1.42E-186	3.38E-182
21	EIF1	0.501735043	1	0.999	7.96E-175	1.90E-170
21	SAT1	0.612517742	0.998	0.789	3.56E-173	8.48E-169
21	MT-CO2	0.464765839	1	0.995	2.04E-150	4.85E-146

21	CLIC1	0.637240924	1	0.88	7.23E-147	1.72E-142
21	RPL36AL	0.625871636	0.999	0.944	3.31E-133	7.87E-129
21	BIRC3	0.96165045	0.413	0.169	4.25E-131	1.01E-126
21	HSPH1	0.659758442	0.965	0.534	2.24E-129	5.34E-125
21	PRNP	0.610687825	0.926	0.544	1.58E-125	3.76E-121
21	LAPTM5	0.495321473	0.323	0.105	9.93E-121	2.36E-116
21	MALAT1	0.495446253	1	0.997	1.87E-119	4.45E-115
21	DNAJA1	0.625359017	0.999	0.827	9.22E-115	2.19E-110
21	HSPA8	0.639497826	1	0.931	4.99E-104	1.19E-99
21	SEC62	0.473449992	0.982	0.654	4.33E-99	1.03E-94
21	PRDX1	0.567741619	1	0.901	8.99E-98	2.14E-93
21	JUND	0.551298077	0.663	0.428	3.09E-83	7.35E-79
21	ELF1	0.789772176	0.415	0.26	1.06E-74	2.51E-70
21	SQSTM1	0.470334478	0.99	0.708	2.38E-69	5.67E-65
21	HSPE1	0.664740601	0.994	0.789	6.58E-60	1.57E-55
21	DNAJB1	0.669507748	0.998	0.843	2.98E-59	7.10E-55
21	SH3BGRL3	0.473283441	0.998	0.786	1.02E-56	2.43E-52
21	LMNA	0.439330653	1	0.96	4.90E-47	1.17E-42
21	PLIN2	0.668345314	0.383	0.304	2.65E-30	6.32E-26
21	RGS2	0.470035563	0.296	0.196	5.08E-29	1.21E-24
21	DNAJB9	0.540148631	0.342	0.273	7.83E-26	1.86E-21
22	GJB6	0.663511109	0.332	0.034	0	0
22	MT-CO3	1.067059106	1	0.995	2.26E-254	5.38E-250
22	MT-CO2	0.944874903	0.999	0.995	1.14E-237	2.72E-233
22	GJB2	0.614097012	0.33	0.066	5.99E-228	1.43E-223
22	MT-ND5	0.788267543	0.99	0.949	5.99E-204	1.42E-199
22	MT-ND1	0.754915478	0.999	0.994	1.37E-200	3.25E-196
22	MT-CYB	0.787000795	0.999	0.995	1.68E-200	4.01E-196
22	MT-ATP6	0.787853481	0.998	0.993	1.14E-191	2.72E-187
22	MT-ND2	0.749278758	0.999	0.995	4.89E-184	1.16E-179
22	MT-CO1	0.893297678	1	0.995	7.54E-177	1.79E-172
22	MT-ND4	0.80319778	0.999	0.995	1.14E-170	2.72E-166
22	RPS6	0.459855685	1	1	9.92E-168	2.36E-163
22	RPL10A	0.453883199	1	0.999	8.53E-151	2.03E-146
22	RPS18	0.480570776	1	1	4.90E-140	1.17E-135
22	RPL13A	0.401408883	1	1	4.33E-131	1.03E-126
22	RPL7	0.394308419	1	1	5.12E-130	1.22E-125
22	RPL12	0.466070093	1	0.999	3.24E-129	7.72E-125
22	RPS5	0.422524126	1	0.999	2.46E-128	5.86E-124
22	MGST1	0.688066774	0.389	0.131	1.56E-127	3.72E-123
22	MT-ND3	0.7970054	0.997	0.992	8.11E-127	1.93E-122
22	RPL3	0.422808307	1	1	3.65E-126	8.69E-122
22	RPS19	0.421667452	1	1	6.22E-119	1.48E-114
22	RPL37A	0.36014027	1	1	3.08E-118	7.33E-114
22	RPL8	0.355109183	1	1	7.77E-116	1.85E-111
22	RPS24	0.366899767	1	0.998	6.05E-112	1.44E-107
22	RPL36	0.416107292	1	0.999	2.09E-111	4.97E-107
22	RPS3	0.402665677	1	0.999	2.17E-111	5.16E-107
22	FAM84A	0.360694766	0.323	0.108	9.71E-104	2.31E-99
22	RPLP1	0.407055644	1	1	2.00E-102	4.76E-98
22	FXVD3	0.490649336	0.835	0.485	2.03E-101	4.84E-97
22	RPL31	0.377140082	1	0.999	1.40E-100	3.34E-96
22	KRT15	0.511709038	0.455	0.184	1.41E-99	3.36E-95
22	COX4I1	0.410402129	0.998	0.967	5.70E-98	1.36E-93
22	RPS21	0.424969705	0.999	0.994	3.76E-97	8.96E-93
22	MT1X	0.380850454	0.954	0.749	3.89E-89	9.25E-85
22	RPLP0	0.36116346	1	0.999	2.17E-88	5.18E-84
22	RPL36A	0.408953839	1	0.988	6.20E-86	1.48E-81
22	UQCRH	0.39024379	0.947	0.819	1.98E-85	4.72E-81
22	SFRP1	0.387111114	0.311	0.114	1.51E-83	3.58E-79
22	ATP1B1	0.491315189	0.343	0.139	1.49E-79	3.56E-75
22	RPS2	0.435738692	1	1	2.85E-78	6.77E-74
22	RPS17	0.374225531	1	0.996	2.66E-76	6.34E-72
22	RPL28	0.401769086	1	0.999	4.56E-76	1.09E-71

22	SNHG8	0.401805634	0.891	0.705	1.02E-68	2.44E-64
22	DAPL1	0.512289852	0.505	0.271	1.30E-63	3.09E-59
22	CHCHD10	0.467396079	0.526	0.333	2.77E-59	6.59E-55
22	C19orf33	0.436281031	0.568	0.346	1.95E-56	4.65E-52
22	DEFB1	0.769882569	0.357	0.199	1.75E-46	4.16E-42
22	ATP1A1	0.592177333	0.748	0.632	3.81E-42	9.08E-38
22	ATP1B3	0.63007137	0.761	0.644	5.94E-36	1.41E-31
23	RGS5	2.234573773	0.866	0.081	0	0
23	NDUFA4L2	1.7223768	0.847	0.233	0	0
23	IGFBP7	1.352209397	1	0.644	0	0
23	CALD1	1.244220003	0.986	0.576	0	0
23	CPE	1.139131088	0.858	0.249	0	0
23	TINAGL1	1.087001896	0.788	0.149	0	0
23	ADIRF	1.086848901	0.999	0.629	0	0
23	CD36	1.063997354	0.493	0.079	0	0
23	LHFPL6	1.052802431	0.818	0.259	0	0
23	STEAP4	1.034262831	0.631	0.08	0	0
23	COX4I2	1.015031127	0.626	0.057	0	0
23	IFITM3	1.009670387	0.998	0.759	0	0
23	TAGLN	0.959046971	0.918	0.29	0	0
23	7-Sep	0.934695419	0.938	0.626	0	0
23	MYL9	0.918342919	0.971	0.454	0	0
23	NR2F2	0.903441951	0.714	0.154	0	0
23	ACTA2	0.900942287	0.787	0.18	0	0
23	LGI4	0.780829398	0.569	0.064	0	0
23	EPS8	0.755322341	0.643	0.159	0	0
23	FAM162B	0.748659163	0.509	0.039	0	0
23	4-Sep	0.729162831	0.517	0.075	0	0
23	SYNPO2	0.66362574	0.52	0.115	0	0
23	HIGD1B	0.646053857	0.376	0.022	0	0
23	GPM6B	0.629921439	0.502	0.097	0	0
23	RERG	0.609550047	0.512	0.08	0	0
23	MYO1B	0.608946118	0.503	0.108	0	0
23	NOTCH3	0.742550744	0.613	0.175	2.44E-302	5.80E-298
23	FABP4	0.972688034	0.553	0.134	2.11E-301	5.02E-297
23	ARHGDI1	0.953630586	0.723	0.264	6.68E-298	1.59E-293
23	PRRX1	0.745186166	0.692	0.216	2.53E-296	6.02E-292
23	A2M	0.661374941	0.686	0.191	5.02E-294	1.19E-289
23	PDGFRB	0.759391029	0.647	0.194	5.93E-288	1.41E-283
23	TFPI	0.714012502	0.595	0.167	4.14E-287	9.86E-283
23	COL18A1	0.890498252	0.754	0.284	7.50E-287	1.79E-282
23	CYGB	0.766911461	0.534	0.139	1.24E-269	2.95E-265
23	SPARCL1	0.772891772	0.867	0.344	4.60E-268	1.10E-263
23	C20orf27	0.697070549	0.552	0.167	4.92E-261	1.17E-256
23	SPARC	0.731461326	0.987	0.594	7.16E-261	1.70E-256
23	TIMP3	0.90140937	0.828	0.392	1.20E-257	2.85E-253
23	MFGE8	0.847410885	0.797	0.362	3.98E-257	9.48E-253
23	GPX3	0.716313942	0.6	0.184	6.80E-241	1.62E-236
23	IFITM1	0.745557533	0.707	0.268	1.13E-239	2.69E-235
23	COL4A2	0.635439402	0.525	0.164	8.20E-204	1.95E-199
23	IFITM2	0.709691219	0.902	0.557	3.93E-199	9.36E-195
23	COL4A1	0.609989856	0.48	0.146	1.51E-186	3.59E-182
23	LAPTM4A	0.605517131	0.992	0.899	1.18E-185	2.81E-181
23	LGALS1	0.625396867	0.997	0.669	6.70E-165	1.59E-160
23	MT2A	0.712066707	0.981	0.801	6.72E-165	1.60E-160
23	THY1	0.646741873	0.576	0.213	3.02E-150	7.18E-146
23	S100A4	0.622817936	0.96	0.673	2.10E-138	4.99E-134
24	KRT6A	3.155013462	0.981	0.112	0	0
24	KRT16	2.672338562	0.916	0.143	0	0
24	KRT6B	2.467449613	0.771	0.046	0	0
24	KRT5	2.235254077	0.977	0.491	0	0
24	KRT14	2.111785623	0.987	0.671	0	0
24	KRT6C	1.819756632	0.646	0.017	0	0
24	KRT17	1.761204791	0.75	0.196	0	0

24	S100A2	1.744485798	0.931	0.381	0	0
24	LY6D	1.455725843	0.975	0.494	0	0
24	MT1X	1.405557661	0.986	0.749	0	0
24	LGALS7	1.327436062	0.916	0.257	0	0
24	S100A14	1.313944636	0.993	0.534	0	0
24	CALML3	1.196888747	0.824	0.175	0	0
24	TPPP3	1.093434507	0.838	0.326	0	0
24	DSP	1.058636786	0.964	0.485	0	0
24	C19orf33	1.053232713	0.908	0.341	0	0
24	S100A16	0.972516975	0.976	0.596	0	0
24	JUP	0.893869016	0.924	0.331	0	0
24	PKP1	0.885974326	0.848	0.237	0	0
24	TRIM29	0.884282382	0.916	0.273	0	0
24	IGFL1	0.821691045	0.346	0.006	0	0
24	PKP3	0.765034899	0.843	0.228	0	0
24	IMPA2	0.754584634	0.842	0.246	0	0
24	LAD1	0.743327367	0.744	0.164	0	0
24	DSC3	0.82617956	0.906	0.354	4.60E-304	1.10E-299
24	SPINT2	0.755262709	0.918	0.391	2.29E-302	5.45E-298
24	RHOV	0.663377417	0.686	0.189	2.09E-300	4.97E-296
24	PERP	1.043198421	1	0.709	1.15E-294	2.74E-290
24	FXYD3	0.766736818	0.976	0.483	1.32E-277	3.14E-273
24	DAPL1	0.6184722	0.812	0.267	3.60E-272	8.57E-268
24	FGFBP1	0.649773886	0.667	0.183	1.43E-268	3.40E-264
24	MT1G	0.650644012	0.458	0.098	7.22E-267	1.72E-262
24	HOPX	0.717315419	0.886	0.385	2.90E-265	6.90E-261
24	AQP3	0.849036241	0.984	0.541	1.44E-263	3.44E-259
24	LGALS7B	0.855846481	0.978	0.528	1.78E-258	4.24E-254
24	CLTB	0.676216805	0.955	0.661	3.48E-256	8.29E-252
24	SERPINB5	0.671344133	0.912	0.379	3.48E-253	8.28E-249
24	GSTP1	0.666578845	0.992	0.926	4.31E-245	1.02E-240
24	CA2	0.624911536	0.643	0.193	2.97E-242	7.06E-238
24	FAM213A	0.604647101	0.755	0.277	5.69E-226	1.35E-221
24	SFN	0.786917028	1	0.684	1.21E-220	2.89E-216
24	S100A8	0.60005979	0.363	0.072	2.55E-220	6.06E-216
24	IFI27	0.894844993	0.861	0.472	9.46E-200	2.25E-195
24	DMKN	1.011969334	0.919	0.609	2.31E-197	5.49E-193
24	FABP5	1.097396845	0.845	0.533	7.67E-190	1.82E-185
24	PDLIM1	0.618252249	0.842	0.47	3.00E-179	7.13E-175
24	COL17A1	0.600023121	0.497	0.15	1.58E-161	3.76E-157
24	MT1E	0.80440509	0.773	0.465	2.75E-144	6.54E-140
24	KRT1	0.904407703	0.849	0.581	3.91E-134	9.31E-130
24	KRT10	0.973373111	0.928	0.854	2.50E-63	5.95E-59
25	S100A8	3.463071706	0.989	0.063	0	0
25	S100A9	3.012122806	0.928	0.064	0	0
25	S100A7	2.83996266	0.841	0.028	0	0
25	SPRR1B	1.792988834	0.442	0.068	0	0
25	LGALS7B	1.51827461	0.994	0.528	0	0
25	KRT6A	1.382413705	0.601	0.118	0	0
25	LY6D	1.37657574	0.95	0.495	0	0
25	S100A14	1.153560105	0.978	0.534	0	0
25	CSTA	1.117506296	0.783	0.258	0	0
25	CCL27	1.102086192	0.802	0.228	0	0
25	TMEM45A	1.044506578	0.818	0.292	0	0
25	IMPA2	0.774810404	0.792	0.247	0	0
25	CALML3	1.060724357	0.659	0.177	4.54E-306	1.08E-301
25	TRIM29	0.694036841	0.83	0.275	4.27E-296	1.02E-291
25	KRT16	1.598858438	0.588	0.148	3.05E-290	7.27E-286
25	SFN	1.138595293	1	0.684	7.75E-289	1.84E-284
25	DAPL1	0.726767188	0.789	0.267	4.58E-276	1.09E-271
25	LYPD3	1.185238072	0.91	0.453	9.53E-276	2.27E-271
25	SPINK5	0.777542322	0.566	0.145	7.93E-266	1.89E-261
25	CRABP2	0.920940023	0.753	0.273	1.39E-261	3.30E-257
25	PERP	0.996084397	0.999	0.709	1.15E-258	2.73E-254

25	HMGA1	0.663904999	0.798	0.299	2.69E-256	6.41E-252
25	DEFB1	0.714384943	0.659	0.195	3.87E-255	9.20E-251
25	HBEGF	0.870414984	0.696	0.24	3.21E-251	7.64E-247
25	TACSTD2	0.981606432	0.954	0.537	7.98E-250	1.90E-245
25	PMAIP1	0.729663559	0.769	0.288	5.65E-246	1.35E-241
25	SBSN	1.380915236	0.737	0.289	1.40E-244	3.32E-240
25	AQP3	0.931457784	0.958	0.542	8.78E-239	2.09E-234
25	CA2	0.890031845	0.616	0.193	1.68E-237	4.01E-233
25	LGALS7	1.093501301	0.687	0.261	6.75E-229	1.61E-224
25	GLTP	0.752042777	0.69	0.254	1.65E-222	3.94E-218
25	SERPINB5	0.662496944	0.875	0.379	2.09E-222	4.96E-218
25	JUP	0.691553786	0.804	0.333	7.76E-219	1.85E-214
25	FGFBP1	0.871938521	0.605	0.184	4.25E-218	1.01E-213
25	KRTDAP	1.585126172	0.819	0.44	3.48E-216	8.29E-212
25	S100A11	0.657147199	0.999	0.951	8.93E-216	2.12E-211
25	S100A16	0.680761864	0.934	0.597	3.31E-207	7.87E-203
25	DMKN	1.154694203	0.897	0.609	7.25E-200	1.72E-195
25	RPS4Y1	0.718740211	0.654	0.24	4.14E-191	9.85E-187
25	CSTB	0.794175188	0.938	0.713	7.68E-190	1.83E-185
25	TUBA1C	0.675814839	0.914	0.58	1.98E-188	4.71E-184
25	KRT1	1.289301809	0.857	0.581	3.90E-183	9.28E-179
25	CALML5	0.930011797	0.54	0.173	7.80E-175	1.86E-170
25	KRT10	1.226938119	0.956	0.854	1.36E-173	3.24E-169
25	KRT17	0.806892554	0.578	0.199	3.22E-170	7.67E-166
25	PHLDA2	1.043402193	0.82	0.509	2.85E-166	6.79E-162
25	FABP5	1.19100155	0.817	0.534	2.47E-149	5.89E-145
25	AREG	0.786027179	0.539	0.211	4.57E-125	1.09E-120
25	S100A2	1.142229482	0.607	0.386	2.13E-71	5.07E-67
25	KRT2	0.926359455	0.398	0.33	1.30E-12	3.09E-08
26	DCD	6.248746204	0.91	0.154	0	0
26	MUCL1	5.384126253	0.92	0.074	0	0
26	SCGB2A2	5.259035733	0.972	0.058	0	0
26	SCGB1B2P	4.055237009	0.932	0.022	0	0
26	SCGB1D2	3.896271685	0.853	0.025	0	0
26	PIP	3.648296276	0.707	0.013	0	0
26	AZGP1	2.376579253	0.795	0.019	0	0
26	KRT19	2.177905186	0.762	0.034	0	0
26	KRT7	1.946993173	0.742	0.037	0	0
26	AQP5	1.799972522	0.692	0.025	0	0
26	SLC12A2	1.619066375	0.623	0.078	0	0
26	KRT18	1.575799633	0.703	0.076	0	0
26	SNORC	1.405049849	0.333	0.025	0	0
26	PRR4	1.272462426	0.269	0.003	0	0
26	KRT8	1.270370483	0.619	0.061	0	0
26	TSPAN8	1.113067719	0.599	0.066	0	0
26	ATP1B1	1.104702505	0.576	0.136	0	0
26	ZG16B	1.097302565	0.438	0.059	0	0
26	PPP1R1B	1.032536438	0.559	0.021	0	0
26	ELF3	0.987478284	0.469	0.029	0	0
26	C5orf46	0.966595749	0.527	0.022	0	0
26	SERHL2	0.953228367	0.424	0.013	0	0
26	LRRC26	0.93564336	0.533	0.01	0	0
26	CD24	0.908768785	0.498	0.085	0	0
26	CLDN10	0.905345454	0.282	0.015	0	0
26	CALML5	0.867491008	0.698	0.171	0	0
26	SCGB2A1	0.768350638	0.308	0.004	0	0
26	CRACR2B	0.74042383	0.525	0.048	0	0
26	CLDN3	0.731513292	0.459	0.01	0	0
26	SOX9	0.728564374	0.445	0.064	0	0
26	SMIM22	0.727708738	0.481	0.01	0	0
26	CITED4	0.714772879	0.479	0.093	0	0
26	CLDN7	0.666057091	0.478	0.033	0	0
26	CXCL1	1.319461108	0.341	0.07	2.65E-207	6.30E-203
26	XBP1	0.847213379	0.89	0.5	1.47E-203	3.49E-199

26	FXD3	0.669088323	0.964	0.484	6.08E-185	1.45E-180
26	SDC4	1.215091774	0.545	0.216	1.29E-170	3.06E-166
26	MT-CO3	0.939108735	1	0.995	1.13E-167	2.69E-163
26	CLDN4	0.838741484	0.565	0.202	2.64E-166	6.29E-162
26	SFRP1	1.195073019	0.394	0.113	1.55E-163	3.70E-159
26	MT-ND4	0.936921433	1	0.995	2.64E-163	6.27E-159
26	ATP1A1	0.73295271	0.952	0.629	4.35E-163	1.03E-158
26	MT-CO2	1.004824772	1	0.995	1.64E-154	3.91E-150
26	MT-CO1	0.973621054	1	0.995	5.17E-152	1.23E-147
26	DBI	0.710095936	0.976	0.75	3.43E-141	8.16E-137
26	MT-ND1	0.812724712	1	0.994	2.34E-137	5.57E-133
26	MT-CYB	0.720388639	1	0.995	2.08E-112	4.94E-108
26	MT-ATP6	0.750102327	1	0.993	2.00E-111	4.77E-107
26	CXCL2	0.893015843	0.47	0.205	7.58E-93	1.80E-88
26	MT-ND3	0.714853947	1	0.992	2.86E-89	6.80E-85
27	HIST1H4C	2.230176724	0.844	0.25	0	0
27	KRT5	1.531155818	0.973	0.492	0	0
27	STMN1	1.513598936	0.96	0.299	0	0
27	HMGB2	1.462925057	0.979	0.452	0	0
27	PTTG1	1.447670869	0.949	0.206	0	0
27	UBE2C	1.30750392	0.854	0.018	0	0
27	TUBA1B	1.264063105	1	0.934	0	0
27	NUSAP1	1.181576873	0.906	0.076	0	0
27	PCLAF	1.121206108	0.729	0.03	0	0
27	TOP2A	1.116926749	0.771	0.016	0	0
27	TK1	1.07350078	0.71	0.026	0	0
27	HMGB1	1.045089822	1	0.948	0	0
27	CDK1	1.042551433	0.804	0.022	0	0
27	CENPF	1.018762748	0.716	0.018	0	0
27	CKS1B	1.016095596	0.919	0.265	0	0
27	CDC20	0.906613693	0.654	0.037	0	0
27	SMC4	0.885399698	0.81	0.146	0	0
27	BIRC5	0.875405094	0.73	0.017	0	0
27	CENPW	0.868285629	0.804	0.07	0	0
27	TYMS	0.820912008	0.65	0.037	0	0
27	MT1G	0.779203509	0.59	0.097	0	0
27	CDKN3	0.774368321	0.629	0.02	0	0
27	PHGDH	0.773799815	0.817	0.235	0	0
27	MKI67	0.767783404	0.651	0.01	0	0
27	PBK	0.759050303	0.666	0.007	0	0
27	RRM2	0.730691605	0.534	0.011	0	0
27	CCNB1	0.728155395	0.529	0.043	0	0
27	CCNB2	0.703880209	0.593	0.012	0	0
27	H2AFZ	0.914001291	1	0.827	6.31E-280	1.50E-275
27	HMG2	1.016198948	0.973	0.689	1.03E-277	2.44E-273
27	H2AFV	0.679235428	0.859	0.323	3.71E-277	8.83E-273
27	HINT1	0.759065825	0.997	0.904	1.09E-274	2.60E-270
27	TUBB	1.031432882	0.991	0.845	5.45E-258	1.30E-253
27	PTMA	0.725920847	1	0.997	8.90E-252	2.12E-247
27	S100A2	0.999615492	0.91	0.383	2.79E-244	6.64E-240
27	KRT14	1.310968394	0.966	0.672	1.05E-234	2.49E-230
27	UBE2S	0.7206341	0.779	0.282	2.03E-234	4.82E-230
27	PLP2	0.718800523	0.976	0.676	2.38E-233	5.66E-229
27	S100A14	0.951123539	0.964	0.535	1.10E-226	2.61E-222
27	DEK	0.716289879	0.897	0.488	5.54E-221	1.32E-216
27	PCNA	0.743863041	0.624	0.197	2.23E-213	5.31E-209
27	COL17A1	0.710410187	0.58	0.15	1.88E-205	4.47E-201
27	CKS2	0.753482285	0.914	0.46	2.44E-205	5.80E-201
27	MTIX	1.063613134	0.967	0.749	5.48E-200	1.30E-195
27	SLC25A5	0.719561077	0.979	0.803	9.77E-199	2.33E-194
27	TUBA1C	0.732386183	0.941	0.581	1.26E-192	3.00E-188
27	MT2A	0.869235235	0.991	0.802	1.88E-191	4.47E-187
27	TUBB4B	0.746895617	0.983	0.781	1.56E-174	3.71E-170
27	MT1E	0.903087599	0.826	0.466	9.58E-158	2.28E-153

27	KRT17	0.674349961	0.563	0.2	4.46E-126	1.06E-121
28	KRT17	3.711891716	0.997	0.195	0	0
28	S100A2	2.177100707	0.94	0.383	0	0
28	KRT6B	2.05260012	0.504	0.052	0	0
28	GJB6	1.194929792	0.527	0.033	0	0
28	GJB2	0.819943915	0.509	0.066	0	0
28	SOSTDC1	0.708111816	0.419	0.043	0	0
28	SOX9	0.702099298	0.518	0.064	0	0
28	RBP1	0.640828396	0.5	0.075	0	0
28	BARX2	0.597521725	0.494	0.06	0	0
28	C1QTNF12	0.56631685	0.34	0.021	0	0
28	VSNL1	0.414586676	0.398	0.055	0	0
28	KRT5	1.457517779	0.991	0.492	3.67E-305	8.74E-301
28	CALML3	1.506500959	0.669	0.179	3.39E-281	8.07E-277
28	KRT6A	1.465946467	0.534	0.12	1.48E-244	3.51E-240
28	S100A14	0.994686434	0.967	0.535	9.65E-221	2.30E-216
28	KRT14	0.877226147	0.964	0.672	7.03E-170	1.67E-165
28	ABRACL	0.552079498	0.57	0.184	4.39E-164	1.04E-159
28	EGR2	0.457148841	0.47	0.127	4.00E-159	9.53E-155
28	TRIM29	0.515722556	0.741	0.277	4.83E-154	1.15E-149
28	DSG3	0.414504846	0.482	0.135	1.99E-151	4.74E-147
28	PHGDH	0.603248237	0.627	0.238	1.15E-143	2.73E-139
28	EFNA3	0.411347481	0.549	0.181	3.66E-137	8.70E-133
28	CAPNS2	0.446636578	0.496	0.161	1.06E-129	2.52E-125
28	SDC1	0.738078767	0.593	0.231	1.73E-123	4.11E-119
28	HMGA1	0.518085841	0.696	0.302	2.70E-122	6.42E-118
28	PERP	0.579237116	0.999	0.71	1.78E-120	4.23E-116
28	LGALS7B	0.839394435	0.882	0.531	8.51E-119	2.03E-114
28	SPINT2	0.513950911	0.772	0.394	1.05E-109	2.51E-105
28	STMN1	0.584345223	0.66	0.303	4.37E-106	1.04E-101
28	KRT16	1.294968658	0.448	0.151	1.86E-104	4.44E-100
28	LAMB3	0.427527862	0.337	0.094	2.54E-104	6.04E-100
28	DSP	0.467751496	0.87	0.488	3.56E-102	8.48E-98
28	ACTN1	0.468227374	0.59	0.27	6.30E-87	1.50E-82
28	KRT15	0.86022152	0.481	0.185	7.12E-86	1.69E-81
28	DAPL1	0.474657163	0.602	0.271	7.37E-85	1.75E-80
28	APOE	0.58786475	0.882	0.661	2.78E-79	6.62E-75
28	SERPINB5	0.454900154	0.726	0.383	2.13E-78	5.06E-74
28	S100A16	0.564012531	0.819	0.599	1.36E-73	3.24E-69
28	TACSTD2	0.575294784	0.831	0.54	5.22E-72	1.24E-67
28	FST	0.602899469	0.292	0.096	3.05E-70	7.26E-66
28	LGALS7	0.669026109	0.561	0.264	1.35E-69	3.21E-65
28	BTG3	0.425568411	0.674	0.435	3.65E-61	8.69E-57
28	SFRP1	0.418710034	0.316	0.115	9.64E-59	2.29E-54
28	SOX4	0.47279428	0.576	0.404	7.73E-34	1.84E-29
28	TMEM45A	0.516976597	0.482	0.298	3.64E-33	8.66E-29
28	AREG	0.425813885	0.4	0.214	6.09E-30	1.45E-25
28	SPINK5	0.695659648	0.29	0.149	6.39E-28	1.52E-23
28	DST	0.471979003	0.49	0.334	3.78E-27	9.00E-23
28	GJA1	0.438194746	0.518	0.365	7.45E-24	1.77E-19
28	FABP5	0.879677361	0.638	0.537	2.23E-21	5.30E-17
29	DES	2.373840879	0.902	0.04	0	0
29	ACTG2	2.185801806	0.894	0.054	0	0
29	TPM2	2.054769126	0.964	0.224	0	0
29	ACTA2	1.946137513	0.953	0.182	0	0
29	MYLK	1.9404481	0.842	0.142	0	0
29	MYL9	1.836657882	1	0.457	0	0
29	TAGLN	1.823354762	0.995	0.292	0	0
29	MYH11	1.823284735	0.806	0.078	0	0
29	PCP4	1.789577052	0.722	0.017	0	0
29	CNN1	1.715094575	0.81	0.057	0	0
29	CSRP1	1.577761868	0.837	0.257	0	0
29	TPM1	1.455350652	0.912	0.352	0	0
29	ACTA1	1.36309124	0.492	0.012	0	0

29	PPP1R14A	1.294289395	0.698	0.107	0	0
29	ACTC1	0.845420041	0.273	0.013	0	0
29	ITGA8	0.773578967	0.382	0.032	0	0
29	SYNM	0.766807597	0.373	0.037	0	0
29	FLNC	0.741388648	0.304	0.026	0	0
29	P2RX1	0.702836397	0.299	0.012	0	0
29	SYNPO2	1.203298812	0.564	0.117	2.01E-298	4.77E-294
29	CARMN	0.84877877	0.355	0.046	1.49E-289	3.56E-285
29	PLN	0.706174657	0.413	0.059	3.07E-280	7.30E-276
29	FLNA	1.734881127	0.833	0.36	4.49E-270	1.07E-265
29	PDLIM7	1.012647416	0.572	0.152	4.95E-234	1.18E-229
29	ACTB	1.090047139	1	0.995	2.72E-231	6.49E-227
29	RAMP1	0.752685121	0.404	0.074	1.06E-223	2.53E-219
29	SMTN	1.139927393	0.619	0.21	2.00E-206	4.76E-202
29	PDLIM3	0.652228385	0.368	0.067	5.03E-200	1.20E-195
29	PPP1R12B	0.718392668	0.4	0.089	9.40E-178	2.24E-173
29	LMOD1	0.657987263	0.382	0.08	7.54E-176	1.79E-171
29	CALD1	0.996218864	0.993	0.578	3.98E-165	9.47E-161
29	DSTN	0.85166021	1	0.917	1.09E-151	2.58E-147
29	CKB	0.819938771	0.866	0.436	1.13E-151	2.70E-147
29	LPP	1.093323174	0.552	0.215	1.44E-144	3.42E-140
29	SLMAP	0.810123425	0.446	0.14	3.82E-138	9.09E-134
29	CD151	0.723822328	0.825	0.438	5.64E-118	1.34E-113
29	MT-ND4	0.992536663	0.995	0.995	1.86E-111	4.43E-107
29	MYL6	0.677844285	1	0.993	5.35E-111	1.27E-106
29	CFL2	0.632723537	0.353	0.103	6.19E-107	1.47E-102
29	FHL1	0.798358298	0.578	0.263	2.87E-106	6.83E-102
29	MT-ATP6	0.850009538	0.995	0.993	3.36E-103	7.99E-99
29	MT-ND2	0.961137468	0.997	0.995	1.10E-102	2.61E-98
29	ITGB1	0.693788044	0.925	0.549	9.44E-98	2.25E-93
29	MT-CYB	0.891134662	0.997	0.995	1.01E-95	2.40E-91
29	MT-ND3	1.016324688	0.995	0.993	3.16E-95	7.52E-91
29	MT-CO2	0.841886069	0.997	0.995	6.58E-82	1.57E-77
29	FN1	0.724229209	0.507	0.222	2.62E-81	6.23E-77
29	MT-CO3	0.840478305	0.997	0.995	6.48E-79	1.54E-74
29	NDUFA4	0.67441362	0.992	0.877	1.20E-74	2.85E-70
29	ACTN1	0.757931718	0.49	0.271	1.97E-66	4.70E-62
30	FABP4	2.447142919	1	0.132	0	0
30	RBP7	1.514226988	0.637	0.087	0	0
30	CD36	1.131317586	0.61	0.081	0	0
30	CLDN5	0.89669015	0.529	0.087	9.68E-298	2.30E-293
30	TMSB4X	0.971097908	1	0.994	8.77E-211	2.09E-206
30	IFI27	0.9794039	0.993	0.472	9.38E-210	2.23E-205
30	GNG11	1.0810824	0.689	0.264	5.21E-173	1.24E-168
30	TMSB10	0.8644489	1	0.973	4.11E-170	9.79E-166
30	SPARCL1	0.552812072	0.93	0.346	6.88E-162	1.64E-157
30	FABP5	0.701661073	0.988	0.533	6.31E-151	1.50E-146
30	EGFL7	0.685706678	0.409	0.101	2.50E-141	5.96E-137
30	RAMP2	0.724519939	0.478	0.141	2.12E-127	5.04E-123
30	BST2	0.774333366	0.546	0.209	8.59E-117	2.04E-112
30	CAV1	0.679021785	0.988	0.656	1.62E-102	3.86E-98
30	VWF	0.511729663	0.323	0.08	1.80E-99	4.29E-95
30	B2M	0.44654389	1	0.998	6.26E-96	1.49E-91
30	PLVAP	0.406955887	0.325	0.082	7.32E-92	1.74E-87
30	A2M	0.642510391	0.509	0.196	1.76E-91	4.18E-87
30	IGFBP7	0.390588281	1	0.646	7.44E-88	1.77E-83
30	IFITM3	0.568383434	1	0.76	1.29E-83	3.07E-79
30	PECAM1	0.471660611	0.34	0.097	1.69E-83	4.02E-79
30	MYL12A	0.573486616	1	0.837	5.73E-81	1.36E-76
30	ADGRL4	0.453086238	0.275	0.074	7.49E-76	1.78E-71
30	RAMP3	0.436727572	0.282	0.078	5.21E-74	1.24E-69
30	HLA-B	0.486367662	1	0.968	8.67E-74	2.06E-69
30	TXNIP	0.455632038	0.921	0.526	1.11E-70	2.64E-66
30	CRIP2	0.446039615	0.784	0.428	1.77E-69	4.21E-65

30	HLA-E	0.484793373	1	0.882	2.05E-65	4.88E-61
30	FKBP1A	0.528163448	0.985	0.687	2.67E-65	6.35E-61
30	ID1	0.54354017	0.751	0.404	5.18E-64	1.23E-59
30	CCDC85B	0.445079587	0.866	0.518	1.68E-63	4.00E-59
30	PCAT19	0.367916514	0.265	0.08	2.06E-58	4.90E-54
30	AQP1	0.453749817	0.455	0.2	1.04E-57	2.47E-53
30	RHOC	0.433845041	0.881	0.561	1.36E-52	3.24E-48
30	IFITM2	0.351225141	0.952	0.558	9.35E-52	2.23E-47
30	HLA-C	0.455429073	1	0.961	6.80E-51	1.62E-46
30	MYL6	0.377516507	1	0.993	1.67E-47	3.97E-43
30	CDC37	0.369024823	0.808	0.519	2.93E-43	6.98E-39
30	SLC9A3R2	0.531437482	0.347	0.168	2.73E-41	6.49E-37
30	COL4A1	0.479380431	0.323	0.149	8.58E-40	2.04E-35
30	ESAM	0.404061398	0.278	0.12	2.18E-36	5.19E-32
30	GMFG	0.37864396	0.285	0.133	4.71E-32	1.12E-27
30	FIS1	0.314689751	0.773	0.523	1.93E-30	4.59E-26
30	SELENOW	0.350973975	0.971	0.74	3.94E-28	9.37E-24
30	COL15A1	0.395464143	0.311	0.163	4.40E-27	1.05E-22
30	VAMP5	0.465524391	0.405	0.28	1.33E-24	3.17E-20
30	ENG	0.339509672	0.282	0.155	1.81E-21	4.32E-17
30	COL4A2	0.403388226	0.294	0.168	1.83E-21	4.37E-17
30	RGCC	0.345080218	0.373	0.238	2.41E-20	5.75E-16
30	MGLL	0.372390125	0.297	0.208	3.52E-13	8.38E-09
31	DCT	3.543720778	0.955	0.008	0	0
31	TYRP1	3.295146161	0.88	0.009	0	0
31	PMEL	2.957021293	0.869	0.015	0	0
31	MLANA	2.659096923	0.82	0.008	0	0
31	QPCT	1.499653078	0.614	0.114	0	0
31	MITF	1.471598202	0.551	0.072	0	0
31	CYB561A3	1.278551803	0.598	0.122	0	0
31	GPM6B	1.199047798	0.625	0.099	0	0
31	MFSD12	1.157183784	0.544	0.052	0	0
31	TRPM1	1.13594972	0.535	0.001	0	0
31	PCSK2	1.068397165	0.478	0.007	0	0
31	BCAN	1.047705878	0.542	0.002	0	0
31	PLP1	0.998006921	0.519	0.058	0	0
31	TYR	0.997369257	0.504	0.001	0	0
31	TUBB2B	0.862300394	0.377	0.043	0	0
31	GMPR	0.770958908	0.442	0.033	0	0
31	SNCA	0.759719612	0.469	0.062	0	0
31	GPR143	0.745809027	0.422	0.002	0	0
31	MCOLN3	0.73578809	0.364	0.018	0	0
31	KIT	0.721311451	0.409	0.013	0	0
31	GPR155	0.772542582	0.425	0.058	1.35E-306	3.21E-302
31	EDNRB	0.674292675	0.408	0.072	5.00E-212	1.19E-207
31	C4orf48	0.746585472	0.449	0.094	8.74E-196	2.08E-191
31	CDC42EP3	0.943950045	0.522	0.132	6.61E-186	1.57E-181
31	PHACTR1	0.717738163	0.345	0.063	4.45E-165	1.06E-160
31	OSTM1	0.629765514	0.402	0.091	3.18E-159	7.57E-155
31	GPNMB	1.013872254	0.961	0.557	3.35E-157	7.98E-153
31	SAT1	0.866191185	0.993	0.791	1.12E-144	2.67E-140
31	CHCHD6	0.659326355	0.348	0.08	1.49E-133	3.56E-129
31	CD59	0.928701363	0.977	0.614	6.15E-132	1.46E-127
31	NSG1	0.80057126	0.553	0.205	4.18E-125	9.96E-121
31	MT-CO3	0.929320386	0.998	0.995	4.62E-123	1.10E-118
31	MT-CYB	0.858148299	1	0.995	1.91E-122	4.54E-118
31	APOE	0.78846368	0.982	0.661	4.71E-118	1.12E-113
31	HMG20B	0.854602781	0.575	0.256	1.84E-115	4.39E-111
31	MT-ND4	0.756030321	1	0.995	6.03E-104	1.43E-99
31	RAB32	0.619997711	0.388	0.118	1.23E-101	2.94E-97
31	SDCBP	0.684592382	0.93	0.546	3.09E-101	7.35E-97
31	FRZB	0.700571798	0.366	0.103	1.38E-98	3.28E-94
31	GSTP1	0.948141195	0.993	0.926	1.89E-94	4.50E-90
31	TFAP2A	0.65723883	0.472	0.185	7.49E-92	1.78E-87

31	MT-ATP6	0.736159467	0.998	0.993	7.98E-92	1.90E-87
31	EMP3	0.697872952	0.777	0.412	5.34E-90	1.27E-85
31	MT-CO1	0.684340416	1	0.995	2.10E-85	4.99E-81
31	MT-ND1	0.658381343	0.998	0.994	1.07E-80	2.55E-76
31	MT-ND3	0.825430119	1	0.992	8.62E-75	2.05E-70
31	MT-CO2	0.636160001	1	0.995	5.67E-70	1.35E-65
31	MT-ND2	0.623181105	1	0.995	3.95E-68	9.40E-64
31	ASAH1	0.63699143	0.51	0.291	3.95E-57	9.41E-53
31	TTC3	0.646248074	0.451	0.27	6.53E-40	1.56E-35
32	GNLY	2.78164674	0.725	0.004	0	0
32	NKG7	2.667884612	0.867	0.012	0	0
32	XCL1	2.278054512	0.459	0.003	0	0
32	XCL2	2.206819527	0.57	0.003	0	0
32	CCL5	2.129120846	0.751	0.025	0	0
32	GZMB	1.925691361	0.679	0.004	0	0
32	CCL4	1.836714415	0.6	0.038	0	0
32	SRGN	1.770504441	0.956	0.188	0	0
32	KLRB1	1.717719398	0.744	0.016	0	0
32	CTSW	1.616881109	0.803	0.014	0	0
32	CST7	1.509020107	0.751	0.031	0	0
32	CD69	1.351234611	0.613	0.041	0	0
32	GZMA	1.306376764	0.585	0.01	0	0
32	KLRD1	1.288281262	0.699	0.003	0	0
32	CD7	1.264113971	0.662	0.025	0	0
32	HCST	1.229832996	0.762	0.079	0	0
32	PRF1	1.217326806	0.57	0.003	0	0
32	CORO1A	1.20733283	0.681	0.066	0	0
32	CXCR4	1.180529478	0.598	0.097	0	0
32	CD52	0.988827164	0.487	0.069	0	0
32	TYROBP	0.954884495	0.661	0.072	0	0
32	FGFBP2	0.938816322	0.393	0.024	0	0
32	ITGB2	0.919209266	0.552	0.052	0	0
32	DOK2	0.912049021	0.544	0.05	0	0
32	KLRC1	0.87439748	0.371	0.001	0	0
32	GZMH	0.860527006	0.428	0.003	0	0
32	IFNG	0.835273759	0.271	0.007	0	0
32	RUNX3	0.83250099	0.518	0.049	0	0
32	RAC2	0.80453102	0.544	0.038	0	0
32	GPR65	0.79070998	0.482	0.034	0	0
32	PTPRC	0.78979645	0.53	0.057	0	0
32	FCGR3A	0.788168337	0.328	0.006	0	0
32	DUSP2	1.355866927	0.732	0.188	1.56E-284	3.71E-280
32	CREM	1.343080336	0.745	0.211	1.54E-260	3.66E-256
32	B2M	0.971909131	1	0.998	6.47E-234	1.54E-229
32	ISG20	0.788385675	0.485	0.096	5.15E-223	1.22E-218
32	ARHGDI3	0.952881641	0.753	0.267	2.23E-199	5.31E-195
32	HLA-C	0.868484598	0.998	0.961	3.15E-166	7.49E-162
32	HLA-B	0.872563625	1	0.968	1.52E-164	3.61E-160
32	HLA-A	0.835177759	1	0.966	8.79E-164	2.09E-159
32	IL32	1.009652094	0.526	0.148	1.62E-157	3.86E-153
32	PFN1	0.90208893	0.998	0.966	1.77E-156	4.20E-152
32	CMC1	1.013545301	0.454	0.122	9.39E-156	2.23E-151
32	TMSB4X	0.831137592	1	0.994	1.28E-152	3.05E-148
32	CCL3	0.789447456	0.275	0.043	1.92E-145	4.58E-141
32	BTG1	1.043186966	0.994	0.904	2.13E-109	5.06E-105
32	LITAF	0.791435211	0.638	0.315	1.13E-106	2.68E-102
32	REL	1.009960471	0.707	0.435	1.03E-92	2.45E-88
32	ID2	0.893564033	0.817	0.601	1.70E-75	4.04E-71
32	TNFRSF18	0.822719587	0.365	0.154	2.01E-58	4.79E-54
33	MMP7	2.418601245	0.736	0.014	0	0
33	CALML5	2.300392977	0.902	0.172	0	0
33	KRT6B	2.142065723	0.845	0.05	0	0
33	KRT77	1.899764577	0.559	0.015	0	0
33	S100P	1.810843326	0.672	0.011	0	0

33	CRABP2	1.742712387	0.858	0.274	0	0
33	KRT6A	1.611909751	0.803	0.118	0	0
33	KRT16	1.535272125	0.71	0.149	0	0
33	GJB2	1.357447904	0.572	0.066	0	0
33	CLIC3	1.311302769	0.625	0.067	0	0
33	WFDC3	1.279203853	0.47	0.007	0	0
33	KRT19	1.12782246	0.47	0.041	0	0
33	CD24	1.051325281	0.555	0.087	0	0
33	GABRP	1.039461652	0.352	0.005	0	0
33	HSD11B2	1.037449161	0.439	0.023	0	0
33	CNFN	0.982055035	0.446	0.045	0	0
33	KRT23	0.972384356	0.496	0.028	0	0
33	GJB6	0.949194943	0.445	0.035	0	0
33	MIA	0.947258834	0.428	0.015	0	0
33	SPTSSB	0.83441039	0.487	0.046	0	0
33	SCGB1D2	0.81286839	0.435	0.034	0	0
33	FXYD3	1.352657478	0.998	0.486	7.49E-256	1.78E-251
33	C19orf33	1.263111888	0.911	0.344	1.07E-250	2.56E-246
33	COX6A1	0.969709185	1	0.876	6.27E-172	1.49E-167
33	QPCT	0.734840569	0.476	0.116	1.39E-167	3.31E-163
33	RHOV	0.824742985	0.596	0.192	2.00E-158	4.75E-154
33	COX4I1	0.868214124	1	0.967	2.20E-155	5.24E-151
33	CLTB	0.954531088	0.987	0.662	2.18E-152	5.18E-148
33	NOV	0.74533392	0.386	0.084	9.77E-152	2.33E-147
33	SPINT1	0.991704897	0.528	0.173	6.85E-150	1.63E-145
33	COX7A2	0.941593412	0.996	0.863	1.89E-149	4.51E-145
33	DEFB1	1.117265432	0.581	0.198	5.54E-149	1.32E-144
33	NDUFA4	0.839980003	0.996	0.877	1.51E-145	3.58E-141
33	CTSD	0.875261449	0.919	0.499	4.23E-145	1.01E-140
33	CD9	0.831408224	1	0.853	6.49E-139	1.54E-134
33	COX5B	0.858618274	0.985	0.858	2.61E-136	6.22E-132
33	COX6C	0.820989982	0.998	0.923	3.71E-136	8.84E-132
33	COX7C	0.770038612	0.998	0.951	2.53E-133	6.03E-129
33	COX8A	0.796154339	0.989	0.744	7.07E-131	1.68E-126
33	ATP1B1	0.727116955	0.467	0.139	3.65E-122	8.68E-118
33	UQCRB	0.80149355	0.985	0.861	1.20E-121	2.85E-117
33	LGALS3	0.734729708	1	0.937	2.43E-113	5.79E-109
33	NDUFA1	0.722441212	0.959	0.683	6.25E-107	1.49E-102
33	COX7B	0.763035454	0.965	0.723	1.80E-104	4.29E-100
33	UQCRQ	0.763058289	0.983	0.765	1.16E-100	2.76E-96
33	NDUFB2	0.729945167	0.954	0.661	6.39E-100	1.52E-95
33	SLC25A5	0.700083808	0.989	0.804	1.71E-99	4.07E-95
33	UQCR11	0.733657005	0.982	0.733	4.81E-96	1.14E-91
33	CHCHD10	0.706755545	0.574	0.334	2.19E-69	5.20E-65
33	CSTA	0.818804092	0.485	0.264	5.12E-47	1.22E-42
34	CCL21	3.787632258	0.868	0.021	0	0
34	TFF3	2.921617146	0.9	0.005	0	0
34	TFPI	1.77641098	0.787	0.168	0	0
34	GNG11	1.676360219	0.863	0.263	0	0
34	CLDN5	1.666213057	0.796	0.084	0	0
34	ANGPT2	1.510682045	0.616	0.102	0	0
34	MMRN1	1.454539541	0.653	0.018	0	0
34	FABP4	1.316217944	0.839	0.134	0	0
34	ECSCR	1.287961032	0.664	0.079	0	0
34	RAMP2	1.25391259	0.727	0.139	0	0
34	LYVE1	1.244656783	0.529	0.009	0	0
34	LAPTM5	1.226876788	0.664	0.104	0	0
34	CAVIN2	1.224055039	0.599	0.069	0	0
34	PPFIBP1	1.097419642	0.618	0.108	0	0
34	EGFL7	1.087899345	0.675	0.098	0	0
34	PCAT19	0.84804836	0.577	0.077	0	0
34	FXYD6	0.783092084	0.482	0.068	0	0
34	KANK3	0.766887161	0.494	0.05	0	0
34	PROX1	0.763104455	0.451	0.01	0	0

34	PTX3	0.742485843	0.423	0.02	0	0
34	PDPN	0.738372116	0.464	0.064	0	0
34	TM4SF18	0.703352019	0.484	0.053	0	0
34	TIE1	0.70144159	0.475	0.038	0	0
34	LMO2	0.925497539	0.464	0.068	1.41E-305	3.36E-301
34	SNCG	1.146589384	0.659	0.138	2.45E-296	5.82E-292
34	TM4SF1	0.859599852	0.904	0.29	3.97E-248	9.45E-244
34	NRP2	0.711756706	0.453	0.082	9.41E-228	2.24E-223
34	HYAL2	0.832221662	0.506	0.113	2.41E-205	5.73E-201
34	ELK3	0.724899073	0.475	0.105	5.01E-193	1.19E-188
34	GYPC	1.048858264	0.677	0.233	2.16E-191	5.15E-187
34	IGFBP7	1.194394648	0.998	0.646	6.10E-185	1.45E-180
34	TMSB10	0.906636115	1	0.973	1.68E-175	4.00E-171
34	S100A10	0.845777213	1	0.896	3.26E-152	7.77E-148
34	ARHGAP29	0.719356289	0.56	0.174	9.70E-151	2.31E-146
34	ATP5F1E	0.800524636	0.998	0.958	7.59E-146	1.81E-141
34	FN1	0.93281648	0.622	0.221	2.36E-136	5.62E-132
34	APP	0.7724002	0.866	0.482	9.85E-133	2.34E-128
34	FABP5	0.725207636	0.946	0.534	1.63E-130	3.88E-126
34	SOX4	1.108268916	0.807	0.402	6.85E-129	1.63E-124
34	GNAS	0.839930327	0.937	0.64	7.29E-129	1.74E-124
34	CRIP2	0.728643878	0.846	0.427	2.89E-126	6.88E-122
34	TIMP3	0.7098244	0.837	0.395	3.61E-121	8.58E-117
34	VIM	0.835799029	1	0.711	3.17E-118	7.55E-114
34	RAB11A	0.661827357	0.853	0.501	9.39E-117	2.23E-112
34	HLA-E	0.722983127	0.996	0.882	4.16E-112	9.91E-108
34	LIMS1	0.700431932	0.544	0.22	3.30E-106	7.85E-102
34	CD59	0.657360185	0.942	0.614	1.79E-98	4.25E-94
34	CD9	0.73173519	0.991	0.853	3.29E-88	7.83E-84
34	STMN1	0.669963326	0.605	0.304	4.22E-80	1.00E-75
34	EFEMP1	0.840029648	0.508	0.209	1.21E-73	2.89E-69
35	GPM6B	2.009057061	0.852	0.097	0	0
35	S100B	1.928385347	0.739	0.018	0	0
35	PLP1	1.690902968	0.722	0.056	0	0
35	CDH19	1.459282141	0.682	0.004	0	0
35	SCN7A	1.343229973	0.593	0.008	0	0
35	SEMA3B	1.25019197	0.627	0.042	0	0
35	MPZ	1.151512118	0.508	0.005	0	0
35	NRXN1	1.150922009	0.581	0.001	0	0
35	GFRA3	1.142400045	0.504	0.002	0	0
35	LGI4	1.10493609	0.562	0.068	0	0
35	PCSK2	1.09346059	0.443	0.007	0	0
35	NTM	0.785911691	0.384	0.023	0	0
35	PMP2	0.777112724	0.324	0.003	0	0
35	SOX2	0.731561351	0.381	0.007	0	0
35	L1CAM	0.71930895	0.379	0.007	0	0
35	PLAT	0.686847306	0.373	0.041	0	0
35	COL9A3	0.659826508	0.35	0.026	0	0
35	MAL	0.651503841	0.381	0.013	0	0
35	VWA1	1.26902954	0.593	0.116	2.36E-304	5.61E-300
35	HSPA12A	0.648836485	0.348	0.04	4.41E-285	1.05E-280
35	PMP22	1.503825132	0.932	0.375	6.83E-269	1.63E-264
35	CADM1	0.810498181	0.434	0.069	3.64E-260	8.66E-256
35	CADM3	0.719035805	0.36	0.045	3.21E-259	7.64E-255
35	TUBB2B	0.70488406	0.333	0.044	3.22E-230	7.67E-226
35	CRYAB	1.781762761	0.951	0.443	9.78E-227	2.33E-222
35	MATN2	1.05726672	0.504	0.117	3.41E-206	8.11E-202
35	CLU	1.053755305	0.892	0.352	1.60E-184	3.81E-180
35	CD9	1.179811225	0.998	0.853	1.31E-181	3.13E-177
35	NGFR	0.682540424	0.348	0.059	4.61E-180	1.10E-175
35	PRNP	1.135736709	0.93	0.547	8.65E-147	2.06E-142
35	FXD1	1.037195454	0.633	0.245	9.03E-145	2.15E-140
35	NDRG2	1.075499701	0.597	0.233	8.53E-140	2.03E-135
35	TMEM176B	0.78769266	0.504	0.156	6.42E-127	1.53E-122

35	TUBA1A	0.935506928	0.985	0.673	4.26E-115	1.01E-110
35	RARRES2	0.727987791	0.542	0.196	5.54E-105	1.32E-100
35	CD59	0.726574335	0.958	0.614	2.01E-101	4.78E-97
35	S100A10	0.659312797	1	0.896	1.84E-100	4.39E-96
35	NRN1	0.725278788	0.462	0.164	2.05E-96	4.89E-92
35	CNN3	0.847691092	0.612	0.33	1.46E-87	3.48E-83
35	VIM	0.66681138	1	0.711	9.22E-87	2.20E-82
35	LTBP4	0.765230649	0.506	0.216	7.71E-86	1.83E-81
35	RHOB	0.658495799	0.862	0.519	1.35E-78	3.22E-74
35	AP1S2	0.664987873	0.445	0.185	5.35E-75	1.27E-70
35	PEBP1	0.660849856	0.992	0.822	3.46E-74	8.24E-70
35	CLIC4	0.691633562	0.473	0.216	1.04E-71	2.48E-67
35	DKK3	0.804705362	0.439	0.186	1.32E-71	3.14E-67
35	PDLIM4	0.658918963	0.46	0.225	8.77E-63	2.09E-58
35	S100A4	0.787427809	0.972	0.675	1.43E-59	3.40E-55
35	PLPP1	0.661726413	0.413	0.202	1.02E-49	2.43E-45
35	FOS	0.647695755	0.985	0.787	1.37E-33	3.25E-29
36	COCH	4.587863498	0.98	0.012	0	0
36	ASPN	2.093967515	0.919	0.113	0	0
36	OGN	1.430011083	0.853	0.07	0	0
36	CRABP1	1.413014211	0.777	0.018	0	0
36	TNN	1.375056253	0.77	0.013	0	0
36	TNMD	1.33576949	0.639	0.032	0	0
36	CTSK	1.30938624	0.965	0.212	0	0
36	CYP1B1	1.266863792	0.702	0.104	0	0
36	FIBIN	1.221337254	0.753	0.057	0	0
36	PLXDC1	1.177110388	0.716	0.074	0	0
36	FMOD	1.092314116	0.751	0.124	0	0
36	PRELP	1.068638136	0.766	0.133	0	0
36	PLPP5	1.068631172	0.628	0.075	0	0
36	EMID1	0.971339622	0.674	0.05	0	0
36	F13A1	0.829924394	0.606	0.056	0	0
36	DKK2	0.827060358	0.637	0.071	0	0
36	SLITRK6	0.79326617	0.414	0.009	0	0
36	LTBP4	1.226312451	0.832	0.214	2.64E-306	6.29E-302
36	IGFBP5	1.753557199	0.882	0.237	1.34E-299	3.19E-295
36	MMP23B	0.7696756	0.663	0.118	1.31E-287	3.12E-283
36	PTGDS	1.282483474	0.923	0.264	1.40E-272	3.34E-268
36	TWIST2	1.041087316	0.729	0.152	5.80E-272	1.38E-267
36	MEG3	0.910712478	0.794	0.184	5.19E-247	1.23E-242
36	FN1	0.938859311	0.829	0.22	1.98E-241	4.70E-237
36	DPT	1.200670257	0.748	0.172	1.12E-240	2.67E-236
36	HTRA1	1.268294596	0.888	0.276	1.81E-240	4.30E-236
36	ANGPTL2	0.98914892	0.685	0.161	5.00E-235	1.19E-230
36	MXRA5	0.808333602	0.621	0.133	6.25E-229	1.49E-224
36	TCF4	1.171514817	0.875	0.332	1.44E-217	3.43E-213
36	MFAP4	1.270502212	0.877	0.276	8.11E-216	1.93E-211
36	SPARCL1	1.256182024	0.937	0.347	2.79E-209	6.64E-205
36	COL1A2	1.064465458	0.996	0.478	2.52E-204	6.01E-200
36	PCOLCE	0.964442223	0.915	0.321	2.48E-198	5.89E-194
36	THY1	0.824925623	0.805	0.214	6.43E-198	1.53E-193
36	COL1A1	0.853076187	0.991	0.49	5.32E-197	1.27E-192
36	ZBTB20	0.902884268	0.814	0.3	6.07E-187	1.45E-182
36	PGRMC1	0.977233779	0.775	0.296	2.85E-179	6.78E-175
36	TIMP2	0.783409934	0.827	0.287	5.85E-168	1.39E-163
36	SOD3	0.956198455	0.93	0.397	7.36E-164	1.75E-159
36	SELENOP	0.935136041	0.972	0.634	5.59E-162	1.33E-157
36	S100A6	0.914219191	1	0.826	1.15E-157	2.74E-153
36	EID1	0.846773542	0.969	0.676	3.26E-157	7.75E-153
36	DCN	0.827337175	0.996	0.561	1.83E-154	4.35E-150
36	LUM	1.056753279	0.823	0.307	7.58E-154	1.80E-149
36	PMP22	0.832707256	0.867	0.376	1.59E-149	3.77E-145
36	LGALS1	0.912810977	1	0.672	4.60E-149	1.09E-144
36	S100A10	0.905465304	0.998	0.896	4.53E-147	1.08E-142

36	CRABP2	0.808207809	0.748	0.276	3.05E-140	7.26E-136
36	FBLN1	0.783660549	0.814	0.311	5.63E-136	1.34E-131
36	MFGE8	0.817145817	0.735	0.366	5.93E-87	1.41E-82
37	DES	4.284391208	1	0.042	0	0
37	ACTG2	3.867379452	0.998	0.056	0	0
37	TPM2	3.479176231	1	0.226	0	0
37	MYLK	3.394203876	1	0.143	0	0
37	TAGLN	3.30341389	1	0.294	0	0
37	ACTA2	3.14753383	1	0.184	0	0
37	PCP4	3.124362747	0.991	0.017	0	0
37	MYL9	3.083517273	1	0.458	0	0
37	CNN1	3.036054118	1	0.058	0	0
37	MYH11	2.955725941	1	0.078	0	0
37	TPM1	2.823991083	1	0.353	0	0
37	CSRP1	2.696724226	1	0.258	0	0
37	ACTA1	2.425390955	0.899	0.01	0	0
37	PPP1R14A	2.395470753	0.998	0.106	0	0
37	FLNA	2.310710265	0.995	0.36	0	0
37	SYNPO2	2.296828007	0.984	0.115	0	0
37	LPP	1.984260224	0.982	0.213	0	0
37	ACTC1	1.948728633	0.624	0.011	0	0
37	SMTN	1.940001005	0.982	0.209	0	0
37	PDLIM7	1.86699841	0.995	0.15	0	0
37	PLN	1.713894912	0.961	0.056	0	0
37	ACTN1	1.68966222	0.982	0.268	0	0
37	FHL1	1.662564118	0.982	0.26	0	0
37	SYNM	1.647633015	0.904	0.034	0	0
37	SLMAP	1.60876428	0.954	0.137	0	0
37	RAMP1	1.552676012	0.936	0.071	0	0
37	CFL2	1.53186779	0.945	0.099	0	0
37	LMOD1	1.47211917	0.954	0.076	0	0
37	ITGA8	1.454206015	0.869	0.029	0	0
37	PALLD	1.42718913	0.943	0.226	0	0
37	NEXN	1.414221586	0.911	0.089	0	0
37	ILK	1.387080092	0.952	0.26	0	0
37	FLNC	1.377895025	0.849	0.022	0	0
37	PPP1R12B	1.373168148	0.936	0.086	0	0
37	ALDH1B1	1.37288892	0.826	0.023	0	0
37	SCRG1	1.326032728	0.745	0.017	0	0
37	SORBS2	1.311658242	0.849	0.086	0	0
37	PDLIM3	1.287276682	0.915	0.064	0	0
37	SORBS1	1.268101776	0.897	0.045	0	0
37	TNS1	1.223795261	0.911	0.137	0	0
37	CKB	1.67434781	0.986	0.436	9.98E-306	2.37E-301
37	FN1	1.245146484	0.908	0.219	1.05E-303	2.49E-299
37	CALD1	1.929357798	0.995	0.579	1.31E-281	3.11E-277
37	ACTB	1.724710465	1	0.995	5.66E-270	1.35E-265
37	DSTN	1.647221248	1	0.917	3.59E-264	8.56E-260
37	MYL6	1.29358052	1	0.993	2.42E-261	5.76E-257
37	NDUFA4	1.356294227	1	0.877	6.93E-251	1.65E-246
37	CD151	1.295157997	0.966	0.438	1.50E-247	3.58E-243
37	ITGB1	1.34635313	0.989	0.55	8.84E-247	2.10E-242
37	SELENOM	1.284396491	0.982	0.486	1.79E-219	4.26E-215
38	MALAT1	1.75317808	1	0.997	6.10E-217	1.45E-212
38	NEAT1	1.61107729	0.995	0.959	4.10E-133	9.76E-129
38	LYPD3	0.370556623	0.95	0.456	4.78E-70	1.14E-65
38	CSNK1A1	0.58407531	0.913	0.597	2.00E-48	4.75E-44
38	CCNLI	0.553732807	0.945	0.638	2.40E-46	5.71E-42
38	HNRNPH1	0.543060378	0.926	0.586	4.33E-44	1.03E-39
38	XIST	0.794581298	0.685	0.451	3.86E-42	9.19E-38
38	CD44	0.699953721	0.975	0.784	5.69E-41	1.35E-36
38	SAT1	1.040669043	0.985	0.792	2.31E-40	5.49E-36
38	ATP1A1	0.536762799	0.948	0.632	2.28E-37	5.42E-33
38	EIF5B	0.580864014	0.811	0.561	1.12E-36	2.67E-32

38	CD55	0.443635994	0.797	0.481	3.27E-33	7.77E-29
38	INTS6	0.571109989	0.727	0.481	4.11E-33	9.77E-29
38	TRA2B	0.493680465	0.734	0.525	4.98E-30	1.18E-25
38	REL	0.360602768	0.705	0.436	1.02E-29	2.44E-25
38	BAZ1A	0.391433921	0.725	0.456	5.80E-29	1.38E-24
38	EMP2	0.366465577	0.888	0.563	7.69E-29	1.83E-24
38	HNRNPDL	0.405892881	0.968	0.712	7.06E-28	1.68E-23
38	SLC38A2	0.414465993	0.983	0.687	4.97E-27	1.18E-22
38	FUS	0.448242606	0.99	0.76	2.82E-26	6.71E-22
38	SRSF2	0.593906271	0.99	0.789	4.30E-26	1.02E-21
38	SRSF5	0.365831095	0.918	0.64	9.22E-26	2.19E-21
38	DNAJB6	0.418766482	0.99	0.725	1.36E-25	3.24E-21
38	CLDN4	0.568485908	0.377	0.207	4.07E-23	9.69E-19
38	LMNA	0.376738957	0.995	0.961	1.13E-22	2.70E-18
38	LUC7L3	0.417416478	0.615	0.451	4.25E-21	1.01E-16
38	KLF6	0.363562293	0.973	0.708	7.45E-21	1.77E-16
38	TAF1D	0.567456766	0.496	0.386	6.25E-20	1.49E-15
38	PNISR	0.40133791	0.648	0.489	6.64E-20	1.58E-15
38	AC020916.1	0.678832942	0.375	0.251	8.68E-19	2.07E-14
38	HES1	0.518836164	0.963	0.598	1.34E-16	3.18E-12
38	LDLR	0.486587773	0.278	0.175	6.59E-14	1.57E-09
38	CCNL2	0.38656187	0.268	0.173	2.87E-12	6.83E-08
38	EHF	0.436306056	0.28	0.182	7.80E-12	1.86E-07
38	SRRM2	0.380764003	0.553	0.469	5.49E-10	1.31E-05
38	EPHA2	0.389430908	0.293	0.213	3.94E-09	9.38E-05
38	NXF1	0.520932851	0.347	0.296	8.29E-09	0.000197379
38	IER2	0.374057387	0.995	0.809	3.53E-08	0.000839224
38	THUMPD3-AS1	0.497189123	0.32	0.27	7.51E-08	0.001787626
38	IVNS1ABP	0.374774642	0.275	0.208	8.71E-08	0.002072757
38	KCNQ1OT1	0.437881491	0.305	0.25	4.45E-07	0.010598143
38	MACF1	0.37765524	0.27	0.22	1.48E-06	0.035219248
38	JUN	0.374136961	0.998	0.86	1.98E-06	0.047043082
38	ABHD5	0.457923509	0.345	0.317	6.91E-06	0.164347258
38	DUSP1	0.377707457	0.988	0.841	7.42E-06	0.176535164
38	MAP2K3	0.425103833	0.337	0.331	0.000139874	1
38	VMP1	0.493668322	0.347	0.348	0.000167731	1
38	TLE4	0.419330602	0.29	0.273	0.000230919	1
38	ACADVL	0.409044842	0.32	0.342	0.004146335	1
38	EFNA1	0.364001799	0.285	0.282	0.007983029	1
39	CLDN5	2.630217418	0.991	0.086	0	0
39	SLC9A3R2	2.29259568	0.962	0.165	0	0
39	RAMP2	1.955831653	0.984	0.14	0	0
39	A2M	1.609904264	0.962	0.195	0	0
39	PECAM1	1.449323668	0.927	0.095	0	0
39	CLEC14A	1.425563384	0.826	0.08	0	0
39	ICAM2	1.384880839	0.87	0.067	0	0
39	PODXL	1.268184416	0.794	0.036	0	0
39	ECSCR	1.224592929	0.848	0.08	0	0
39	EGFL7	1.223752058	0.848	0.1	0	0
39	ESAM	1.206237454	0.858	0.118	0	0
39	SOX17	1.199327851	0.728	0.044	0	0
39	RNASE1	1.114342912	0.896	0.104	0	0
39	GIMAP7	1.107593264	0.772	0.079	0	0
39	SEMA3G	1.096175769	0.747	0.016	0	0
39	CDH5	1.058336175	0.775	0.064	0	0
39	GJA4	1.018641607	0.671	0.071	0	0
39	IGFBP3	1.693770524	0.756	0.117	3.39E-305	8.06E-301
39	HYAL2	1.079494498	0.741	0.113	3.54E-298	8.42E-294
39	EPAS1	1.38584343	0.915	0.203	4.98E-285	1.18E-280
39	DEPP1	1.141236104	0.684	0.096	7.64E-283	1.82E-278
39	BST2	1.350738056	0.905	0.209	1.93E-261	4.59E-257
39	SRGN	1.080707903	0.953	0.191	2.58E-255	6.14E-251
39	TM4SF1	1.78297963	0.991	0.292	2.29E-246	5.45E-242
39	KCTD12	1.462421455	0.839	0.193	1.48E-244	3.53E-240

39	GNG11	1.573635353	0.962	0.265	1.71E-242	4.07E-238
39	BCAM	1.179491202	0.915	0.209	5.53E-241	1.32E-236
39	NPDC1	1.043174641	0.826	0.187	3.39E-220	8.06E-216
39	IFI27	2.001714003	1	0.475	1.02E-206	2.44E-202
39	KLF2	1.19379305	0.839	0.215	5.45E-206	1.30E-201
39	SRP14	1.747867135	1	0.95	1.75E-202	4.16E-198
39	IFI6	1.237448036	0.842	0.221	7.27E-201	1.73E-196
39	PLPP1	1.224578459	0.797	0.201	1.57E-198	3.75E-194
39	CRIP2	1.418469967	0.968	0.428	1.04E-194	2.49E-190
39	FN1	1.426290706	0.82	0.221	1.37E-173	3.27E-169
39	STOM	1.157282516	0.886	0.324	1.19E-171	2.84E-167
39	ISG15	1.070035035	0.801	0.213	2.75E-171	6.54E-167
39	IFITM1	1.126918909	0.858	0.272	6.14E-167	1.46E-162
39	CAV1	1.381706788	0.994	0.657	5.61E-163	1.34E-158
39	ADAM15	1.011551149	0.778	0.229	8.28E-162	1.97E-157
39	IFITM3	1.243077944	1	0.761	6.97E-149	1.66E-144
39	STMN1	1.12990012	0.851	0.304	1.42E-142	3.39E-138
39	TMSB10	1.10105891	1	0.973	6.13E-141	1.46E-136
39	HLA-E	1.029238396	0.997	0.883	2.01E-136	4.80E-132
39	ID1	1.364675409	0.88	0.405	8.73E-136	2.08E-131
39	SPARCL1	1.026575227	0.94	0.349	4.58E-133	1.09E-128
39	TIMP3	1.019226416	0.877	0.396	4.44E-107	1.06E-102
39	TXNIP	1.024922384	0.896	0.528	8.64E-98	2.06E-93
39	ADAMTS1	1.009633011	0.696	0.244	5.96E-94	1.42E-89
39	SAT1	1.274865615	0.965	0.792	3.10E-71	7.38E-67
40	LYZ	1.165548531	0.581	0.05	0	0
40	HLA-DPB1	1.56746326	0.898	0.191	1.95E-274	4.65E-270
40	HLA-DRA	1.338752443	0.984	0.238	8.08E-257	1.92E-252
40	HLA-DPA1	1.268813144	0.812	0.173	6.02E-222	1.43E-217
40	HLA-DQA1	0.916345225	0.591	0.098	3.54E-192	8.42E-188
40	CD74	1.341749734	1	0.371	3.41E-182	8.11E-178
40	LST1	0.914433495	0.415	0.052	2.84E-181	6.75E-177
40	FCER1A	0.648176414	0.313	0.034	4.60E-156	1.09E-151
40	HLA-DQB1	0.962055929	0.578	0.136	5.24E-129	1.25E-124
40	HLA-DRB1	0.905910925	0.703	0.204	3.70E-119	8.80E-115
40	TYROBP	0.654495039	0.422	0.076	2.82E-109	6.71E-105
40	AIF1	0.77615561	0.355	0.059	5.64E-107	1.34E-102
40	TMSB4X	0.9983058	1	0.994	2.57E-103	6.12E-99
40	CST3	1.090796716	0.997	0.797	1.62E-94	3.87E-90
40	FCER1G	0.592859044	0.326	0.069	4.06E-70	9.65E-66
40	TMSB10	0.736686975	1	0.973	6.76E-69	1.61E-64
40	ACTB	0.731514155	1	0.995	4.79E-52	1.14E-47
40	RPL28	0.463647545	1	0.999	3.42E-48	8.14E-44
40	FTH1	0.521719789	1	0.951	4.35E-43	1.04E-38
40	FTL	0.571576889	1	0.97	4.43E-38	1.05E-33
40	PFN1	0.517411592	1	0.966	1.22E-34	2.91E-30
40	SAT1	0.490623522	1	0.792	1.56E-32	3.72E-28
40	S100A4	0.355355643	0.994	0.676	8.91E-30	2.12E-25
40	NAMPT	0.301592155	0.869	0.465	9.72E-29	2.31E-24
40	RPS23	0.330957762	1	0.999	6.94E-28	1.65E-23
40	EMP3	0.279098885	0.78	0.413	9.90E-27	2.36E-22
40	RPL27A	0.33020365	1	1	1.44E-25	3.42E-21
40	TPM3	0.315038582	0.802	0.449	3.97E-25	9.45E-21
40	RPS29	0.331619323	1	0.999	9.27E-25	2.21E-20
40	ATP5F1E	0.468165735	1	0.958	1.76E-24	4.20E-20
40	AP2S1	0.314386203	0.869	0.504	1.08E-23	2.57E-19
40	HIGD2A	0.271971046	0.888	0.528	7.32E-21	1.74E-16
40	RPS11	0.368279535	1	0.999	1.36E-20	3.24E-16
40	RPS20	0.341146563	1	0.999	2.55E-20	6.08E-16
40	RPS24	0.268283318	1	0.998	4.53E-20	1.08E-15
40	ARPC3	0.416637737	0.971	0.688	8.79E-20	2.09E-15
40	HLA-DMA	0.426590773	0.284	0.126	9.44E-20	2.25E-15
40	ARPC5	0.260980562	0.805	0.477	2.50E-19	5.95E-15
40	RPS13	0.30914329	1	0.999	4.13E-19	9.82E-15

40	S100A10	0.322675847	1	0.897	2.36E-18	5.62E-14
40	GNG5	0.2773642	0.939	0.591	4.37E-18	1.04E-13
40	RPL19	0.268978352	1	1	4.58E-17	1.09E-12
40	RPL21	0.280439609	1	1	8.39E-14	2.00E-09
40	SH3BGRL3	0.389669653	0.997	0.789	9.95E-14	2.37E-09
40	TUBA1B	0.454347333	0.994	0.934	4.89E-13	1.16E-08
40	COTL1	0.507549575	0.31	0.186	7.07E-13	1.68E-08
40	ARPC2	0.323601965	0.994	0.878	9.58E-13	2.28E-08
40	UBA52	0.275134977	1	0.998	4.34E-11	1.03E-06
40	OAZ1	0.319397332	1	0.983	3.57E-09	8.49E-05
40	YBX1	0.289433119	1	0.982	4.11E-06	0.09785014
41	ANGPTL7	1.917961601	0.408	0.004	0	0
41	FGFBP2	1.115660692	0.525	0.025	0	0
41	ENTPD2	0.577128204	0.317	0.015	0	0
41	ABCA8	0.911104946	0.673	0.094	5.92E-253	1.41E-248
41	APOD	3.722124619	1	0.368	4.21E-239	1.00E-234
41	PODNL1	0.60164266	0.419	0.039	5.04E-238	1.20E-233
41	GPC3	1.018382908	0.665	0.095	8.51E-237	2.03E-232
41	CYP1B1	1.189987992	0.616	0.106	1.04E-185	2.47E-181
41	VIT	0.582299364	0.437	0.055	7.24E-179	1.72E-174
41	LTBP4	1.195298821	0.81	0.216	7.56E-179	1.80E-174
41	CFH	1.132676845	0.852	0.22	4.77E-159	1.13E-154
41	C2orf40	0.94209414	0.433	0.061	3.16E-156	7.53E-152
41	LUM	1.33169353	0.933	0.308	9.76E-155	2.32E-150
41	PTGDS	1.747022439	0.838	0.267	5.93E-141	1.41E-136
41	IGFBP6	1.187525659	0.683	0.161	7.30E-139	1.74E-134
41	GSN	1.351350402	1	0.742	4.68E-125	1.11E-120
41	PDGFRL	0.61135019	0.553	0.122	4.82E-109	1.15E-104
41	DCN	0.992297013	1	0.562	5.90E-109	1.40E-104
41	RARRES2	0.679885571	0.718	0.197	6.91E-108	1.64E-103
41	MEG3	0.908662777	0.651	0.187	4.49E-94	1.07E-89
41	AKAP12	0.574974432	0.5	0.12	1.99E-91	4.73E-87
41	IGFBP7	1.017415663	0.996	0.648	1.08E-87	2.57E-83
41	NGFR	0.645441191	0.331	0.061	1.34E-84	3.19E-80
41	CST3	0.723056448	1	0.797	1.02E-75	2.42E-71
41	C1S	0.585409052	0.87	0.352	2.28E-75	5.44E-71
41	SERPING1	0.694466116	0.88	0.427	2.20E-73	5.23E-69
41	PLAC9	0.751702092	0.817	0.365	6.25E-73	1.49E-68
41	SERPINF1	0.840478852	0.835	0.388	1.82E-70	4.34E-66
41	TIMP1	0.726265881	0.944	0.588	3.60E-67	8.57E-63
41	TCF4	0.667387134	0.75	0.335	8.07E-66	1.92E-61
41	LAPTM4A	0.689686867	0.996	0.9	1.64E-64	3.91E-60
41	LGALS1	0.638507314	1	0.673	2.09E-63	4.98E-59
41	S100A6	0.624184882	1	0.827	1.70E-59	4.06E-55
41	DKK3	0.540418177	0.535	0.186	5.68E-59	1.35E-54
41	CNN3	0.622056326	0.725	0.331	5.78E-59	1.37E-54
41	EID1	0.564777233	0.954	0.677	3.57E-58	8.50E-54
41	CD63	0.56531074	0.996	0.849	7.86E-56	1.87E-51
41	SPARCL1	0.58577384	0.782	0.35	1.70E-55	4.05E-51
41	ZBTB20	0.594133081	0.658	0.303	1.97E-54	4.68E-50
41	LHFPL6	0.658908401	0.63	0.266	2.27E-52	5.40E-48
41	FN1	0.797374777	0.57	0.223	1.34E-50	3.19E-46
41	SPTBN1	0.544386368	0.602	0.278	5.49E-46	1.31E-41
41	CEBPD	0.90681611	0.958	0.821	1.37E-34	3.26E-30
41	CCL2	0.738869813	0.739	0.506	2.76E-25	6.57E-21
41	HES1	0.636188541	0.796	0.6	9.69E-23	2.31E-18
41	CYR61	0.567053193	0.722	0.526	1.32E-22	3.14E-18
41	TXNIP	0.550874845	0.68	0.529	7.19E-22	1.71E-17
41	JUN	0.727094856	0.954	0.861	1.93E-21	4.60E-17
41	ID3	0.702068905	0.81	0.666	1.81E-20	4.30E-16
41	EGR1	0.614423456	0.715	0.605	3.11E-17	7.39E-13
42	IGHM	1.699141327	0.76	0.004	0	0
42	CD37	1.594294943	0.909	0.07	0	0
42	CD79A	1.348593148	0.635	0.008	0	0

42	MS4A1	1.227547232	0.558	0.001	0	0
42	LTB	1.209008924	0.731	0.043	0	0
42	CCR7	1.152600193	0.519	0.028	0	0
42	LY9	0.986334089	0.457	0.01	0	0
42	IGKC	0.882239349	0.75	0.052	0	0
42	SPIB	0.798779183	0.476	0.008	0	0
42	JCHAIN	0.746904806	0.308	0.01	0	0
42	RUBCNL	0.659340863	0.423	0.017	0	0
42	LAPTM5	1.354754596	0.827	0.107	8.86E-260	2.11E-255
42	CD69	1.367685664	0.524	0.045	4.79E-241	1.14E-236
42	CD52	1.012808261	0.663	0.07	3.84E-235	9.15E-231
42	RHOH	0.713761913	0.471	0.037	1.72E-232	4.09E-228
42	CXCR4	1.687804215	0.755	0.1	1.38E-230	3.28E-226
42	HLA-DQA1	0.998022068	0.774	0.098	3.63E-228	8.63E-224
42	HLA-DQB1	1.105404027	0.88	0.136	9.79E-225	2.33E-220
42	CORO1A	0.778892952	0.639	0.07	2.75E-219	6.54E-215
42	IRF8	1.007365627	0.519	0.049	3.79E-218	9.02E-214
42	CD83	1.335279687	0.784	0.123	8.97E-205	2.13E-200
42	HLA-DPB1	1.012057459	0.942	0.192	1.48E-184	3.52E-180
42	CD48	0.741005822	0.476	0.05	1.29E-173	3.08E-169
42	HLA-DRA	1.371111135	0.981	0.24	1.29E-173	3.08E-169
42	HLA-DPA1	0.894848202	0.904	0.174	6.20E-172	1.48E-167
42	CYTIP	0.724834944	0.519	0.061	6.04E-162	1.44E-157
42	LIMD2	0.649408663	0.476	0.058	6.22E-150	1.48E-145
42	GPR183	1.493655834	0.591	0.088	2.95E-143	7.01E-139
42	HLA-DRB1	1.048637383	0.885	0.204	4.94E-139	1.18E-134
42	CD74	1.589901878	1	0.372	6.35E-136	1.51E-131
42	STK4	0.84015579	0.644	0.131	3.29E-119	7.84E-115
42	RPS27	0.891519052	1	1	2.71E-102	6.45E-98
42	PHACTR1	0.6836596	0.423	0.065	4.14E-101	9.86E-97
42	NFKBID	0.857227756	0.562	0.121	7.98E-97	1.90E-92
42	RPS29	0.802042497	1	0.999	5.43E-89	1.29E-84
42	RPL21	0.712276234	1	1	1.48E-88	3.51E-84
42	RPLP2	0.714895566	1	1	2.13E-88	5.07E-84
42	CREM	1.122629502	0.688	0.214	1.09E-76	2.59E-72
42	RPL23A	0.63209855	1	1	1.84E-74	4.38E-70
42	REL	1.042134273	0.856	0.436	8.55E-69	2.04E-64
42	RPL39	0.643032453	1	0.999	2.18E-68	5.18E-64
42	CYBA	0.922173306	0.774	0.339	5.82E-60	1.39E-55
42	EZR	0.952167091	0.909	0.537	3.26E-58	7.77E-54
42	BIRC3	0.762097307	0.524	0.173	4.55E-47	1.08E-42
42	HERPUD1	1.25535563	0.875	0.676	1.13E-45	2.69E-41
42	SRGN	0.713030693	0.562	0.194	9.90E-41	2.36E-36
42	HSPE1	0.767171149	0.918	0.793	2.44E-29	5.81E-25
42	NR4A2	0.694867368	0.534	0.267	4.10E-24	9.76E-20
42	IRF7	0.932144458	0.293	0.123	3.48E-18	8.28E-14
42	RGS2	1.160257626	0.332	0.197	1.73E-09	4.12E-05
43	CCL19	3.295404518	1	0.054	0	0
43	CCL21	2.172874125	0.826	0.027	0	0
43	STEAP4	1.063857652	0.669	0.087	3.63E-170	8.63E-166
43	LGI4	0.745365022	0.593	0.071	6.51E-158	1.55E-153
43	GGT5	1.014590347	0.773	0.132	7.96E-148	1.89E-143
43	RERG	0.757752666	0.622	0.085	2.13E-146	5.07E-142
43	SYNPO2	0.917036464	0.703	0.12	4.16E-131	9.91E-127
43	NR2F2	1.101259692	0.773	0.161	9.69E-124	2.31E-119
43	GPX3	1.077021213	0.82	0.189	1.51E-112	3.59E-108
43	TINAGL1	1.022110179	0.756	0.158	9.00E-110	2.14E-105
43	ACTA2	1.349502306	0.814	0.188	4.05E-106	9.63E-102
43	ANGPT2	0.681699547	0.622	0.106	8.57E-105	2.04E-100
43	EPS8	0.788314149	0.738	0.165	1.46E-104	3.49E-100
43	FGF7	0.927165108	0.698	0.145	1.67E-104	3.98E-100
43	TAGLN	1.544495814	0.924	0.298	3.05E-102	7.27E-98
43	FILIP1L	0.890587656	0.68	0.159	5.73E-91	1.36E-86
43	ISYNA1	0.780725358	0.558	0.104	1.77E-90	4.22E-86

43	RARRES2	0.873501917	0.779	0.198	4.47E-88	1.06E-83
43	CPE	0.970001477	0.86	0.257	6.46E-86	1.54E-81
43	LHFPL6	0.886719458	0.837	0.267	7.18E-83	1.71E-78
43	IGFBP5	1.596468375	0.785	0.24	2.37E-81	5.64E-77
43	DEPP1	0.823529882	0.512	0.098	1.81E-76	4.31E-72
43	CALD1	1.320147685	0.965	0.582	2.73E-75	6.49E-71
43	C2orf40	1.094682095	0.39	0.062	5.08E-74	1.21E-69
43	PRRX1	0.840273724	0.75	0.222	8.55E-74	2.04E-69
43	MYL9	1.035846261	0.948	0.461	2.35E-73	5.60E-69
43	IGFBP7	1.37405633	0.994	0.648	9.70E-73	2.31E-68
43	TIMP3	1.244190994	0.878	0.398	3.32E-72	7.90E-68
43	RGS5	0.852002686	0.5	0.093	6.93E-72	1.65E-67
43	TFPI	0.735915244	0.669	0.172	8.47E-72	2.02E-67
43	IFITM3	1.060908002	1	0.762	4.02E-70	9.57E-66
43	ID4	0.996048038	0.762	0.255	7.11E-69	1.69E-64
43	FHL2	0.744500275	0.64	0.18	2.87E-66	6.84E-62
43	CTSC	0.895164251	0.721	0.237	3.68E-66	8.75E-62
43	IFITM1	0.820206828	0.797	0.274	7.39E-66	1.76E-61
43	RGS16	1.545432195	0.797	0.316	1.23E-60	2.92E-56
43	C11orf96	0.716383798	0.68	0.196	4.19E-58	9.97E-54
43	SELENOM	0.734511573	0.942	0.488	1.09E-51	2.59E-47
43	CCL8	0.733911887	0.291	0.047	5.40E-51	1.29E-46
43	ADIRF	0.760996151	0.983	0.634	1.09E-50	2.59E-46
43	TGFBI	1.054472696	0.721	0.283	4.13E-50	9.83E-46
43	SERPING1	0.792192871	0.872	0.428	1.71E-49	4.07E-45
43	C1S	0.670600925	0.866	0.353	2.33E-48	5.55E-44
43	IFITM2	0.77474756	0.919	0.561	4.32E-46	1.03E-41
43	S100A4	0.825083728	0.988	0.677	9.52E-45	2.27E-40
43	CCL2	1.095219335	0.89	0.506	2.25E-43	5.35E-39
43	TPM1	0.737803269	0.744	0.356	6.38E-40	1.52E-35
43	7-Sep	0.721821715	0.866	0.631	3.78E-39	9.00E-35
43	NDUFA4L2	0.895656854	0.593	0.242	6.73E-34	1.60E-29
43	CYR61	0.745764061	0.744	0.526	1.50E-19	3.58E-15
44	IGKC	7.284640366	0.756	0.053	0	0
44	IGLC3	7.077897969	0.774	0.025	0	0
44	IGLC2	6.67108764	0.72	0.019	0	0
44	IGHG1	6.559663056	0.915	0.013	0	0
44	IGHG3	6.440959484	0.933	0.019	0	0
44	JCHAIN	5.149108722	0.841	0.009	0	0
44	IGHA1	4.962746319	0.311	0.009	0	0
44	IGHG4	4.480336182	0.86	0.007	0	0
44	IGHG2	4.087463095	0.787	0.001	0	0
44	IGHM	3.887047528	0.476	0.006	0	0
44	MZB1	2.428646243	0.982	0.003	0	0
44	CD79A	2.373515533	0.896	0.008	0	0
44	DERL3	1.933076481	0.963	0.004	0	0
44	IGHGP	1.438219899	0.543	0	0	0
44	CD27	1.264651233	0.841	0.01	0	0
44	LY9	0.894689039	0.591	0.01	0	0
44	SPAG4	0.860294839	0.707	0.003	0	0
44	IGLV6-57	0.810662758	0.463	0	0	0
44	EVI2B	0.693496626	0.665	0.043	0	0
44	CYTIP	0.939156948	0.756	0.061	2.12E-293	5.06E-289
44	ANKRD28	1.099514533	0.805	0.108	9.38E-199	2.23E-194
44	FKBP11	1.476041105	0.902	0.158	6.18E-198	1.47E-193
44	SEC11C	1.316942721	0.89	0.153	1.15E-194	2.73E-190
44	PDE4B	0.751843054	0.671	0.072	2.50E-194	5.95E-190
44	PIM2	1.058167863	0.726	0.097	6.65E-181	1.58E-176
44	CYBA	2.277767658	1	0.339	4.01E-147	9.56E-143
44	ISG20	0.795567193	0.689	0.098	1.06E-146	2.52E-142
44	SERPINB9	0.760623314	0.628	0.086	1.40E-135	3.33E-131
44	AL121944.1	0.873818565	0.598	0.085	1.49E-131	3.55E-127
44	SDF2L1	0.909662924	0.805	0.194	7.93E-109	1.89E-104
44	SSR4	1.964042413	0.988	0.737	1.35E-108	3.21E-104

44	CXCR4	0.958703646	0.634	0.101	5.74E-108	1.37E-103
44	HERPUD1	2.306042038	0.976	0.676	2.03E-99	4.83E-95
44	TNFRSF18	0.679075642	0.72	0.155	3.49E-95	8.30E-91
44	ITM2C	0.868938872	0.695	0.152	5.04E-92	1.20E-87
44	DNAJB9	1.011743693	0.841	0.273	4.96E-89	1.18E-84
44	DUSP5	1.430905148	0.732	0.2	1.34E-86	3.19E-82
44	PRDX4	0.862241227	0.878	0.292	9.12E-86	2.17E-81
44	XBP1	1.268521656	0.97	0.504	8.10E-85	1.93E-80
44	ERLEC1	0.688920801	0.689	0.178	2.98E-78	7.10E-74
44	CYTOR	0.867092306	0.72	0.197	4.38E-72	1.04E-67
44	RGS1	0.91110704	0.372	0.056	1.24E-68	2.95E-64
44	SPCS2	0.747965999	0.902	0.54	1.30E-57	3.09E-53
44	PELI1	0.784713127	0.646	0.2	1.14E-56	2.71E-52
44	RGCC	0.902628716	0.72	0.238	2.74E-51	6.51E-47
44	BIRC3	0.774443152	0.561	0.173	2.14E-42	5.10E-38
44	ERN1	0.938340243	0.378	0.089	8.85E-42	2.11E-37
44	TSC22D3	1.017337507	0.768	0.437	2.19E-36	5.21E-32
44	SAT1	1.20442031	0.909	0.793	5.84E-26	1.39E-21
44	DDIT4	0.885893036	0.707	0.409	2.27E-25	5.40E-21
45	HSPA6	2.643212532	1	0.135	3.22E-178	7.66E-174
45	KRT15	1.61781985	0.95	0.187	8.08E-97	1.92E-92
45	COL17A1	1.032243087	0.861	0.154	1.07E-87	2.55E-83
45	SYT8	0.728791038	0.604	0.098	1.94E-66	4.62E-62
45	S100A2	1.060597868	1	0.388	1.91E-53	4.55E-49
45	HSPA1A	1.482191853	1	0.932	2.12E-53	5.05E-49
45	ATF3	1.553422991	1	0.559	3.38E-53	8.04E-49
45	HSPA1B	1.447599329	1	0.871	5.78E-52	1.38E-47
45	KRT5	1.35479513	1	0.497	9.85E-50	2.34E-45
45	KRT14	1.632202323	1	0.675	4.00E-49	9.53E-45
45	JUN	1.40587256	1	0.861	1.62E-47	3.87E-43
45	DST	1.020424401	0.911	0.335	3.23E-46	7.70E-42
45	DNAJB1	1.295068714	1	0.846	6.04E-46	1.44E-41
45	HSPB1	1.196986473	1	0.971	1.56E-44	3.70E-40
45	HSP90AA1	1.123930174	1	0.971	5.02E-42	1.20E-37
45	SOX15	0.7505537	0.851	0.278	1.05E-41	2.50E-37
45	UBC	0.972208369	1	0.992	1.30E-41	3.11E-37
45	DNAJB4	0.832045963	0.762	0.246	2.41E-40	5.74E-36
45	ZFAND2A	0.972081221	0.713	0.227	1.03E-38	2.45E-34
45	FOS	1.395012665	0.97	0.788	2.47E-38	5.88E-34
45	HSPH1	1.142101975	0.921	0.542	2.71E-37	6.45E-33
45	AC020916.1	0.717274029	0.752	0.251	8.24E-37	1.96E-32
45	DNAJA1	1.077022414	1	0.83	4.98E-35	1.19E-30
45	EGR1	1.202314294	0.911	0.605	1.21E-34	2.87E-30
45	TOB1	0.898265555	0.861	0.443	1.66E-33	3.94E-29
45	SERPINH1	1.259920241	0.891	0.476	1.93E-33	4.60E-29
45	ANKRD37	0.858163527	0.594	0.175	9.00E-33	2.14E-28
45	IFRD1	0.80767752	0.842	0.366	7.19E-32	1.71E-27
45	FOSB	1.015265117	0.941	0.659	1.71E-31	4.08E-27
45	HSPA8	0.926230381	1	0.932	2.34E-30	5.57E-26
45	PMAIP1	0.716274505	0.772	0.294	1.30E-29	3.09E-25
45	ZFP36	0.916415781	1	0.898	6.94E-29	1.65E-24
45	ARL4A	0.801237864	0.733	0.297	5.77E-27	1.37E-22
45	RND3	0.818050209	0.792	0.388	1.09E-26	2.59E-22
45	TRA2B	0.709565053	0.861	0.526	4.88E-26	1.16E-21
45	DUSP1	1.287165511	0.931	0.842	4.09E-25	9.75E-21
45	IER2	0.776329399	0.98	0.81	4.68E-25	1.11E-20
45	SERTAD1	0.713921611	0.891	0.529	8.35E-25	1.99E-20
45	BAG3	0.821662963	0.832	0.47	2.81E-24	6.69E-20
45	CYR61	1.322130676	0.832	0.526	2.68E-23	6.38E-19
45	NR4A1	0.881685195	0.832	0.494	3.42E-23	8.14E-19
45	MYC	1.027966036	0.931	0.704	2.82E-22	6.71E-18
45	SLC38A2	0.753974207	0.901	0.689	1.77E-21	4.21E-17
45	HES1	1.065892592	0.861	0.6	7.99E-21	1.90E-16
45	INTS6	0.705595418	0.802	0.483	7.77E-19	1.85E-14

45	BTG2	0.813114775	0.832	0.565	1.02E-18	2.43E-14
45	SGK1	0.718607101	0.683	0.361	1.65E-14	3.93E-10
45	ANXA1	0.762671019	0.97	0.869	5.50E-13	1.31E-08
45	UBB	0.774253393	0.911	0.97	1.61E-11	3.82E-07
45	CRYAB	0.750858904	0.653	0.448	1.51E-08	0.00035879
46	MPZ	4.226660735	1	0.009	0	0
46	S100B	2.39034972	0.941	0.024	0	0
46	PMP2	1.748414652	0.662	0.005	0	0
46	MIA	1.370275558	0.691	0.018	0	0
46	MLIP	1.369169082	0.706	0.006	0	0
46	BCAS1	1.292370784	0.676	0.004	0	0
46	MT3	1.290437831	0.632	0.002	0	0
46	KIF19	1.032377853	0.544	0.005	0	0
46	NCMAP	0.978241902	0.588	0.001	0	0
46	AATK	0.925451542	0.559	0.005	0	0
46	PLEKHB1	0.88330954	0.471	0.009	0	0
46	CLDN19	0.829209593	0.485	0.001	0	0
46	SOX2	1.204197762	0.471	0.01	5.20E-298	1.24E-293
46	PRX	2.156219003	0.897	0.046	8.86E-263	2.11E-258
46	MAL	0.920729132	0.515	0.015	1.23E-238	2.93E-234
46	FGFBP2	1.240301667	0.676	0.027	2.30E-236	5.48E-232
46	PLP1	2.173794942	0.853	0.062	3.17E-178	7.55E-174
46	MBP	3.155745765	0.956	0.118	6.96E-129	1.66E-124
46	GPM6B	1.640670513	0.912	0.103	2.56E-123	6.10E-119
46	SEMA3B	1.091043436	0.632	0.047	1.83E-120	4.36E-116
46	LPL	0.865942907	0.5	0.035	1.89E-98	4.50E-94
46	GLDN	1.185749909	0.603	0.058	6.21E-90	1.48E-85
46	PLLP	1.345460519	0.75	0.101	3.31E-85	7.88E-81
46	FXYD6	1.216061688	0.647	0.071	8.61E-85	2.05E-80
46	SECISBP2L	1.229609789	0.676	0.083	1.08E-81	2.57E-77
46	PLEKHA4	1.507437196	0.706	0.122	3.86E-62	9.18E-58
46	PMP22	3.042025242	1	0.379	1.58E-59	3.77E-55
46	GATM	1.498594734	0.779	0.16	6.07E-59	1.44E-54
46	SVIP	1.170107284	0.721	0.136	5.98E-57	1.42E-52
46	CNP	1.252507145	0.735	0.16	4.41E-52	1.05E-47
46	CRYAB	2.215443686	1	0.447	1.22E-49	2.91E-45
46	ITM2C	1.142733442	0.691	0.153	5.23E-45	1.24E-40
46	PLA2G16	1.057896037	0.603	0.121	2.58E-42	6.14E-38
46	LIMCH1	0.994794896	0.559	0.103	5.11E-42	1.22E-37
46	TSC22D4	1.346582838	0.706	0.193	3.41E-40	8.11E-36
46	RHOBTB3	0.878437166	0.559	0.137	2.83E-30	6.74E-26
46	PEBP1	0.973403283	1	0.823	3.91E-28	9.30E-24
46	CD9	1.291361402	1	0.854	5.62E-28	1.34E-23
46	TAX1BP3	1.086394413	0.794	0.363	5.90E-27	1.40E-22
46	SPARC	0.868766388	1	0.6	2.03E-25	4.83E-21
46	RGCC	0.972020019	0.706	0.239	3.50E-25	8.34E-21
46	CALM2	0.88044374	1	0.958	7.42E-24	1.77E-19
46	VIM	1.02095201	1	0.714	6.09E-22	1.45E-17
46	FTH1	0.837653446	1	0.952	2.29E-21	5.44E-17
46	TUBA1A	0.896038179	0.985	0.676	3.33E-21	7.93E-17
46	FXYD1	0.82571262	0.662	0.248	3.66E-21	8.71E-17
46	SMTN	0.821648311	0.588	0.214	1.08E-20	2.57E-16
46	DYNLRB1	0.900111751	0.794	0.485	2.35E-18	5.59E-14
46	CUEDC2	1.056013495	0.529	0.203	9.28E-18	2.21E-13
46	RCAN1	1.098178081	0.368	0.141	2.10E-09	5.00E-05
47	RBP4	2.180682672	0.82	0.009	0	0
47	CIDEC	1.986512352	0.738	0.002	0	0
47	GPD1	1.867394656	0.689	0.002	0	0
47	PLIN1	1.856073022	0.721	0.001	0	0
47	PLIN4	1.778787563	0.607	0.004	0	0
47	THRSP	1.394872064	0.492	0.001	0	0
47	ADIPOQ	1.326813916	0.475	0	0	0
47	GPAM	1.284283997	0.492	0.011	5.64E-275	1.34E-270
47	PPP1R1A	0.968262833	0.492	0.011	6.22E-273	1.48E-268

47	LIPE	1.306692129	0.492	0.014	9.66E-220	2.30E-215
47	AQP7	0.893934888	0.361	0.01	3.64E-159	8.66E-155
47	SCD	1.853945858	0.459	0.019	2.82E-141	6.70E-137
47	G0S2	2.420391726	0.951	0.093	1.14E-130	2.72E-126
47	S100B	1.230202633	0.492	0.024	2.36E-123	5.63E-119
47	FABP4	2.418266898	1	0.14	1.64E-99	3.91E-95
47	DGAT2	1.588544918	0.525	0.036	9.54E-99	2.27E-94
47	LPL	1.233904549	0.459	0.035	6.58E-75	1.57E-70
47	MGST1	2.142174432	0.787	0.135	3.12E-65	7.42E-61
47	PLA2G16	1.585452772	0.705	0.121	1.03E-56	2.46E-52
47	CD36	1.518678318	0.623	0.085	1.47E-54	3.50E-50
47	ADH1B	1.372138654	0.639	0.121	4.40E-40	1.05E-35
47	AKR1C2	1.322127489	0.557	0.111	1.85E-35	4.41E-31
47	PNPLA2	1.745818544	0.689	0.204	5.11E-33	1.22E-28
47	HSPB6	0.824138151	0.459	0.078	5.31E-32	1.26E-27
47	AKR1C1	1.184630778	0.541	0.112	6.69E-32	1.59E-27
47	AGPAT2	1.574916737	0.672	0.201	1.29E-31	3.08E-27
47	CYB5A	1.311588369	0.934	0.434	2.18E-30	5.20E-26
47	CRYAB	1.658248639	0.984	0.447	9.63E-30	2.29E-25
47	ADIRF	1.422668262	1	0.635	7.03E-28	1.67E-23
47	GPX4	1.340977573	1	0.835	1.01E-26	2.40E-22
47	RARRES2	1.328945062	0.656	0.199	2.13E-26	5.07E-22
47	FASN	1.268397544	0.361	0.061	9.52E-26	2.27E-21
47	LGALS1	1.009280301	1	0.674	5.16E-21	1.23E-16
47	ALDH2	1.044710984	0.885	0.425	3.13E-20	7.45E-16
47	ACSL1	0.890952984	0.41	0.106	4.72E-18	1.12E-13
47	SNCG	0.941542669	0.492	0.143	2.05E-17	4.87E-13
47	FTL	0.91599389	1	0.971	5.02E-17	1.20E-12
47	ELMOD3	0.817363678	0.279	0.056	1.34E-15	3.18E-11
47	SLC25A1	0.766677652	0.393	0.117	7.56E-15	1.80E-10
47	FHL1	1.025278319	0.607	0.266	1.21E-14	2.87E-10
47	MT-ND4	0.780716374	1	0.995	1.72E-12	4.10E-08
47	MT-ND3	0.982621805	1	0.993	3.57E-12	8.50E-08
47	MGST3	0.811932156	1	0.756	1.09E-11	2.59E-07
47	MT-ND2	0.918399556	1	0.995	6.88E-11	1.64E-06
47	MDH1	1.222555986	0.557	0.336	1.40E-10	3.33E-06
47	CAV2	0.831440339	0.557	0.327	2.78E-10	6.62E-06
47	MT-CYB	0.761478882	1	0.995	2.48E-09	5.90E-05
47	AKR1C3	0.78362187	0.361	0.148	3.91E-08	0.000930173
47	LDHB	1.046826568	0.492	0.344	4.05E-06	0.09645537
47	ASP	0.830479467	0.377	0.236	3.79E-05	0.900944089
48	LOR	7.184271559	1	0.017	0	0
48	FLG	5.70314629	1	0.016	0	0
48	LCE1B	5.44717131	0.792	0.004	0	0
48	LCE2B	5.336523023	0.917	0.002	0	0
48	C1orf68	5.200627537	1	0.016	0	0
48	SPRR2G	5.126262139	0.792	0.004	0	0
48	CRCT1	5.057580629	1	0.003	0	0
48	ASPRV1	5.049936943	1	0.007	0	0
48	CST6	5.034479043	1	0.013	0	0
48	FLG2	4.729901338	1	0.003	0	0
48	LCE2C	4.719254981	0.792	0.001	0	0
48	SPRR2E	4.718538008	1	0.009	0	0
48	LCE1E	4.716047683	0.75	0.002	0	0
48	LCE2D	4.42470632	0.833	0.001	0	0
48	PSORS1C2	4.091830801	1	0.004	0	0
48	LCE1A	4.066620924	0.708	0	0	0
48	LCE2A	4.040805821	0.708	0.001	0	0
48	KPRP	3.977919637	0.958	0.002	0	0
48	IL37	3.96775823	0.958	0.001	0	0
48	LCE5A	3.846790972	0.5	0.001	0	0
48	LCE6A	3.635404555	0.917	0.001	0	0
48	SPRR5	3.136592883	0.833	0.001	0	0
48	CDSN	3.125778914	1	0.004	0	0

48	LCE3D	2.943941489	0.875	0.001	0	0
48	NCCRP1	2.807406945	0.958	0.015	0	0
48	WFDC12	2.690727348	0.792	0	0	0
48	LINC00302	2.67109308	0.792	0	0	0
48	AL365226.2	2.652709324	0.75	0.003	0	0
48	PSAPL1	2.429463138	1	0.001	0	0
48	BTC	2.422263327	0.958	0.008	0	0
48	SPRR2B	2.334859181	0.542	0	0	0
48	ARG1	2.310889166	0.833	0.001	0	0
48	KLK5	3.440467738	1	0.023	1.01E-227	2.40E-223
48	LCE1C	5.888259076	0.833	0.017	1.39E-213	3.30E-209
48	FAM25A	4.314492311	1	0.029	2.62E-184	6.24E-180
48	C5orf46	4.14798495	1	0.029	1.10E-182	2.61E-178
48	AZGP1	4.010573732	1	0.03	2.16E-180	5.13E-176
48	CYSRT1	2.363732767	0.958	0.028	8.00E-175	1.90E-170
48	KRT23	3.373710833	1	0.032	2.48E-165	5.90E-161
48	CTSV	2.521978968	0.917	0.057	2.67E-82	6.35E-78
48	CNFN	2.856105506	0.833	0.049	2.89E-77	6.88E-73
48	SPINK5	2.337342699	0.958	0.151	1.03E-36	2.44E-32
48	GLRX	2.820294499	0.958	0.16	1.61E-36	3.83E-32
48	CALML5	3.554873655	0.958	0.178	2.44E-31	5.80E-27
48	CTNNBIP1	3.291630802	1	0.281	9.16E-27	2.18E-22
48	SBSN	3.649505228	1	0.296	9.50E-26	2.26E-21
48	CSTA	2.664230127	0.958	0.265	1.15E-23	2.73E-19
48	BNIP3L	2.273515132	0.958	0.288	2.67E-23	6.36E-19
48	KRTDAP	2.971909471	1	0.445	8.48E-20	2.02E-15
48	HOPX	2.449168803	0.833	0.392	6.59E-11	1.57E-06